



Blueprint For Maryland's Future

Stakeholder Workgroup – February 22, 2024

Dr. Melissa Lembo Whisted
Department of Academic Services



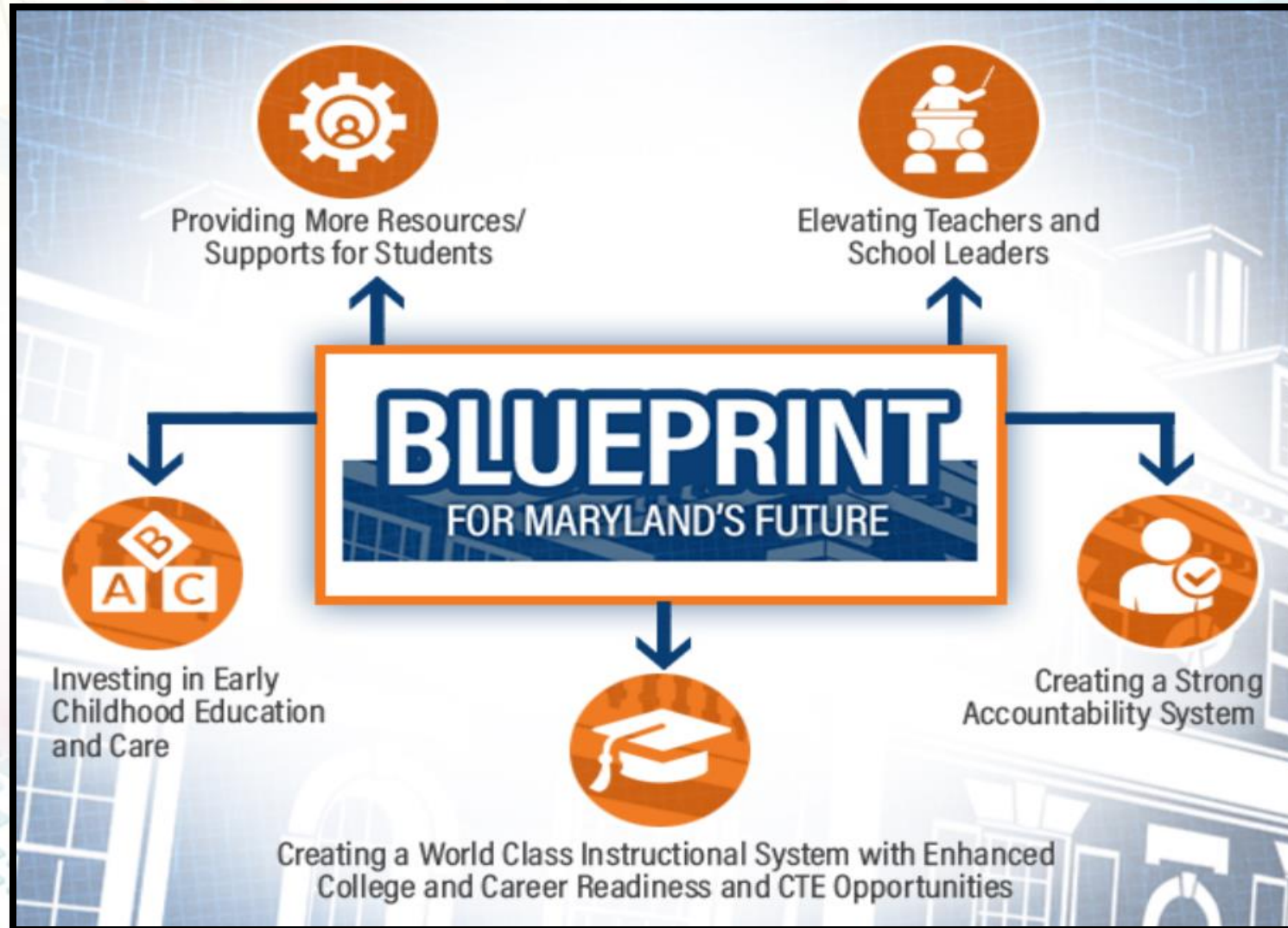
▶ ***Engage. Empower. Excel.***

Baltimore County Public Schools

Focus Areas



Blueprint Pillars



Where to Find the Plan



Baltimore County Public Schools / About Us / Blueprint for Maryland's Future / [Blueprint Plan](#)

BLUEPRINT PLAN

BLUEPRINT PLAN

[Blueprint Implementation Plan](#)

[Blueprint Executive Summary and Plan](#)

[Arabic](#) | [Chinese](#) | [Dari](#) | [French](#) | [Nepali](#) | [Spanish](#) | [Urdu](#) | [Uzbek](#) | [Vietnamese](#)

[AIB Blueprint Initial Comprehensive Implementation Plan](#)

[Spanish translated](#)

- [Approved LEA Plan Feedback – Baltimore County](#)
- [MSDE Memo – Round One](#)
- [MSDE Feedback – Baltimore County](#)
- [AIB Feedback on LEA Plan – Baltimore County](#)
- [2023 Draft Career Counseling MOU – Baltimore County](#)

2024 Implementation Plan



Submission Updates

- Part I- due March 15, 2024
- Part II- due May 1, 2024
- Blueprint Teams by Pillar, Authors, Reviewers
- Drafting complete by March 15, 2024
- Reviewing complete by March 23, 2024
- Vetting and Finalization by April 15, 2024
- Cabinet review on April 22, 2024

Introduction Components



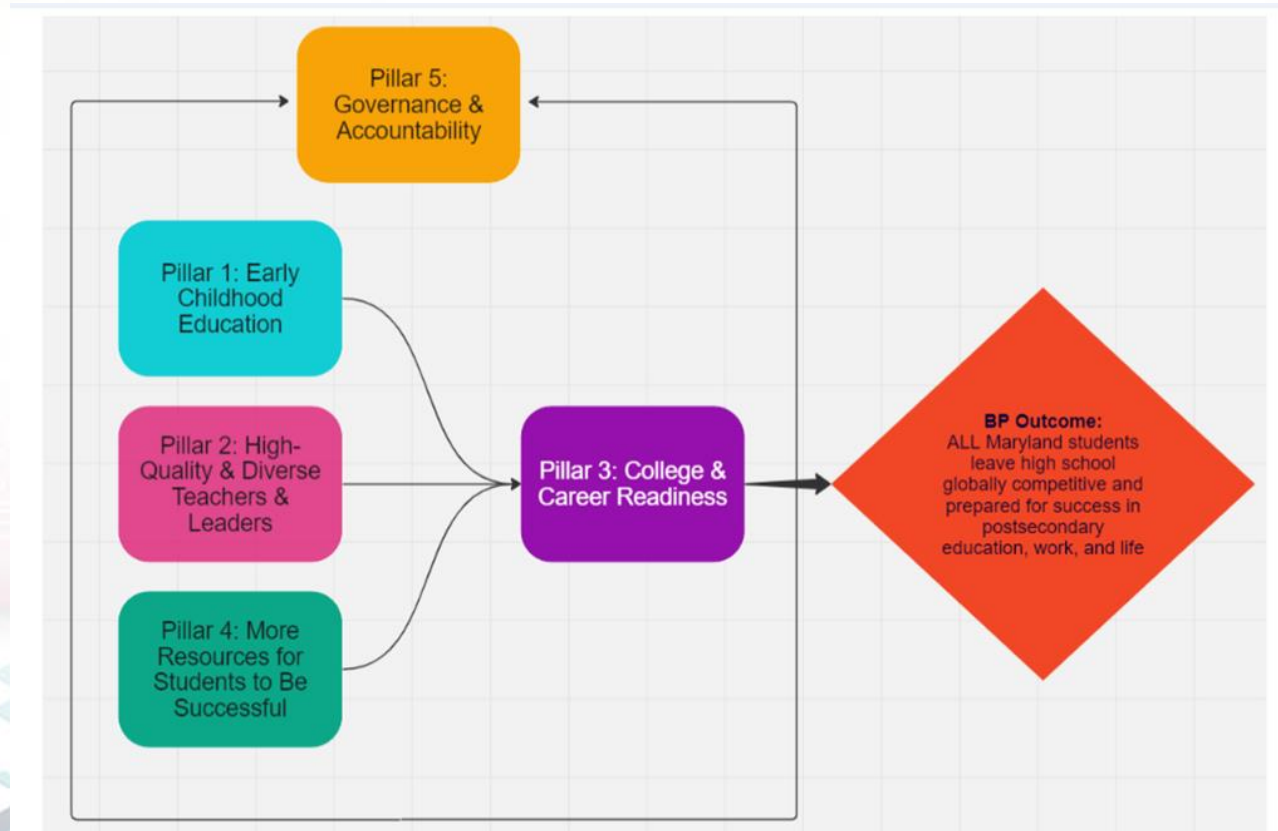
Meeting Blueprint's Expected Outcomes

- Vision Alignment to Blueprint Legislation
- Communication to All Stakeholders
- Systemic Changes for Blueprint Implementation
- Three Greatest Challenges
 - Expanding Early Childhood
 - Supporting Students Meeting CCR
 - Recruiting and Hiring Staff in Critical Need Areas
Representative of Students in BCPS
- Monitor Progress of Overcoming Challenges

Blueprint Planning Reflection



How will students graduating from high school in 2033 be better prepared for college, career and life?



Early Childhood Education



- Full day Prekindergarten Expansion (2024-2025)
- Partnership with Private Providers
- Expansion of Judy Centers



2024 – 2025 Expansion Schools



New Full Day Sessions **Added** in 2024-25

New Full Day Preschool 3's			New Full Day Prekindergarten		
8 schools			23 schools		
9 sessions			41 sessions		
FULL DAY			FULL DAY		
School Name	Preschool Classroom		School Name	Prekindergarten Classroom	
1 Bedford	1		1 Arbutus	1	
2 Joppa View	2		2 Bear Creek	2	
3 Middlesex	1		3 Bedford	2	
4 Sandalwood	1		4 Catonsville	2	
5 Shady Spring	1		5 Chadwick	2	
6 Summit Park	1		6 Chapel Hill	1	
7 Victory Villa	1		7 Charlesmont	2	
8 Wellwood	1		8 Deer Park	1	
8 schools-9 sessions			9 Elmwood	2	
			10 Essex	2	
			11 Featherbed Lane	2	
			12 Hebbville	2	
			13 Hillcrest	2	
			14 Mars Estates	2	
			15 Middleborough	1	
			16 Milbrook	1	
			17 Red House Run	2	
			18 Summitt Park	2	
			19 Sussex	2	
			20 Timber Grove	2	
			21 Wellwood Int'l	2	
			22 Woodholme	2	
			23 Woodmoor	2	

2024-2025 Full Day Early Childhood Programs



2024-25 Full Day Preschool 3's

8 schools

9 sessions

School Name		FULL DAY Preschool Classroom
1	Bedford	1
2	Joppa View	2
3	Middlesex	1
4	Sandalwood	1
5	Shady Spring	1
6	Summit Park	1
7	Victory Villa	1
8	Wellwood	1

8 schools-9 sessions

2024-25 Full Day Prekindergarten

50 schools

90 sessions

School Name		FULL DAY Prekindergarten Classroom
1	Arbutus	2
2	Bear Creek	2
3	Bedford	2
4	Berkshire	2
5	Catonsville	2
6	Chadwick	2
7	Chapel Hill	1
8	Charlesmont	2
9	Chase	2
10	Chesapeake Terrace	1
11	Church Lane	1
12	Deer Park	1
13	Dogwood	2
14	Elmwood	2
15	Essex	2
16	Franklin	1
17	Featherbed Lane	2
18	Glenmar	2
19	Halstead	2
20	Harford Hills	1
21	Hawthorne	5
22	Hebbville	2
23	Hillcrest	2
24	Joppa View	1
25	Lansdowne	3

26	Lyons Mill	1
27	Mars Estates	2
28	Martin Boulevard	1
29	McCormick	1
30	Middleborough	1
31	Middlesex	2
32	Milbrook	1
33	Oliver Beach	1
34	Perry Hall	2
35	Powhatan	1
36	Red House Run	2
37	Riverview	2
38	Rossville	2
39	Sandalwood	2
40	Sandy Plains	2
41	Seneca	2
42	Shady Spring	2
43	Summitt Park	2
44	Sussex	2
45	Timber Grove	2
46	Victory Villa	2
47	Wellwood Int'l	2
48	Winfield	2
49	Woodholme	2
50	Woodmoor	2

50 schools sessions 90

High Quality and Diverse Teachers and Leaders



- Pillar 2 Blueprint Plan Team
- NBCT TABCO Meeting(s)
- Career Ladder Workgroup
- Career Ladder Development Board



College and Career Readiness



- CCR standard has updated approved criteria
 - Interim standard: MCAP ELA 10 (score of 3 or 4); MCAP Alg 1, Alg 2, or Geom (score of 3 or 4) OR SAT Math 520 or higher
 - New standard: GPA of 3.0 or higher; Alg 1 final grade of A, B, or C
- Individualized CCR Plans
 - Teacher assigned
 - Meeting with family
 - Student engages in CCR project or problem-based instruction
- CCR Pathways
 - Advanced Placement (AP) or International Baccalaureate (IB) programs
 - Dual Enrollment or early college programs
 - Career and Technical Education (CTE) programs

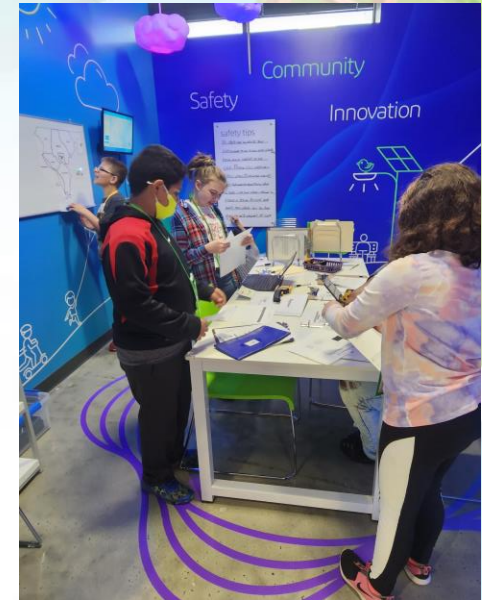


College and Career Readiness



Pillar 3: Career Counseling Program

- Requires individualized Career Advising & Counseling
 - “help the student choose one or more post-CCR pathways, or courses within a post- CCR pathway, that fits with the student’s educational and career goals.”
 - K-12 with a prioritization of non-CCR students.
- Blueprint Funding (not a grant) that should **pass through** to Baltimore County Government.
- MOU between BCPS, Baltimore County Government, CCBC
- All students in grades 5, 7, and 8 will participate in virtual and/or in-person experiences that introduce concepts of financial literacy, entrepreneurship, civics, career exploration and pathways in partnership with Junior Achievement.
- High School based Spring & Summer plans to assess interest and connect career exploration opportunities (field trips, camps, guest speakers) to more students.

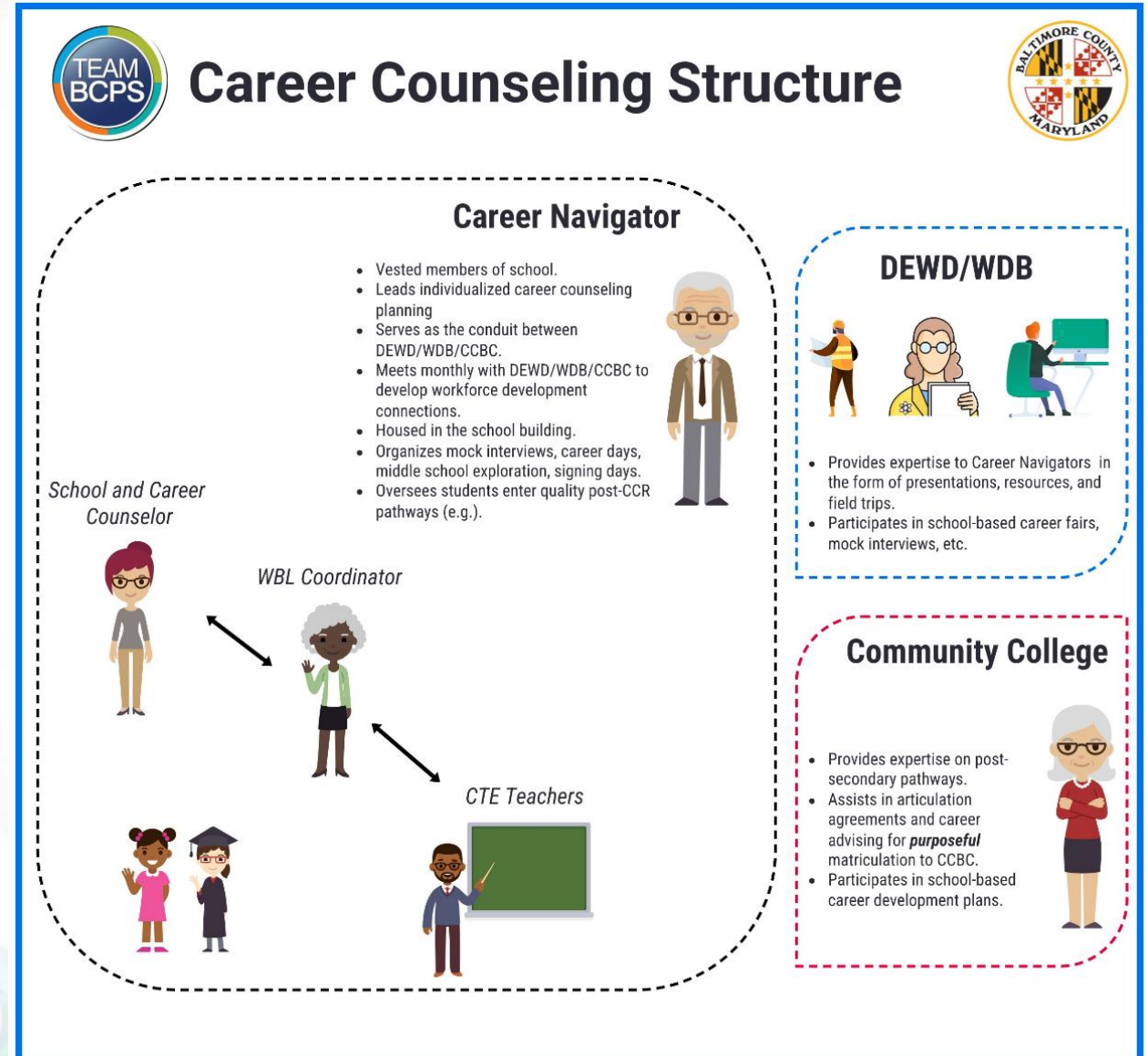


College and Career Readiness



Pillar 3: Career Counseling Program

- **Career Navigator (25 – 1 Per HS)**
 - Ensure all students engage in Career exploration that is meaningful
 - Traitify and 6-Year Planning (with focus on career pathways)
 - Monthly training with County/CCBC
- **Work-Based Learning Coordinator (12 Regional Positions)**
 - 1-3 schools per WBL Coordinator.
 - Responsibility is monitoring students on the job site



More Resources to Ensure All Students are Successful



- English Learners
 - Return Students to home schools
- Special Education
 - Professional learning communities
 - Home school resource alignment
 - Increased content area collaboration
 - Elementary IEP chair facilitators
 - Community resource fairs



More Resources to Ensure All Students are Successful



- Concentration of Poverty
 - Community School 2024-2025 Expansion (31 additional schools)
- Behavioral Health Supports
 - Mental Health Advisory Council (MHAC)-Focus on SHAPE
 - Maryland Consortium for Coordinated Community Supports
 - Expanded Mental Health Partners and Services
 - MOM-Promotion and Prevention

Governance and Accountability



- Overall Stakeholder Engagement
- Blueprint Implementation Planning Committee
 - Pillar Workgroups
- Implementation Plan due
 - March 15 and May 1, 2024
- Structures and Accountability of Plan
 - Expert Review Team visits



Expert Review Team Visits



Parkville High (November)

Lansdowne Middle (December)

Dundalk Middle (January, rescheduled to April)

Eastern Technical High (March)

Pinewood Elementary (March)

Classroom Reviews

- Observations of Teachers

Focus Group Discussions

- Teachers, Students, Parents, Leaders

Interviews with School Leadership

- Principal/Administrator

Future Meetings



- May 16, 2024
 - 4:30 p.m.



Thank You

