

BALTIMORE COUNTY PUBLIC SCHOOLS

DATE: May 22, 2012

TO: **BOARD OF EDUCATION**

FROM: Dr. Joe A. Hairston, Superintendent

SUBJECT: **REPORT ON THE NORTHBAY ENVIRONMENTAL AND
CHARACTER DEVELOPMENT EDUCATION PROGRAM**

ORIGINATOR: Renee A. Foose, Deputy Superintendent

**RESOURCE
PERSON(S):** Roger L. Plunkett, Assistant Superintendent, Curriculum and Instruction
John Quinn, Executive Director, STEM
George Newberry, Director, Office of Science
Lisa Williams, Director, Office of Equity and Cultural Proficiency

INFORMATION

That the Board of Education receives a report on the NorthBay Environmental and Character
Development Education Program

* * * * *

Attachment I – Executive Summary
Attachment II – PowerPoint presentation

NorthBay Environmental and Character Development Education Program Executive Summary

May 22, 2012

The NorthBay Environmental and Character Development Education Program offers students a transdisciplinary 7-day experience emphasizing the exploration of environmental science, character education, and experiential learning opportunities. The NorthBay program supports the Baltimore County *Blueprint for Progress* as well as the Maryland State Department of Education's statutory guidelines related to increasing students' experiences in environmental science. During the FY 11 school year, 12 BCPS schools participated in the NorthBay environmental science program and the purpose of this presentation is to provide: (1) an overview of the initiative, (2) data describing BCPS student participation, (3) benefits of participating in this initiative and, (4) feedback from BCPS school-based administrators engaging in the NorthBay program.



NorthBay Environmental and Character Development Education Program



What is NorthBay?



- ... A Location*
- ... An Experience*
- ... A Curriculum*
- ... A Life-Changing Event*



Aligned to BCPS *Blueprint for Progress*

Performance Indicator 1.1 – c,f,g,k,q,s

Performance Indicator 4.1 – b,j,k

Performance Indicator 5.3 – b

Performance Indicator 6.5 – h



Also aligned with Environmental Literacy Standards and supports the new Maryland Environmental Literacy requirements

Program Outcomes

- Connect student to the environment; get them active
- Reinforce character education
- Bring the integrated curriculum experience to life



Baltimore County Public Schools' Participation in NorthBay

- BCPS schools have been participating since 2006-2007
- Started with a MSDE-funded grant

FY 11 BCPS Participating Schools

- Deep Creek Middle
- Deer Park Middle
- Dundalk Middle
- Golden Ring Middle
- Holabird Middle
- Lansdowne Middle
- Loch Raven Academy
- Middle River Middle
- Old Court Middle
- Stemmers Run Middle
- Southwest Academy
- Windsor Mill Middle

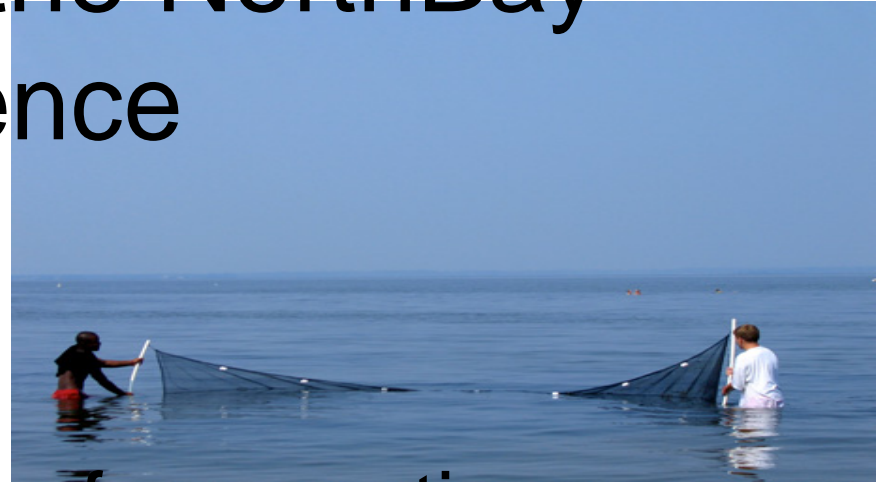
Demographic Descriptors of Participation FY 11



Demographic	Number	Percentages
<i>Total Students</i>	1258	
Male	590	46.9%
Female	668	53.1%
<i>Special</i>		
FARM	768	61.0%
Special Education	126	10.0%
English Language	21	1.6%
<i>Racial Identifiers</i>		
Amr. Indian	7	.5%
Asian	32	2.6%
Black/Afr Amr.	686	54.5%
Hispanic	74	5.9%
White	425	33.8%
Two or More	34	2.7%

The Benefits of the NorthBay Experience

- Connects to outdoors
- Helps build a foundation for an active lifestyle to assist in mitigating the instances of childhood obesity
- Issues of character development abound in contemporary issues in education

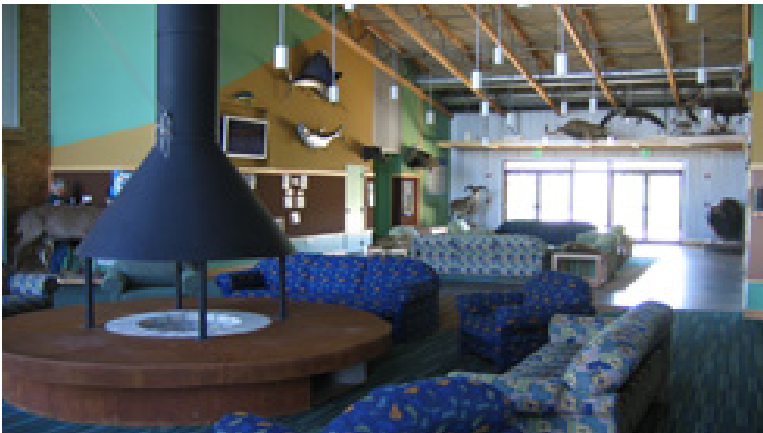


The Benefits of the NorthBay Experience

- Lifelong learning
- Academic growth
- Environmental stewardship
- Appreciation for the Chesapeake Bay, its health, and organisms
- Appreciation for wildlife
- One person making a difference
- “The buck stops with me!”
- NO “Away!”
- Character development
- Personal change starting with the first step
- New outlook
- New insights
- Better habits

The Benefits of the NorthBay Experience

- Increase students' interests in STEM
- Increase BCPS capacity to provide students rigorous, relevant experiences with taught curriculum



NorthBay and Accelerating Student Achievement

- Equity and access challenges
- Opportunity for fun; transdisciplinary, deep and meaningful learning



How NorthBay Provides a Supplemental Experience

- Service learning
- Character education
- Where the state is going with environmental literacy



Let's hear from the students



School Reflections



Next Steps

- Culminate participation for school year FY 12
- Strengthen coordination with schools and Student Support Services in promoting character development
- Provide professional development to assist teachers in embedding the experience in teaching and learning as we transition to Common Core

