

BALTIMORE COUNTY PUBLIC SCHOOLS

DATE: June 10, 2003

TO: BOARD OF EDUCATION

FROM: Dr. J. Hairston, Superintendent

SUBJECT: Relief of Overcrowding – Staff Proposals
Northwest and Southwest Elementary Schools

ORIGINATOR: J. Robert Haines, Deputy Superintendent

**RESOURCE
PERSON(S):** Rita Fromm, Executive Director, Planning and Support Operations

RECOMMENDATION

That the Board of Education receives an update on staff proposals for relief of overcrowding in Northwest and Southwest Area Elementary Schools.

Background Information: The Office of Strategic Planning in cooperation with the Executive Directors of Schools presented plans to the Superintendent to relieve overcrowding in certain elementary schools.

Estimated Operating Funds Fiscal Impact: \$60,000 for FY 2003

Possible Funding Source: Operating Budget

JRH/dd

Final Summary of Recommendations to Relieve Overcrowding In NW and SW Areas



Prepared by the Office of Strategic Planning and Area Executive Directors of Schools



Summary of Recommendations and Rationales – SW Area

RECOMMENDATIONS:

- Relocate Dogwood ES SED program to Winfield ES.
- Annex kindergarten enrollments at Edmondson Heights ES beyond current levels (5 classes) to Westowne ES.
- Implement new education plan and site improvements for Featherbed Lane ES Primary and Intermediate schools.

RATIONALE:

- Provides SED program more space for program delivery. Increases capacity for Dogwood ES.
- Prevents overcrowding at Edmondson Heights ES.
- Unifies Featherbed Lane Primary and Intermediate schools under a single principal. Implements NSF Grant STEM Academy model. Construct parent drop-off loop for improved safety and access.



Summary of Recommendations and Rationales – NW Area

RECOMMENDATIONS:

- Annex selected communities to schools with available space.
- Move New Town ES SED program to Chatsworth.
- Cap enrollment at New Town ES at 901 students.

RATIONALE:

- Communities furthest from New Town ES annexed to nearby schools with significant available classrooms
- Developing communities near New Town ES annexed to Reisterstown ES as a “pre-emptive” cap on new enrollments
- Relocation of New Town ES SED program increases New Town ES capacity with no change to the educational program
- Cap of 901 permits available seats at New Town to be utilized (751 seats in building + 150 relocatable seats = 901)



Why a Cap of 901 Students at New Town ES?

- New town currently has a capacity of $706 + 150$ relocatable seats = 856 available seats
- Moving the SED program results in a gain of 45 seats, raising capacity to $751 + 150$ relocatable seats = 901 available seats
- The identification and annex of impending New Town ES development to Reisterstown ES is, in effect, a “cap” that further limits new enrollments at the school
- Available relocatable seating on school sites is routinely considered as a component of plans relieve overcrowding

Capacity PLUS Consideration of Relocatable Seating

School	Area	Full Day Kdg.	9/30/02 Total Enroll	9/30/02 FTE Enroll	State Capacity	Number Students +/- Capacity	Additional Reloc. Seats	Total Available Seats	Number Students +/- Seats
Bedford	NW		367	367	350	17	0	350	17
Campfield ECLDC	NW	*	318	219	317	-98	100	417	-198
Cedarmere	NW	*	524	507	461	46	50	511	-4
Chatsworth	NW	*	418	418	449	-31	0	449	-31
Church Lane	NW	*	481	471	508	-37	0	508	-37
Deer Park	NW	*	511	495	481	14	50	531	-36
Fort Garrison	NW		457	435	502	-67	0	502	-67
Franklin	NW		485	442	567	-125	0	567	-125
Glyndon	NW		480	440	629	-189	0	629	-189
Hernwood	NW	*	457	449	418	31	50	468	-19
Milbrook	NW		359	359	345	14	100	445	-86
New Town	NW	*	984	970	706	264	150	856	114
Owings Mills	NW	*	721	684	759	-75	0	759	-75
Randallstown	NW	*	374	374	426	-52	0	426	-52
Reisterstown	NW		473	434	514	-80	125	639	-205
Scotts Branch	NW	*	562	562	541	21	50	591	-29
Summit Park	NW		312	286	362	-76	0	362	-76
Timber Grove	NW		631	585	664	-79	0	664	-79
Wellwood	NW	*	517	517	491	26	75	566	-49
Winand	NW	*	588	576	651	-75	50	701	-125
Elementary Totals			10019	9590	10141	-551	800	10941	-1351

* indicates a school with a Full-Day Kindergarten program.

Orange shaded schools are within 90% or higher of their state capacity.

Blue shaded schools are schools less than 90% capacity with available classrooms.



Other Comments on New Town ES

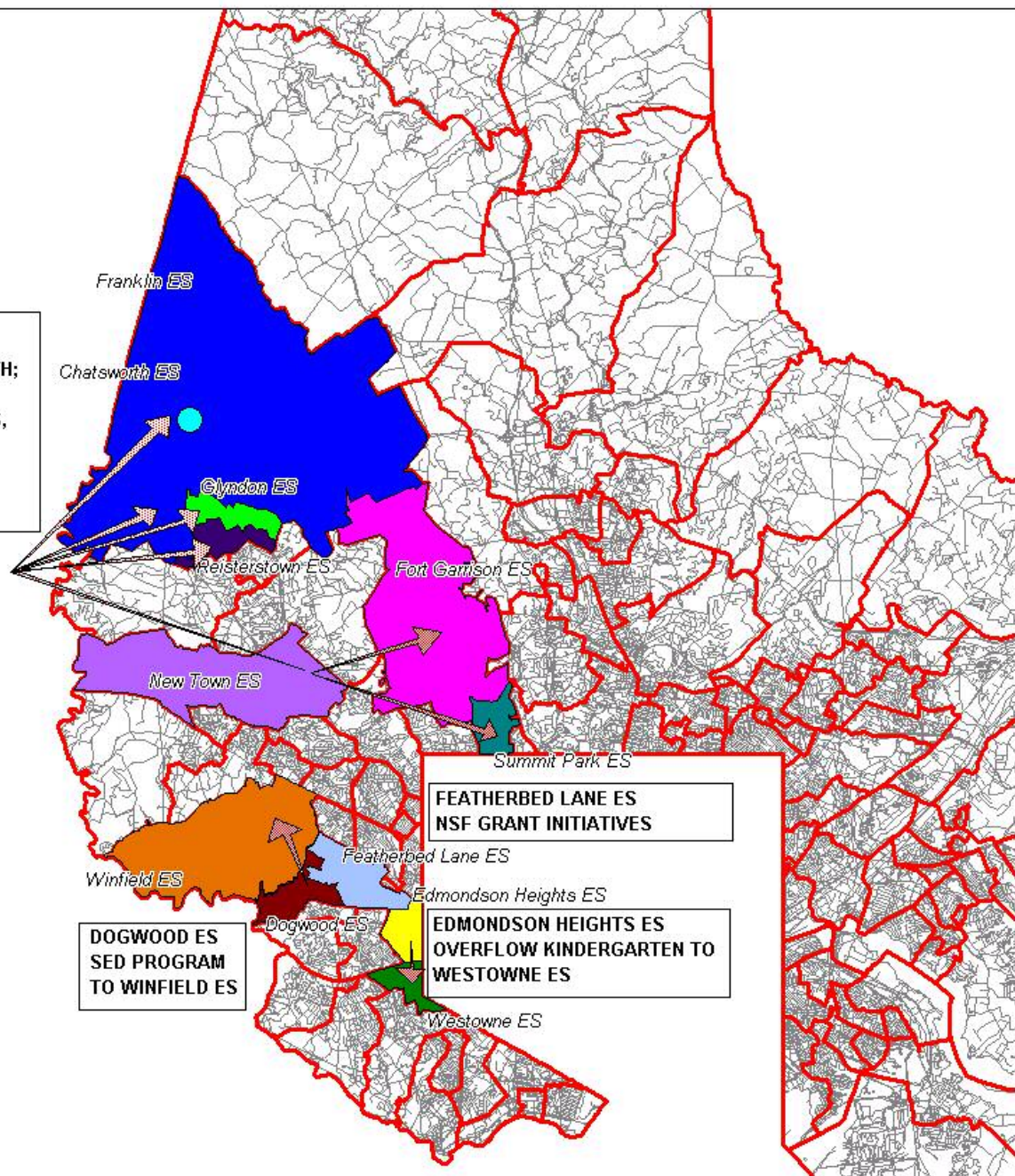
- With the proposed program annexation, New Town ES would gain an art room and a vocal music room, and two full-time teachers who currently “float” would be assigned to these rooms
- The School Improvement Team will adjust cafeteria schedules and allocate space based on the adjusted population
- Final approval has been given by Baltimore County to commence work on improved fields and play areas for New Town ES. Work is scheduled to begin in July 2003
- There is a distinction between New Town ES being “over capacity” and the designated class size for instruction. New Town ES is staffed to the standards of all BCPS schools. For 2002/2003, the student/teacher ratios were as follows:

• Kindergarten	21.7
• Grades 1 and 2	21.5
• Grades 3, 4, and 5	24.0

Recommendations to Relieve Overcrowding for September 30, 2003



NEW TOWN ES SED PROGRAM TO CHATSWORTH; GEOGRAPHIC ANNEX TO FRANKLIN ES, GLYNDON ES, FORT GARRISON ES, AND SUMMIT PARK ES, AND REISTERSTOWN ES



FEATHERBED LANE ES NSF GRANT INITIATIVES

DOGWOOD ES SED PROGRAM TO WINFIELD ES

EDMONDSON HEIGHTS ES OVERFLOW KINDERGARTEN TO WESTOWNE ES



Challenges for Using New Town HS to Relieve New Town ES

- Difficulty of segregating elementary students from high school students due to the integrated design of the high school building, including:
 - Any rooms to be used by elementary students would be on hallways housing high school students' classrooms
 - Lavatories needed to serve elementary school students would have to be shared by high school students and are in areas where high school students would be required to pass
 - The cafeteria is at the opposite end of the building from where elementary classes would most reasonably be located
 - Elementary students would be exiting the building after the regular high school day, when high school students would be likely to interact with them near the building
- Delivery of special area subjects (art, music, physical education) to elementary students housed in the high school could necessitate movement of students or teachers between the school buildings
- Relocatable classrooms housed on the high school site would necessitate elementary school students entering the building and using lavatories on the main hall, interacting with lots of high school student traffic