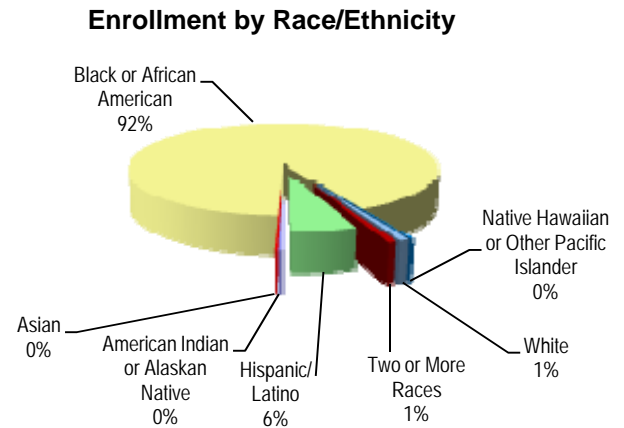


Enrollment and Attendance

| Student Enrollment Sept. 30 | 2006-07 | 2007-08 | 2008-09 | 2009-10 | 2010-11 |
|-----------------------------|---------|---------|---------|---------|---------|
| All Grades | 719 | 687 | 669 | 642 | 634 |
| 06 | 228 | 222 | 214 | 214 | 214 |
| 07 | 236 | 232 | 233 | 198 | 229 |
| 08 | 255 | 233 | 222 | 230 | 191 |



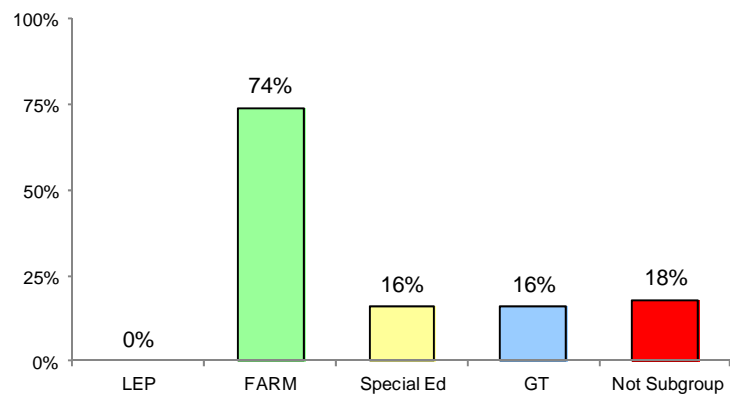
AYP Attendance 2010-2011

| | |
|---|-------|
| All Students | 95.1% |
| American Indian or Alaskan Native | * |
| Asian | * |
| Black or African American | 95.2% |
| Native Hawaiian or Other Pacific Islander | * |
| White | 92.8% |
| Two or More Races | 92.1% |
| Hispanic/Latino | 95.5% |
| Free/Reduced Meals | 94.7% |
| Special Education | 93.5% |
| Limited English Proficiency | * |

Mobility 2010-2011

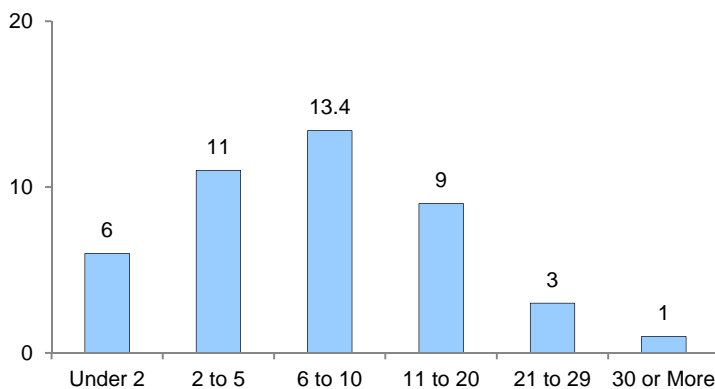
| | |
|--------------|-------|
| % Entry | 18.7% |
| % Withdrawal | 15.2% |

Special Programs

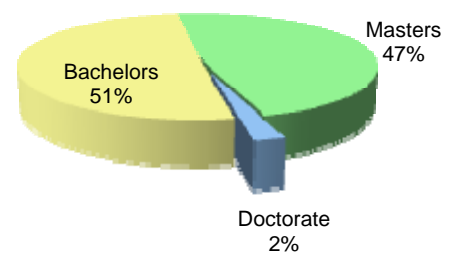


Classroom Teachers Characteristics

Instructional Staff Experience in Years

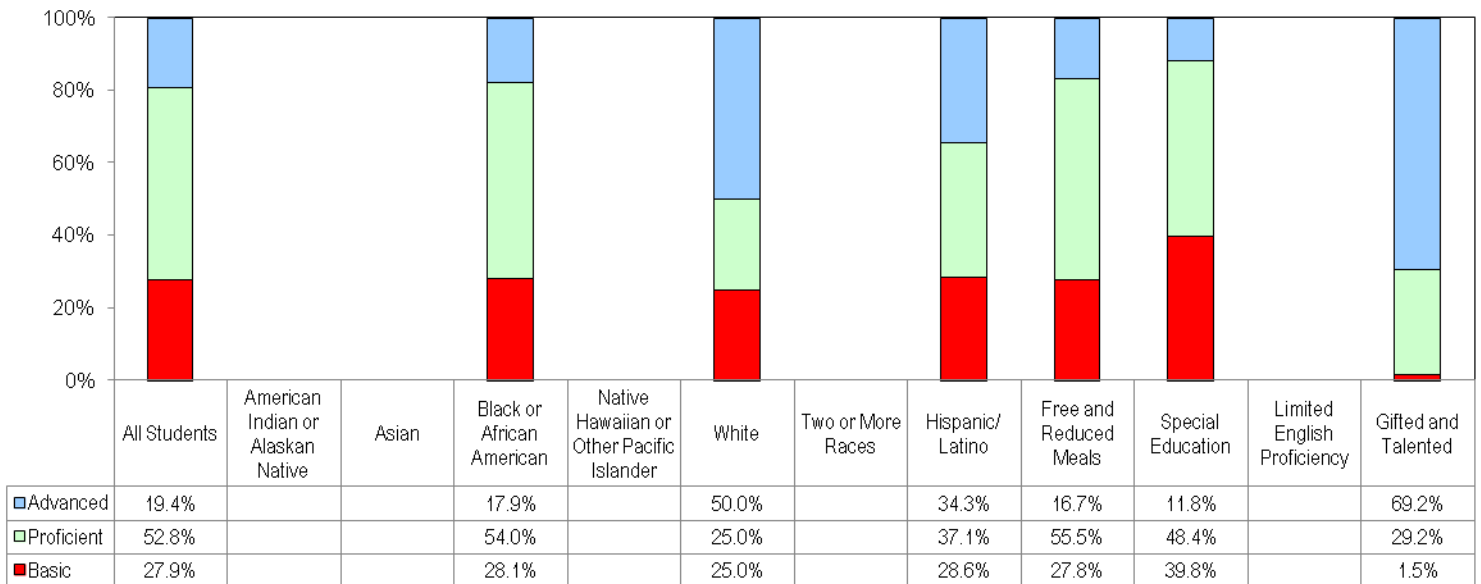


Education of Instructional Staff

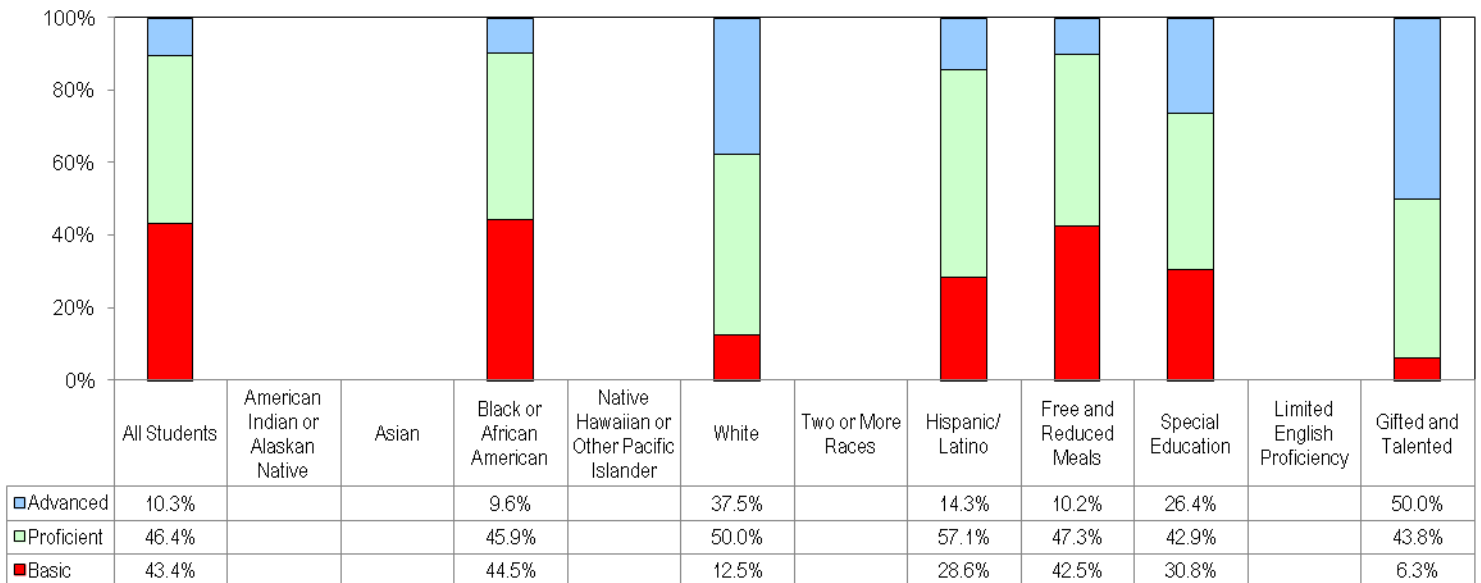


Student Performance

2010-2011 MSA Reading Performance Data



2010-2011 MSA Mathematics Performance Data



Alt-MSA

| | |
|---------------------|--------|
| Alt-MSA Reading | 100.0% |
| Alt-MSA Mathematics | 100.0% |

English Proficiency

| | |
|--|-----|
| ESOL LAS-Links Grades 6 to 8 - Percent Met Exit Criteria | N/A |
|--|-----|

