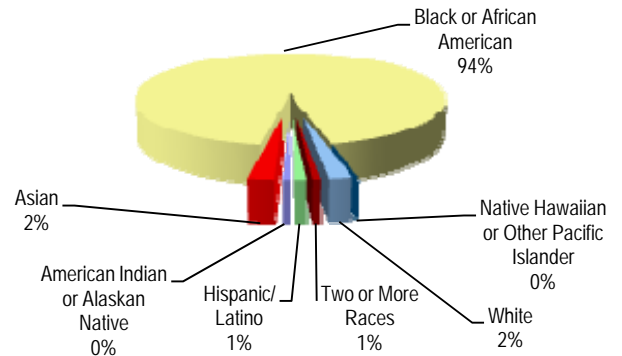


Enrollment and Attendance

Student Enrollment Sept. 30	2006-07	2007-08	2008-09	2009-10	2010-11
All Grades	567	601	618	605	624
06	221	210	201	194	184
07	172	216	208	217	211
08	174	175	209	194	229

Enrollment by Race/Ethnicity



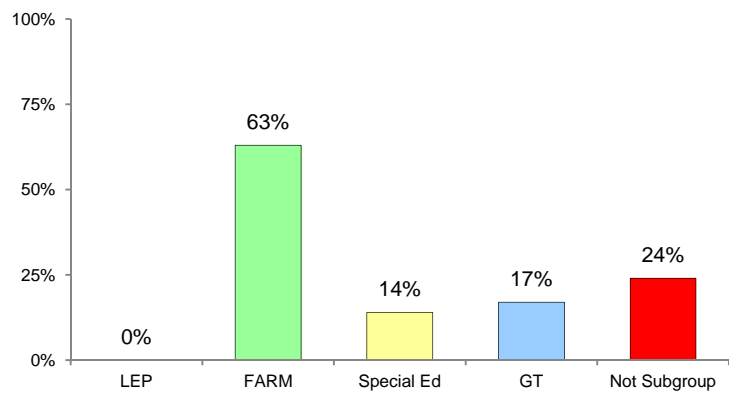
AYP Attendance 2010-2011

All Students	95.4%
American Indian or Alaskan Native	*
Asian	95.1%
Black or African American	95.6%
Native Hawaiian or Other Pacific Islander	N/A
White	94.7%
Two or More Races	83.2%
Hispanic/Latino	95.2%
Free/Reduced Meals	94.7%
Special Education	94.7%
Limited English Proficiency	*

Mobility 2010-2011

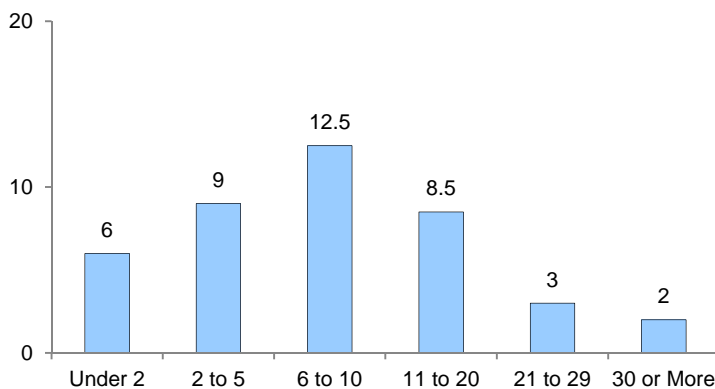
% Entry	14.3%
% Withdrawal	11.3%

Special Programs

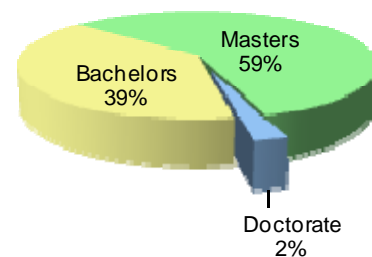


Classroom Teachers Characteristics

Instructional Staff Experience in Years

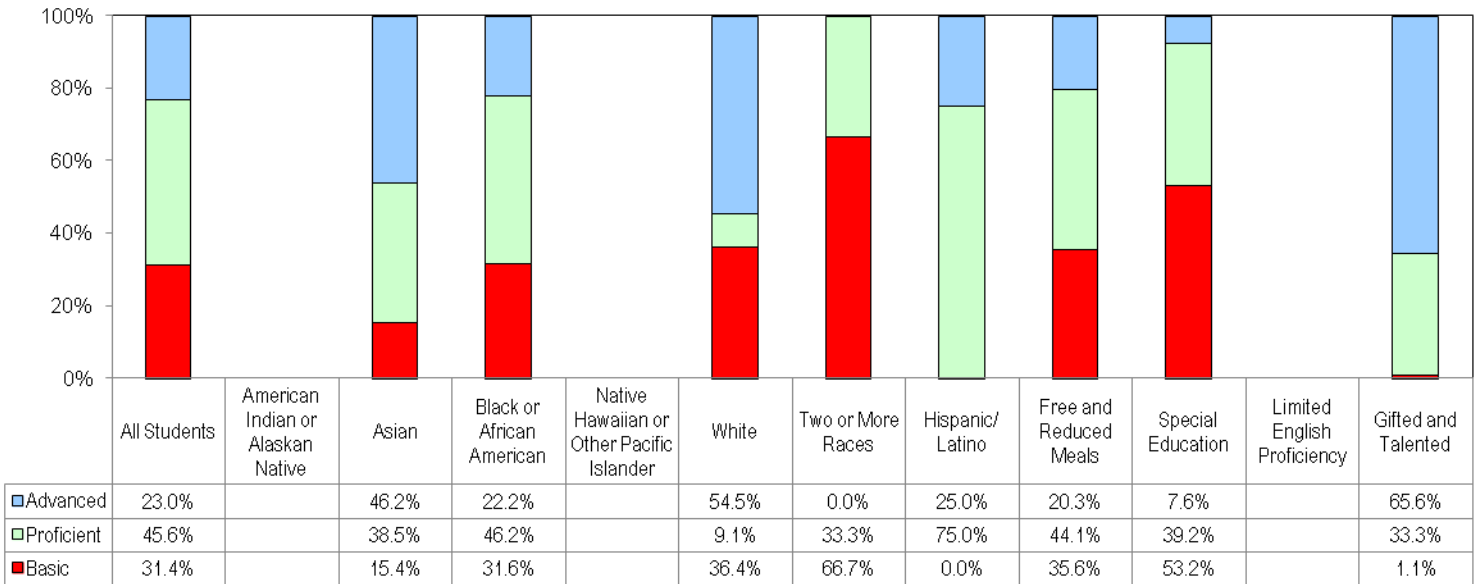


Education of Instructional Staff

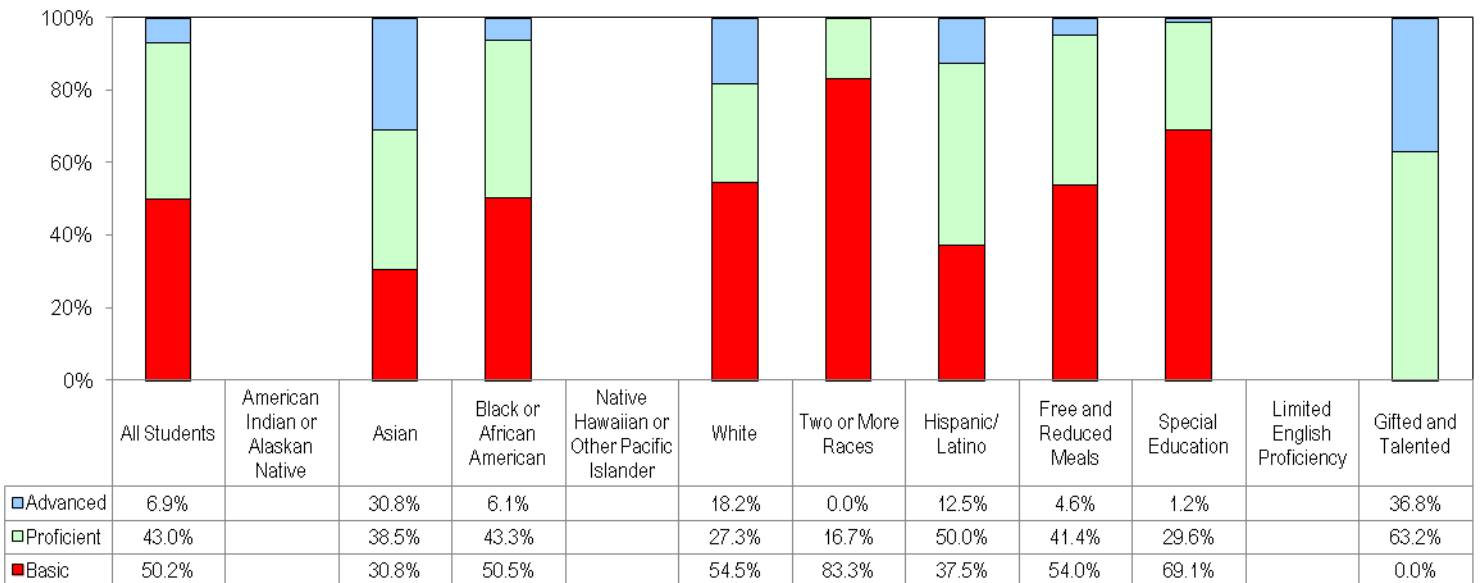


Student Performance

2010-2011 MSA Reading Performance Data



2010-2011 MSA Mathematics Performance Data



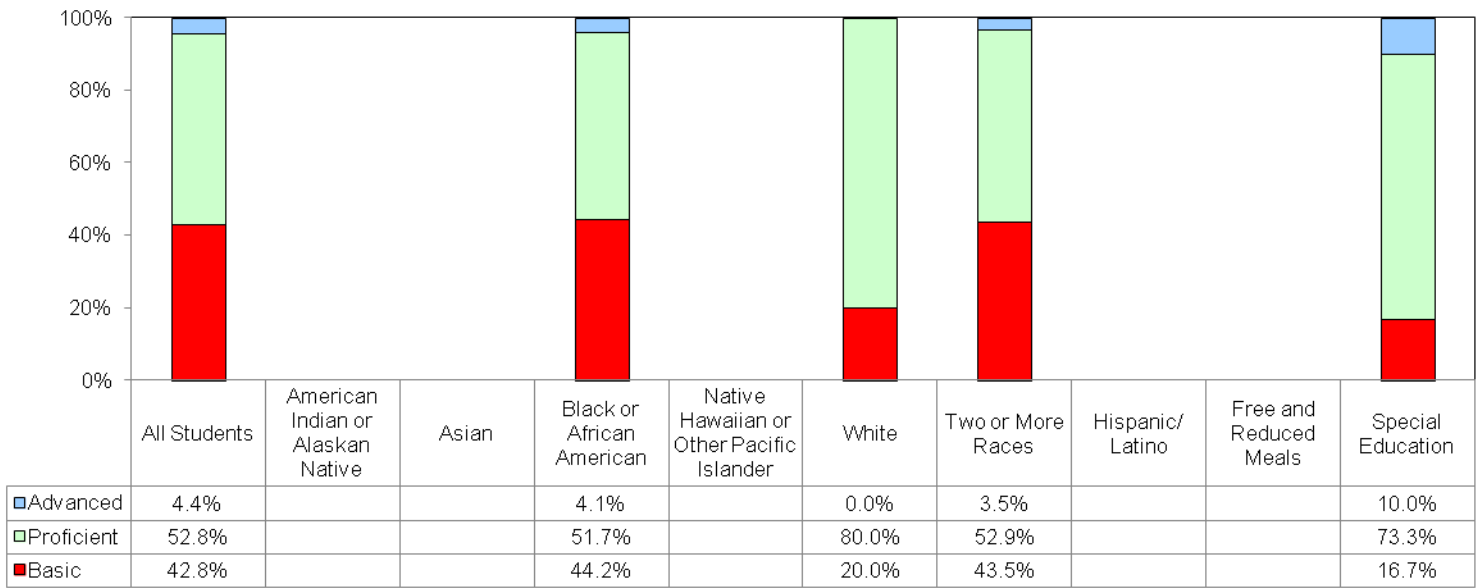
Alt-MSA

Alt-MSA Reading	100.0%
Alt-MSA Mathematics	90.0%

English Proficiency

ESOL LAS-Links Grades 6 to 8 - Percent Met Exit Criteria	N/A
--	-----

2010-2011 Algebra Data Analysis 1st Time Test Takers



AYP Reading and Mathematics 2010-2011

