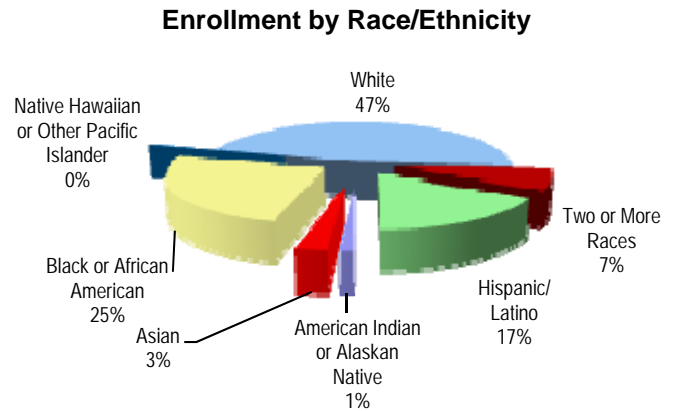


Enrollment and Attendance

Student Enrollment Sept. 30	2006-07	2007-08	2008-09	2009-10	2010-11
All Grades	332	353	363	359	373
Pre-School	35	52	60	7	2
Pre-Kindergarten				49	46
Kindergarten	49	53	60	68	75
01	42	45	54	61	60
02	52	41	43	45	60
03	43	53	45	40	41
04	60	49	53	38	48
05	51	60	48	51	41



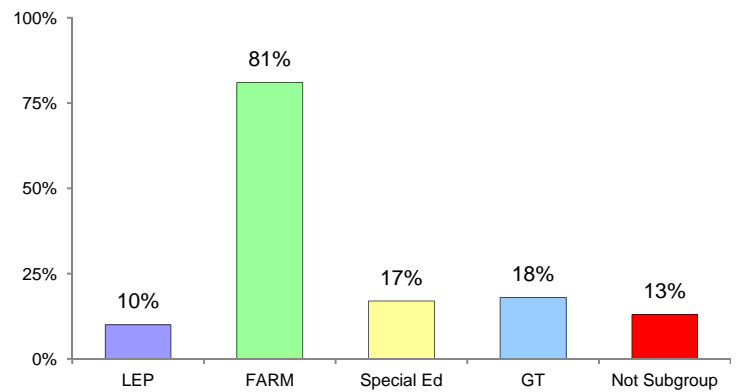
AYP Attendance 2010-2011

Mobility 2010-2011

All Students	94.4%
American Indian or Alaskan Native	*
Asian	94.8%
Black or African American	94.9%
Native Hawaiian or Other Pacific Islander	*
White	94.2%
Two or More Races	93.8%
Hispanic/Latino	94.4%
Free/Reduced Meals	94.1%
Special Education	94.8%
Limited English Proficiency	96.4%

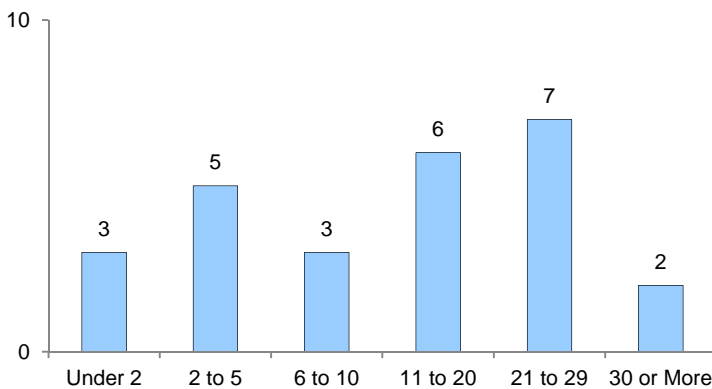
% Entry	18.4%
% Withdrawal	11.7%

Special Programs

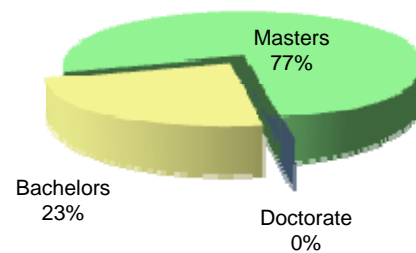


Classroom Teachers Characteristics

Instructional Staff Experience in Years

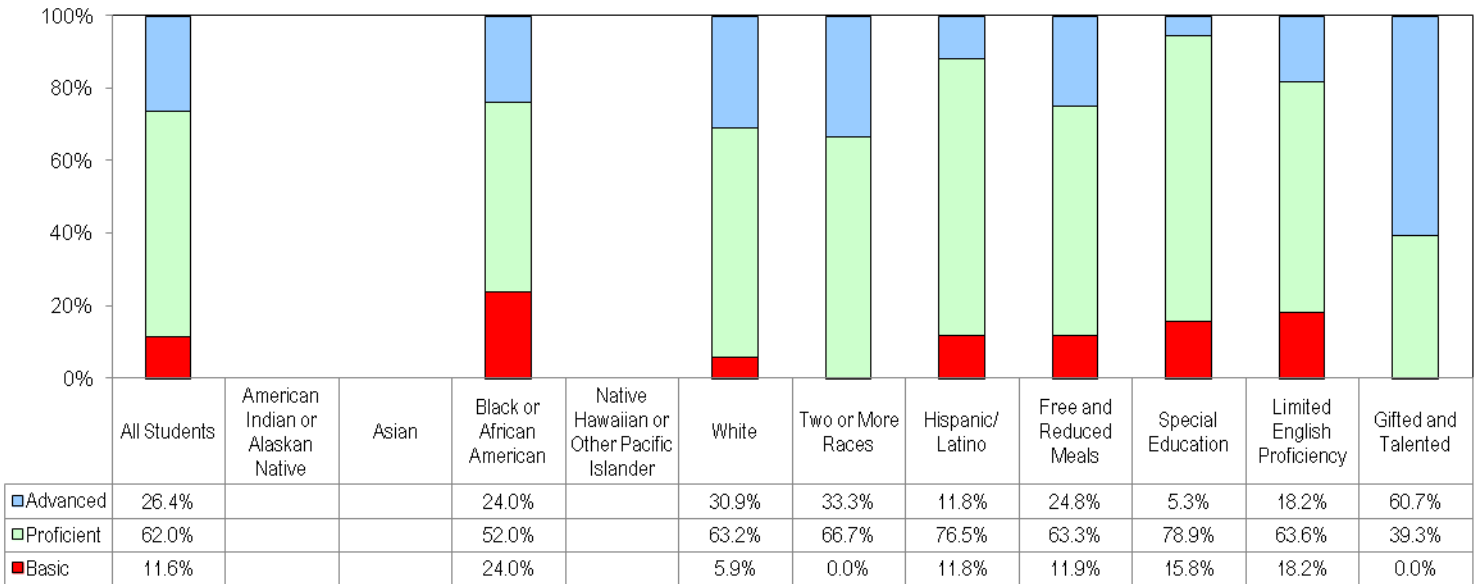


Education of Instructional Staff

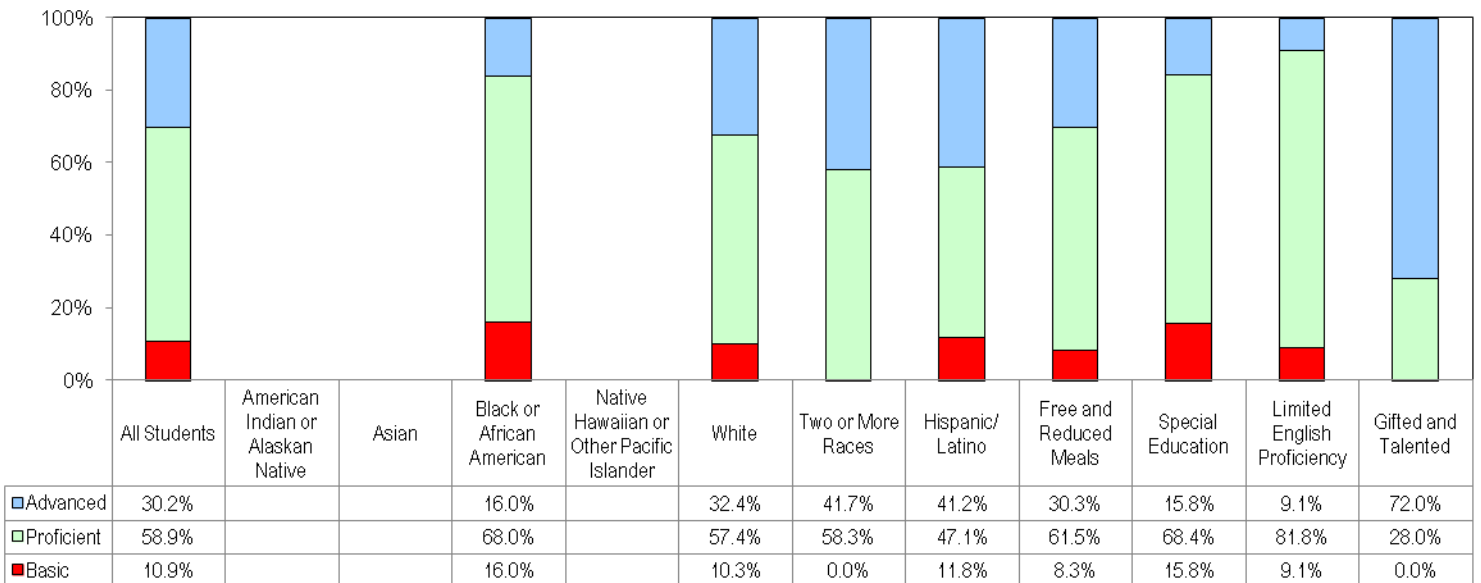


Student Performance

2010-2011 MSA Reading Performance Data



2010-2011 MSA Mathematics Performance Data



Alt-MSA

Alt-MSA Reading	*
Alt-MSA Mathematics	*

English Proficiency

ESOL LAS-Links - Percent Met Exit Criteria	60.0%
--	-------

Sussex Elementary – School Profile

Baltimore County Public Schools

