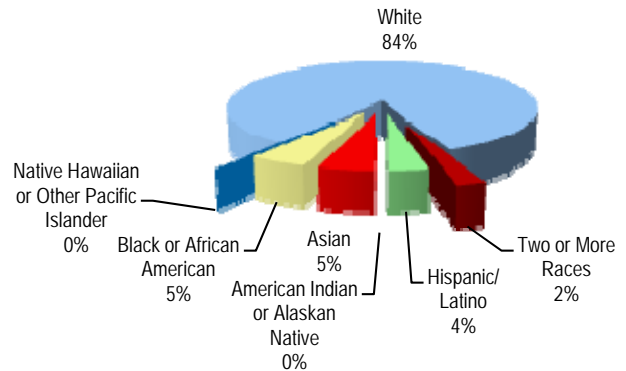


## Enrollment and Attendance

Student Enrollment Sept. 30	2006-07	2007-08	2008-09	2009-10	2010-11
All Grades	498	518	517	555	556
Pre-School		2	5		
Pre-Kindergarten				1	
Kindergarten	71	91	83	102	93
01	82	74	90	85	108
02	86	81	80	96	87
03	74	88	85	85	95
04	101	77	96	86	84
05	84	105	78	100	89

**Enrollment by Race/Ethnicity**



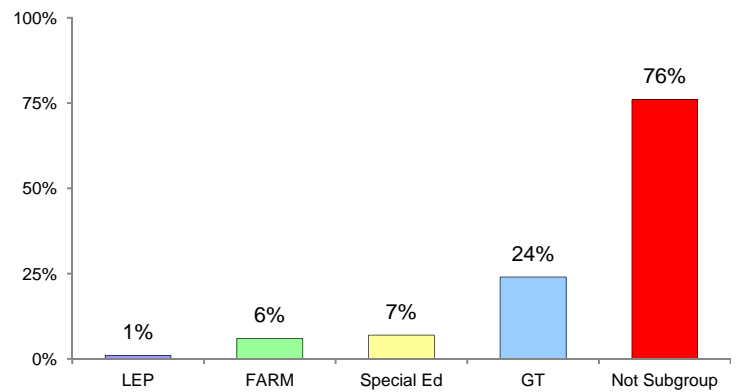
**AYP Attendance 2010-2011**

All Students	96.2%
American Indian or Alaskan Native	N/A
Asian	96.6%
Black or African American	96.0%
Native Hawaiian or Other Pacific Islander	N/A
White	96.1%
Two or More Races	96.8%
Hispanic/Latino	97.1%
Free/Reduced Meals	95.0%
Special Education	96.1%
Limited English Proficiency	94.4%

**Mobility 2010-2011**

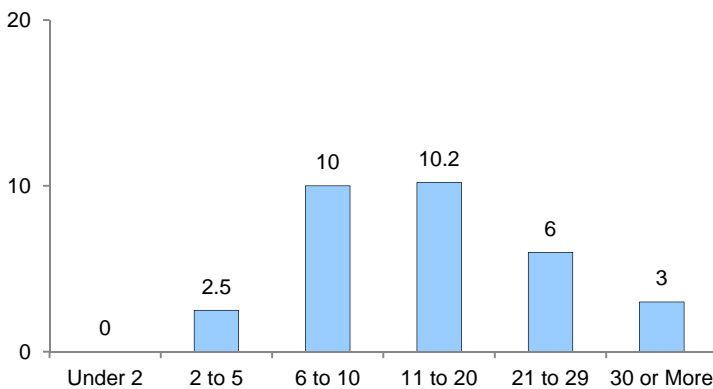
% Entry	2.1%
% Withdrawal	1.6%

**Special Programs**

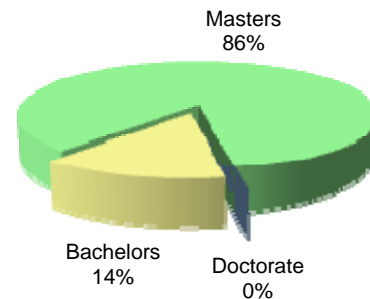


## Classroom Teachers Characteristics

**Instructional Staff Experience in Years**

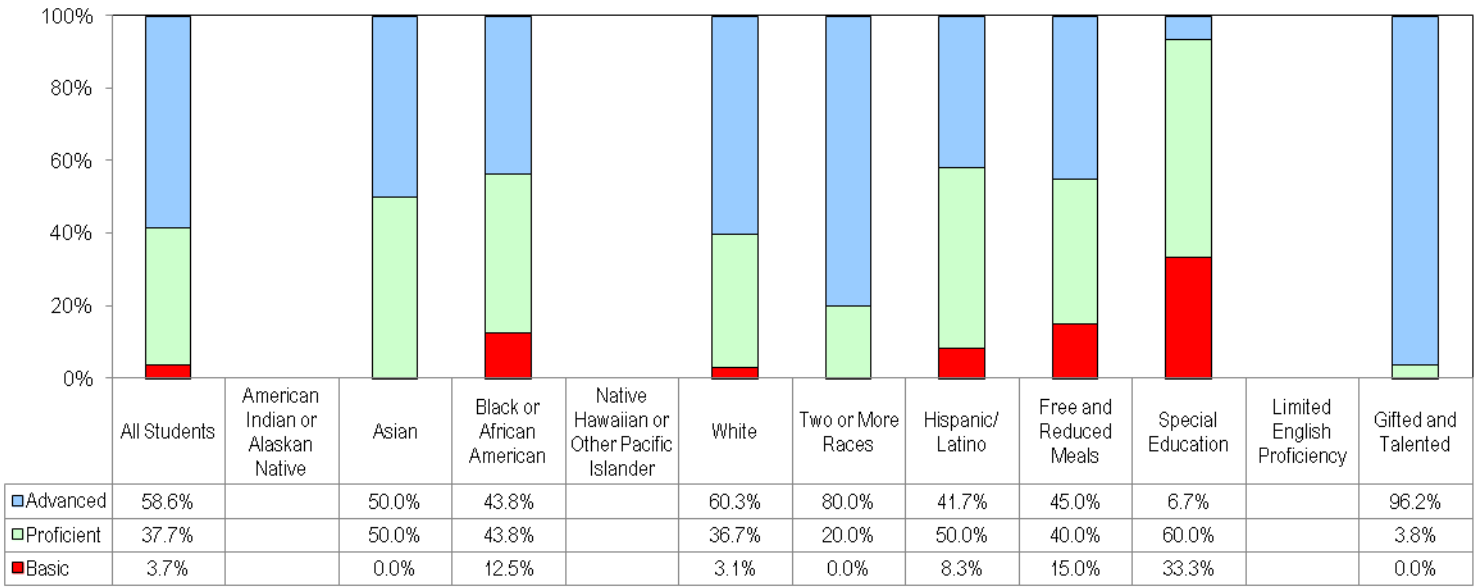


**Education of Instructional Staff**

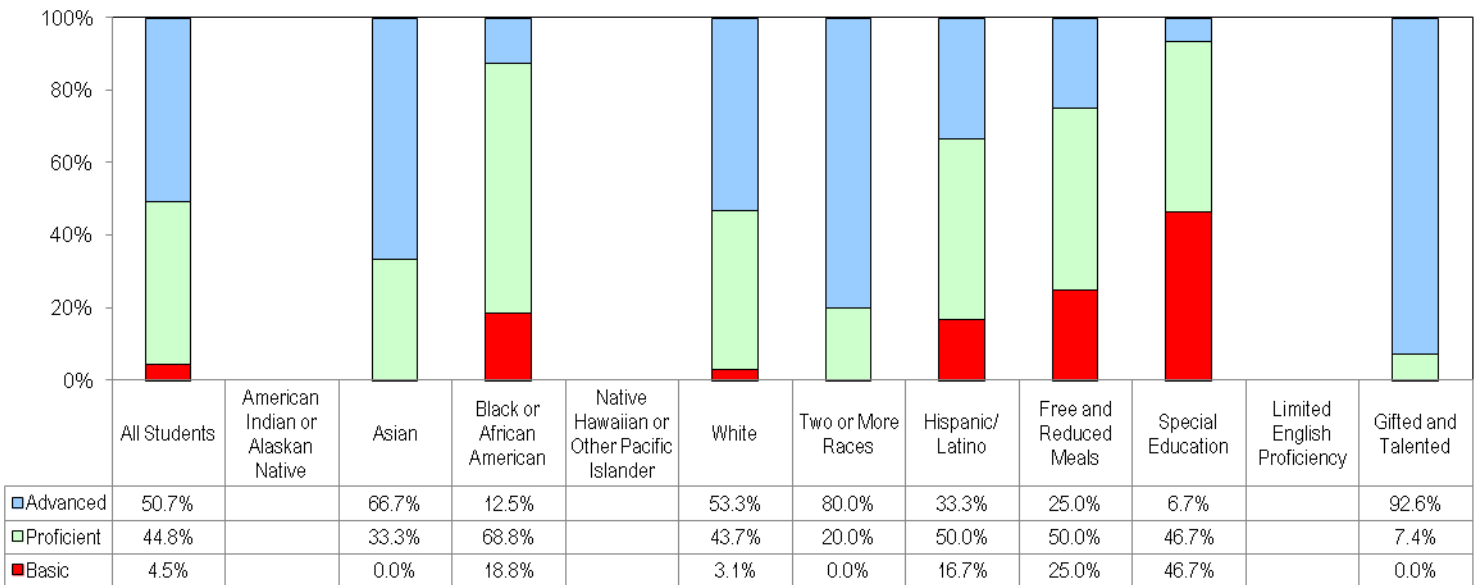


### Student Performance

2010-2011 MSA Reading Performance Data



2010-2011 MSA Mathematics Performance Data



**Alt-MSA**

Alt-MSA Reading	*
Alt-MSA Mathematics	*

**English Proficiency**

ESOL LAS-Links - Percent Met Exit Criteria	*
--	---

# Sparks Elementary – School Profile

Baltimore County Public Schools

