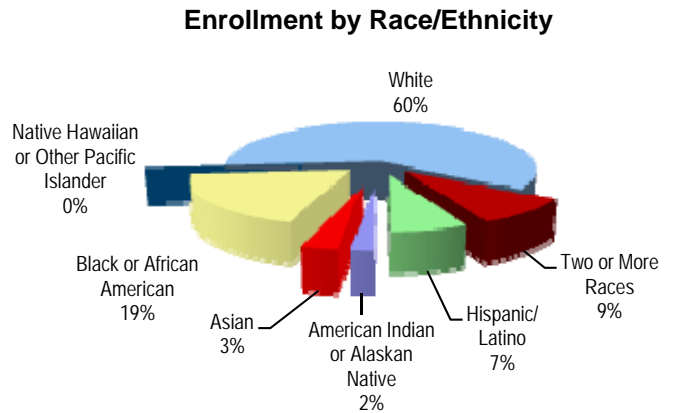


## Enrollment and Attendance

Student Enrollment Sept. 30	2006-07	2007-08	2008-09	2009-10	2010-11
All Grades	542	547	597	580	600
Pre-School	76	64	62	5	1
Pre-Kindergarten				67	73
Kindergarten	74	84	87	63	86
01	87	73	89	87	72
02	78	86	83	96	81
03	73	80	97	79	100
04	75	82	92	102	83
05	79	78	87	81	104



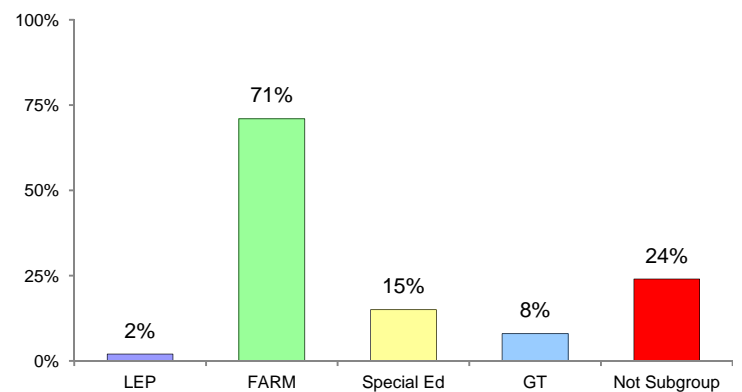
### AYP Attendance 2010-2011

All Students	94.8%
American Indian or Alaskan Native	92.7%
Asian	93.8%
Black or African American	95.8%
Native Hawaiian or Other Pacific Islander	N/A
White	94.7%
Two or More Races	94.6%
Hispanic/Latino	94.2%
Free/Reduced Meals	94.5%
Special Education	94.2%
Limited English Proficiency	92.0%

### Mobility 2010-2011

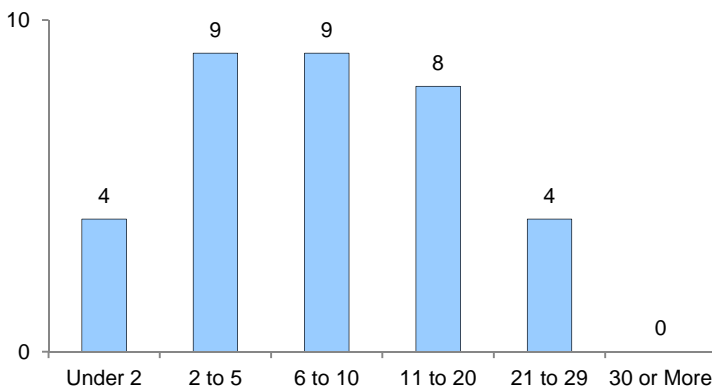
% Entry	13.0%
% Withdrawal	10.0%

### Special Programs

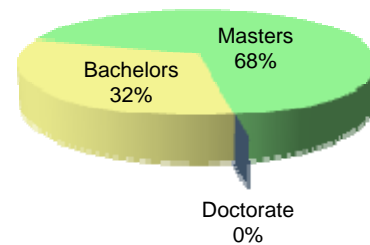


## Classroom Teachers Characteristics

### Instructional Staff Experience in Years

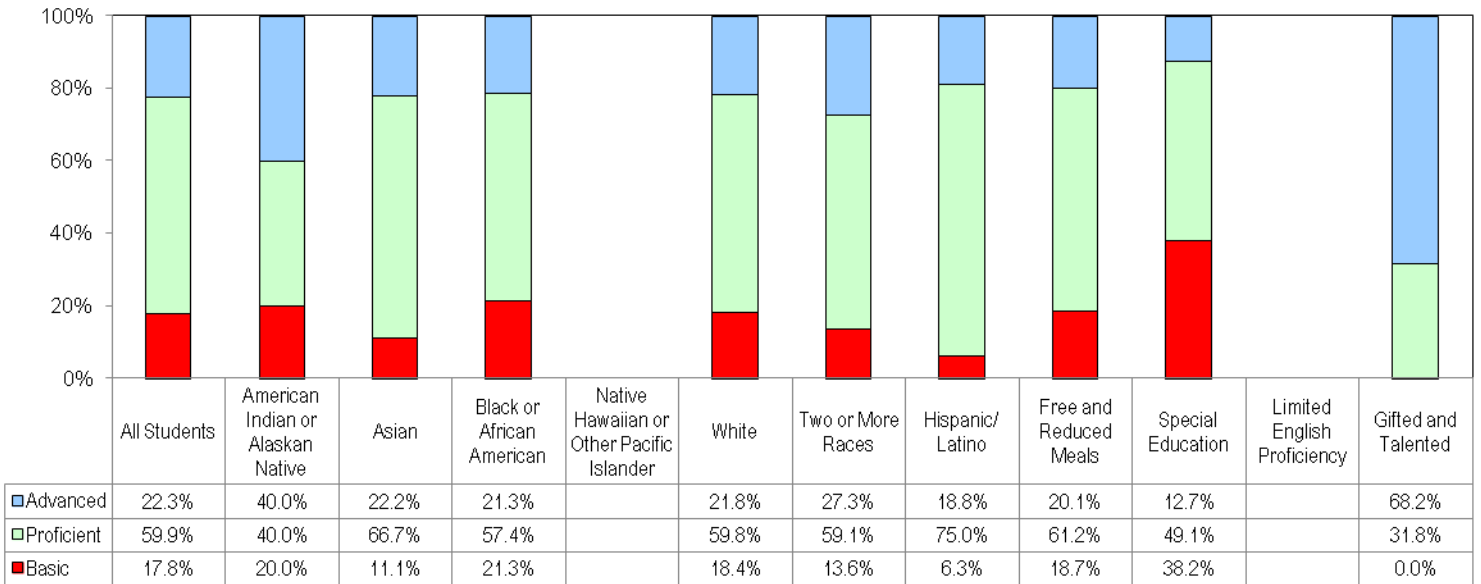


### Education of Instructional Staff

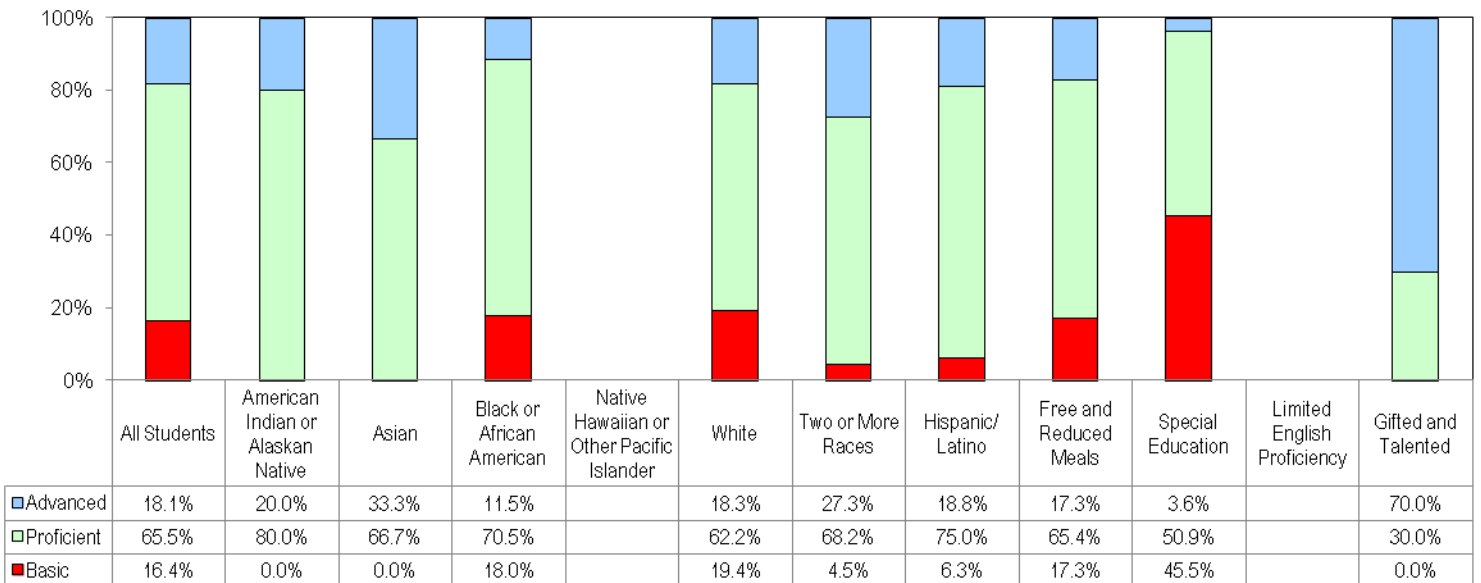


Student Performance

2010-2011 MSA Reading Performance Data



2010-2011 MSA Mathematics Performance Data



**Alt-MSA**

Alt-MSA Reading	*
Alt-MSA Mathematics	*

**English Proficiency**

ESOL LAS-Links - Percent Met Exit Criteria	*
--	---

