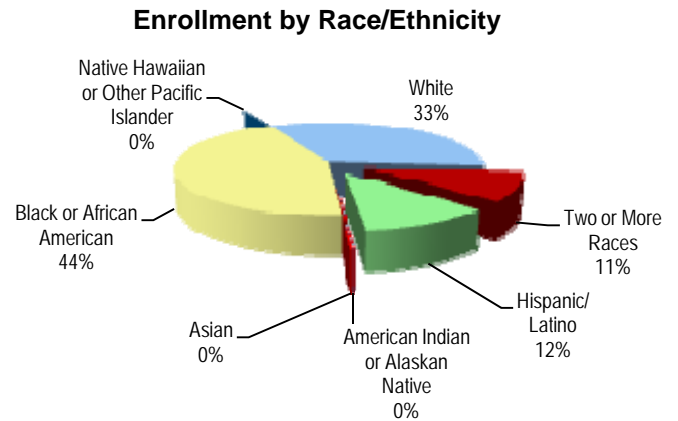


## Enrollment and Attendance

Student Enrollment Sept. 30	2006-07	2007-08	2008-09	2009-10	2010-11
All Grades	528	485	469	461	428
Pre-School	63	51	62	4	
Pre-Kindergarten				51	62
Kindergarten	93	74	59	76	66
01	92	90	66	58	74
02	83	84	81	73	59
03	70	72	69	63	56
04	55	60	75	68	57
05	72	54	57	68	54



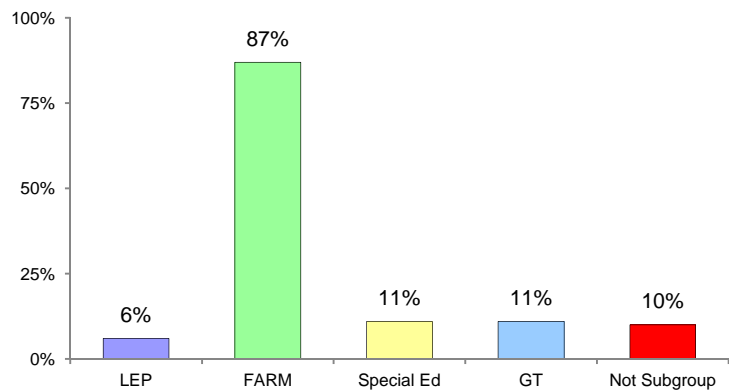
### AYP Attendance 2010-2011

All Students	93.7%
American Indian or Alaskan Native	N/A
Asian	*
Black or African American	93.7%
Native Hawaiian or Other Pacific Islander	N/A
White	93.3%
Two or More Races	92.2%
Hispanic/Latino	96.8%
Free/Reduced Meals	93.6%
Special Education	93.8%
Limited English Proficiency	97.5%

### Mobility 2010-2011

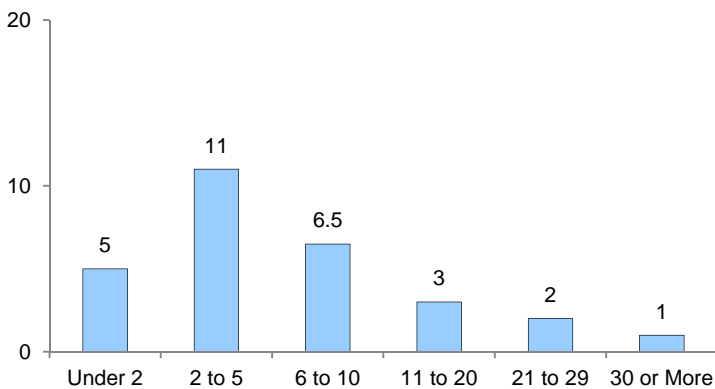
% Entry	20.3%
% Withdrawal	13.3%

### Special Programs

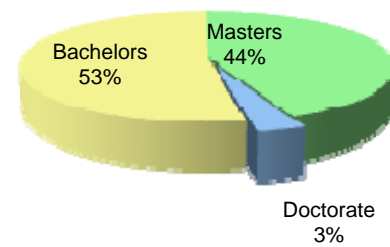


## Classroom Teachers Characteristics

### Instructional Staff Experience in Years

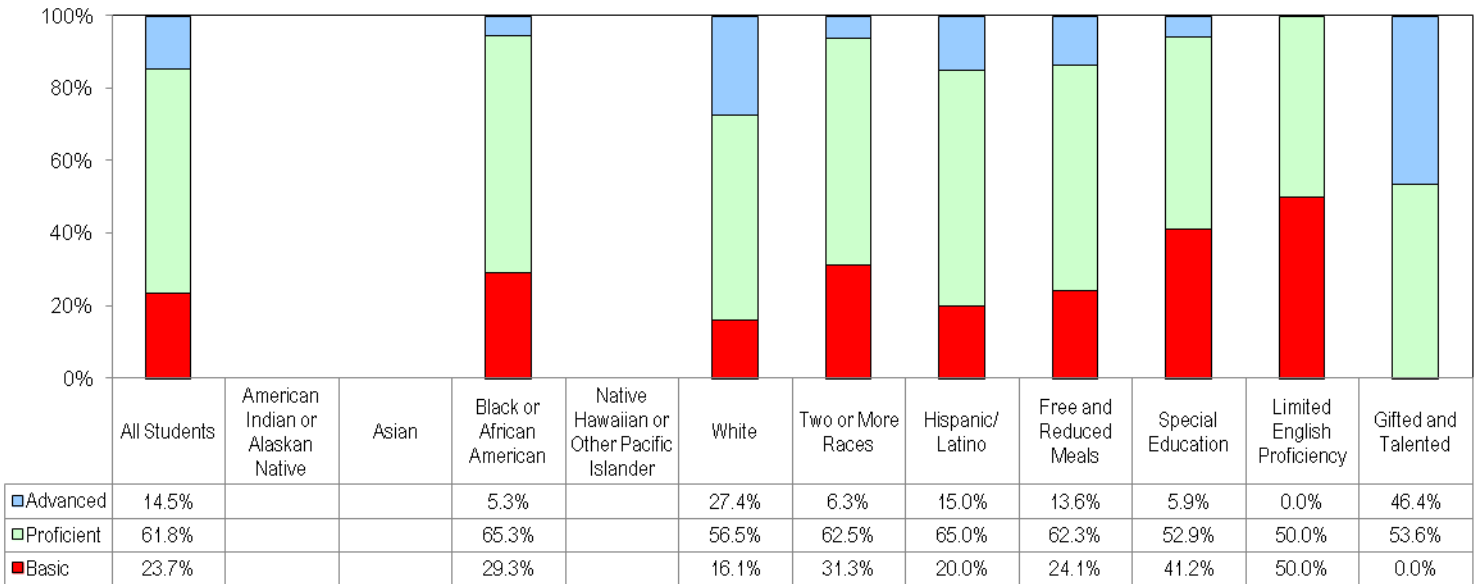


### Education of Instructional Staff

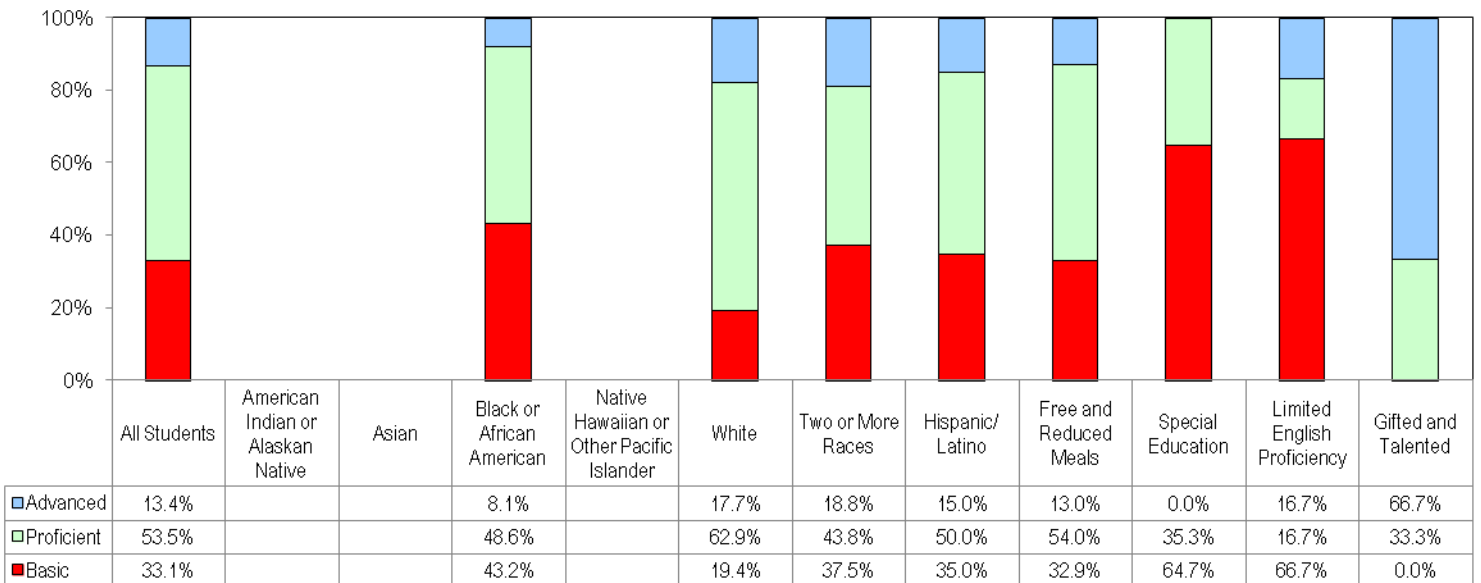


### Student Performance

2010-2011 MSA Reading Performance Data



2010-2011 MSA Mathematics Performance Data



**Alt-MSA**

Alt-MSA Reading	*
Alt-MSA Mathematics	*

**English Proficiency**

ESOL LAS-Links - Percent Met Exit Criteria	*
--	---

