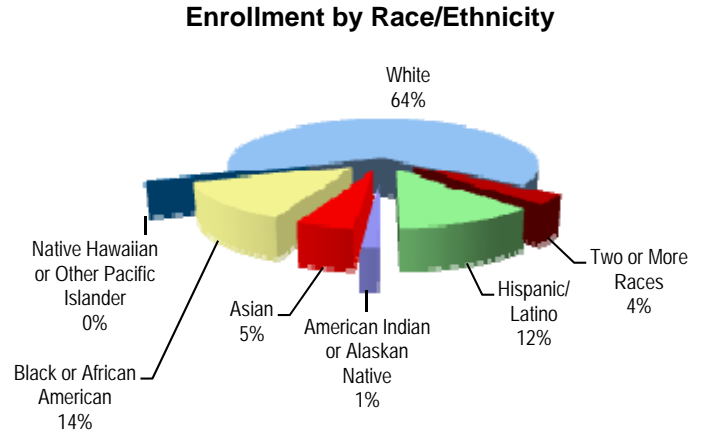


Enrollment and Attendance

Student Enrollment Sept. 30	2006-07	2007-08	2008-09	2009-10	2010-11
All Grades	724	670	652	643	640
06	248	201	210	221	212
07	241	245	203	206	223
08	235	224	239	216	205



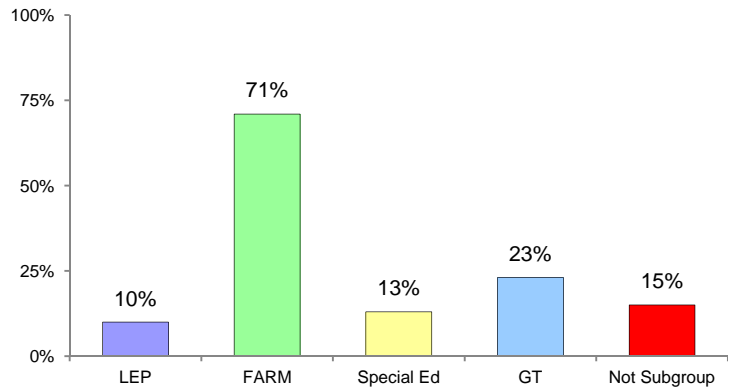
**AYP Attendance 2010-2011**

All Students	94.3%
American Indian or Alaskan Native	94.5%
Asian	96.1%
Black or African American	94.6%
Native Hawaiian or Other Pacific Islander	*
White	94.0%
Two or More Races	94.0%
Hispanic/Latino	94.7%
Free/Reduced Meals	93.7%
Special Education	93.3%
Limited English Proficiency	95.8%

**Mobility 2010-2011**

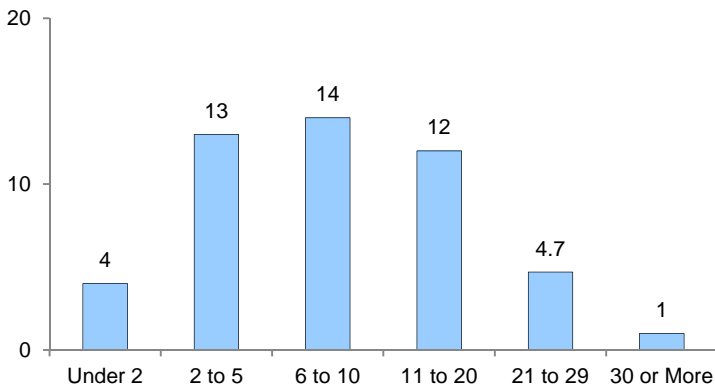
% Entry	19.2%
% Withdrawal	13.4%

**Special Programs**

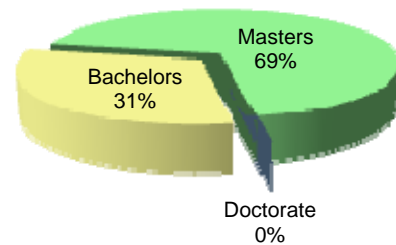


Classroom Teachers Characteristics

**Instructional Staff Experience in Years**

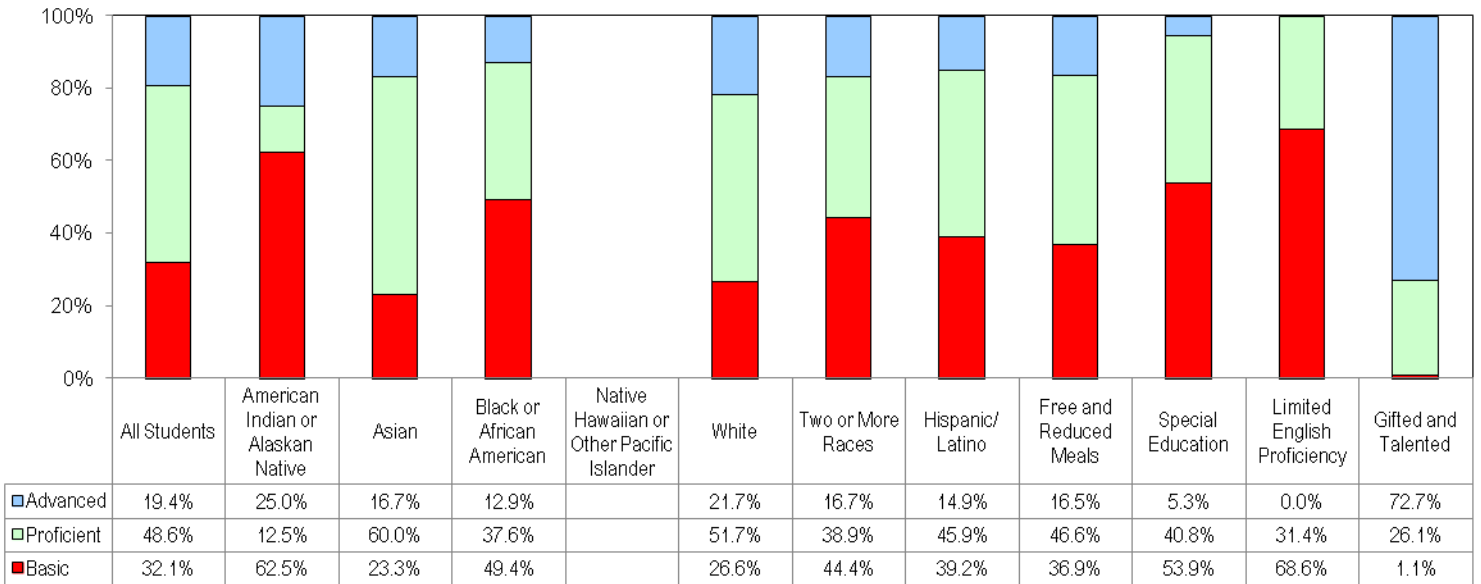


**Education of Instructional Staff**

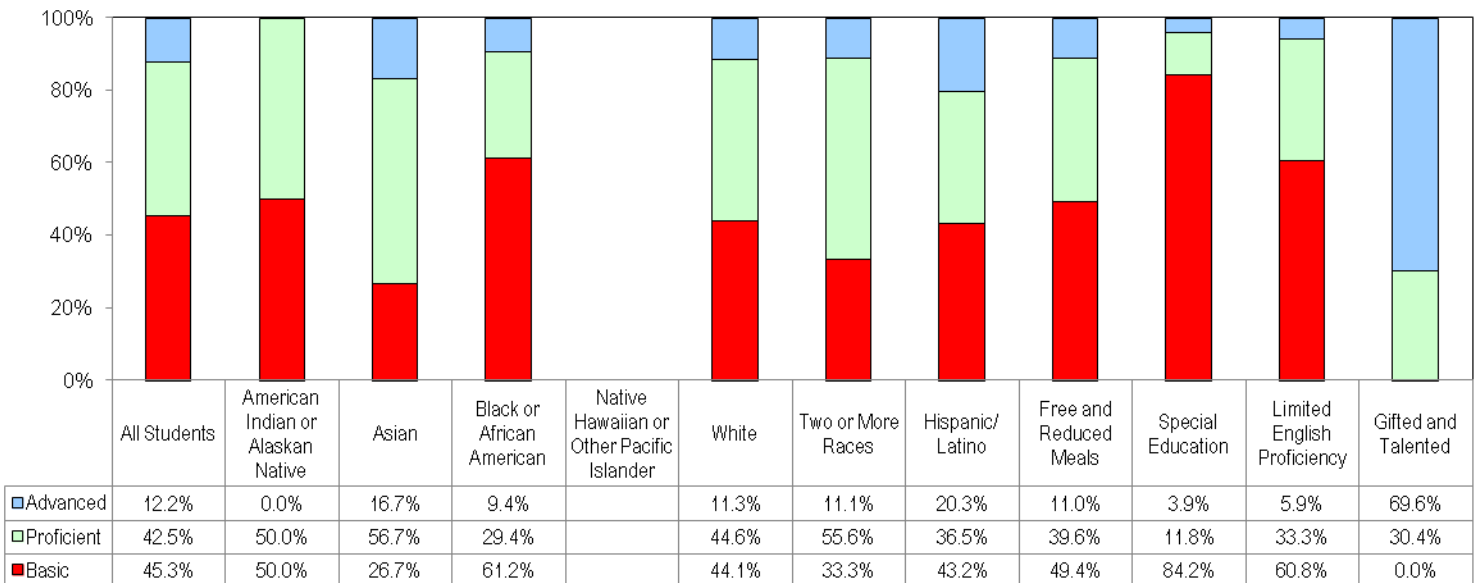


Student Performance

2010-2011 MSA Reading Performance Data



2010-2011 MSA Mathematics Performance Data



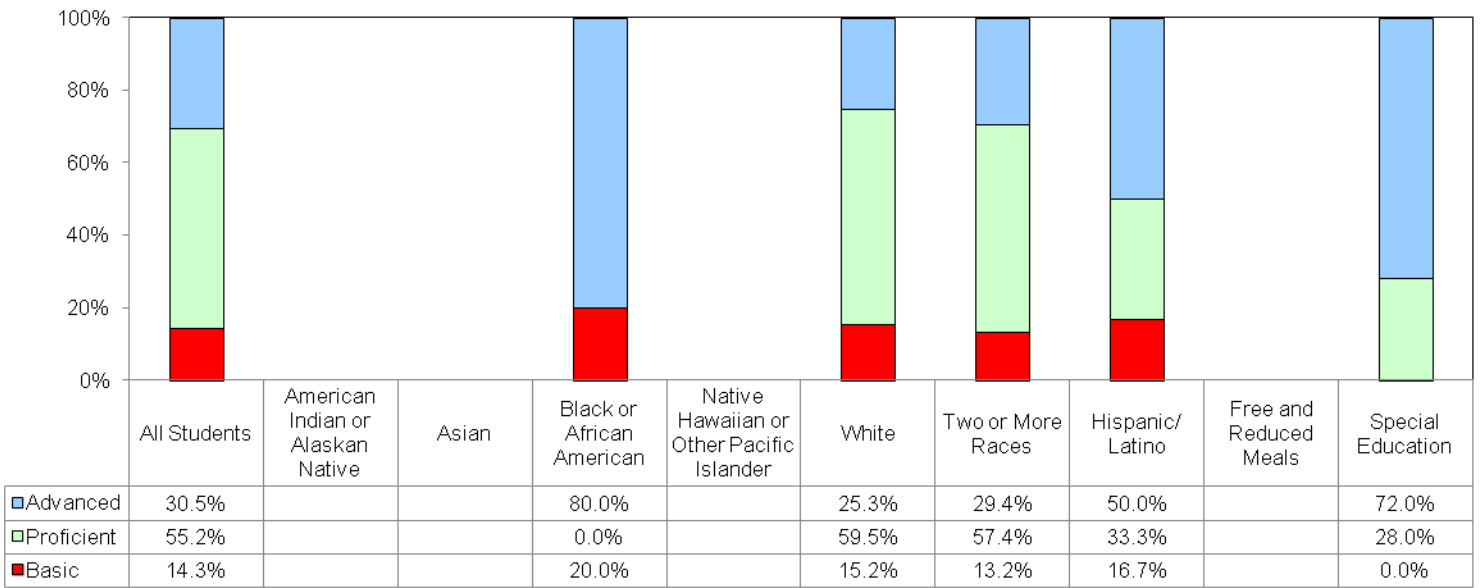
**Alt-MSA**

Alt-MSA Reading	100.0%
Alt-MSA Mathematics	100.0%

**English Proficiency**

ESOL LAS-Links Grades 6 to 8 - Percent Met Exit Criteria	100.0%
--	--------

### 2010-2011 Algebra Data Analysis 1st Time Test Takers



### AYP Reading and Mathematics 2010-2011

