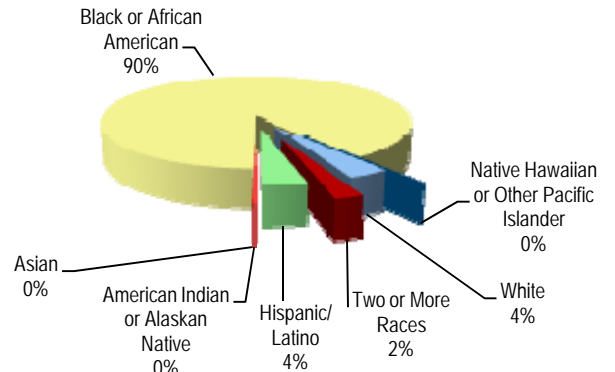


Enrollment and Attendance

| Student Enrollment Sept. 30 | 2006-07 | 2007-08 | 2008-09 | 2009-10 | 2010-11 |
|-----------------------------|---------|---------|---------|---------|---------|
| All Grades | 539 | 531 | 531 | 500 | 458 |
| Pre-School | 55 | 50 | 50 | 14 | 4 |
| Pre-Kindergarten | | | | 41 | 47 |
| Kindergarten | 80 | 63 | 67 | 65 | 62 |
| 01 | 86 | 82 | 79 | 72 | 65 |
| 02 | 81 | 92 | 78 | 81 | 75 |
| 03 | 71 | 86 | 97 | 77 | 77 |
| 04 | 95 | 72 | 84 | 74 | 66 |
| 05 | 71 | 86 | 76 | 76 | 62 |

Enrollment by Race/Ethnicity



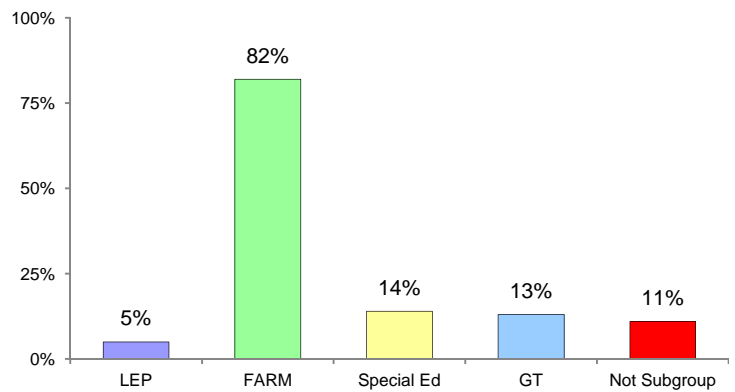
AYP Attendance 2010-2011

| | |
|---|-------|
| All Students | 95.4% |
| American Indian or Alaskan Native | N/A |
| Asian | * |
| Black or African American | 95.5% |
| Native Hawaiian or Other Pacific Islander | N/A |
| White | 94.2% |
| Two or More Races | 96.1% |
| Hispanic/Latino | 94.4% |
| Free/Reduced Meals | 95.2% |
| Special Education | 93.9% |
| Limited English Proficiency | 96.1% |

Mobility 2010-2011

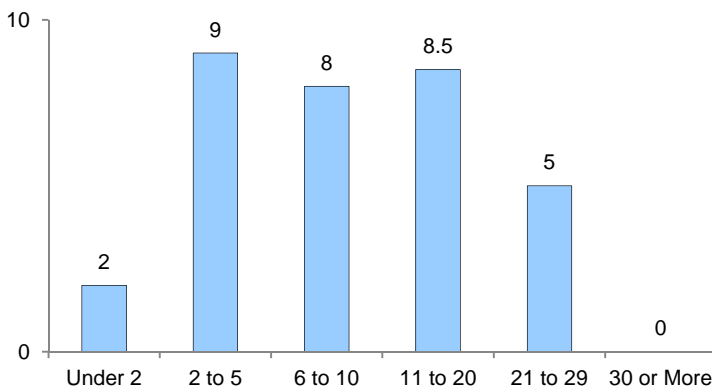
| | |
|--------------|-------|
| % Entry | 19.7% |
| % Withdrawal | 20.2% |

Special Programs

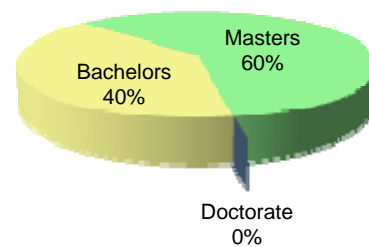


Classroom Teachers Characteristics

Instructional Staff Experience in Years

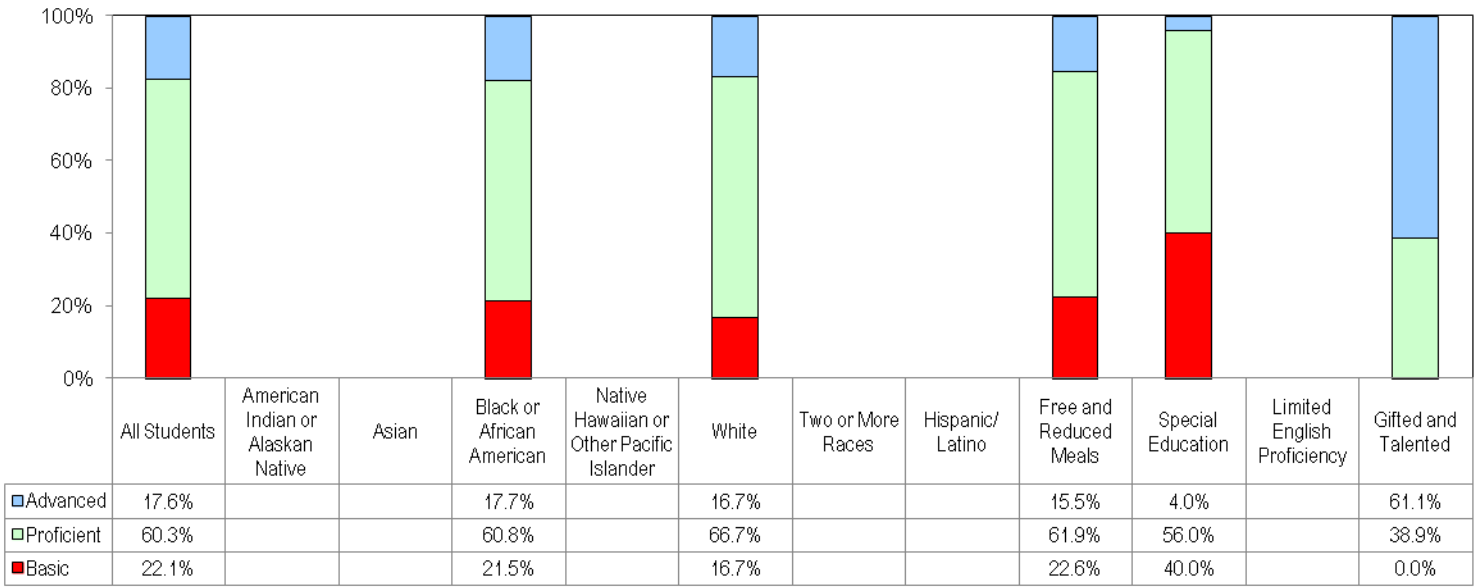


Education of Instructional Staff

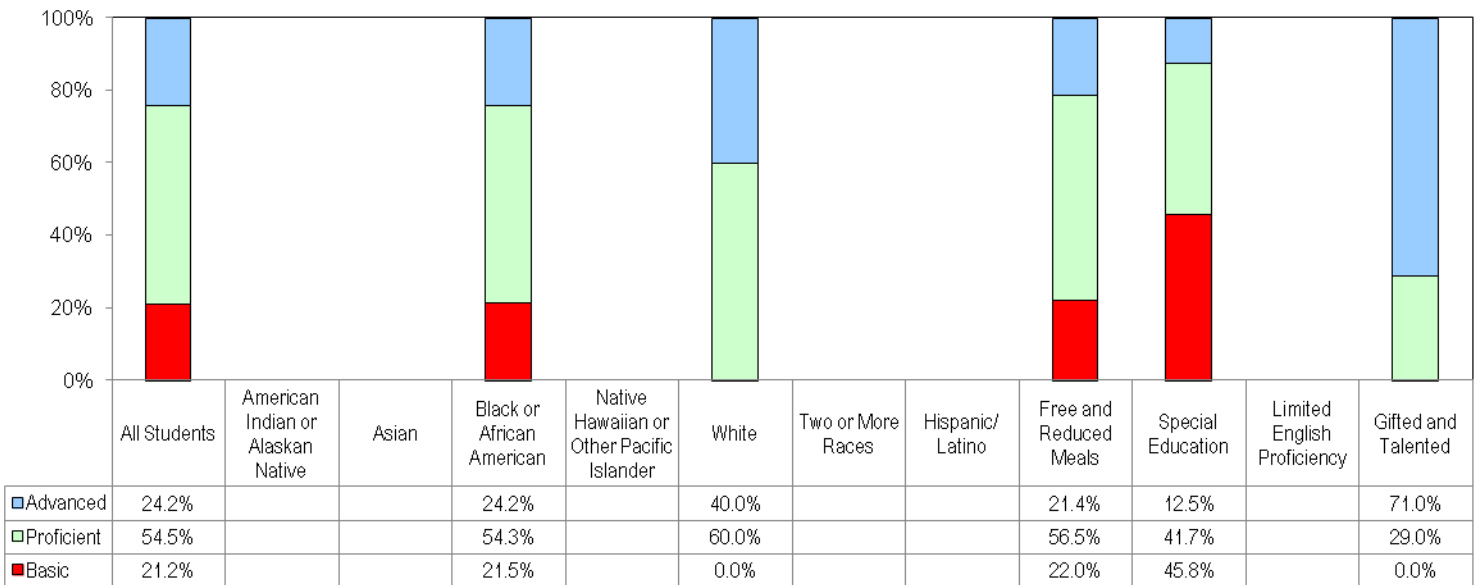


Student Performance

2010-2011 MSA Reading Performance Data



2010-2011 MSA Mathematics Performance Data



Alt-MSA

| | |
|---------------------|---|
| Alt-MSA Reading | * |
| Alt-MSA Mathematics | * |

English Proficiency

| | |
|--|---|
| ESOL LAS-Links - Percent Met Exit Criteria | * |
|--|---|

