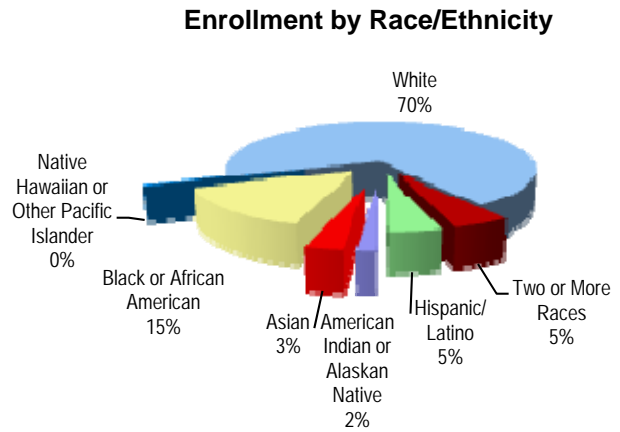


Enrollment and Attendance

Student Enrollment Sept. 30	2006-07	2007-08	2008-09	2009-10	2010-11
All Grades	178	193	208	198	197
Pre-School	50	47	46	10	15
Pre-Kindergarten				25	18
Kindergarten	22	28	26	32	31
01	22	27	25	25	25
02	23	22	28	26	27
03	26	26	27	27	27
04	17	27	28	24	27
05	18	16	28	29	27



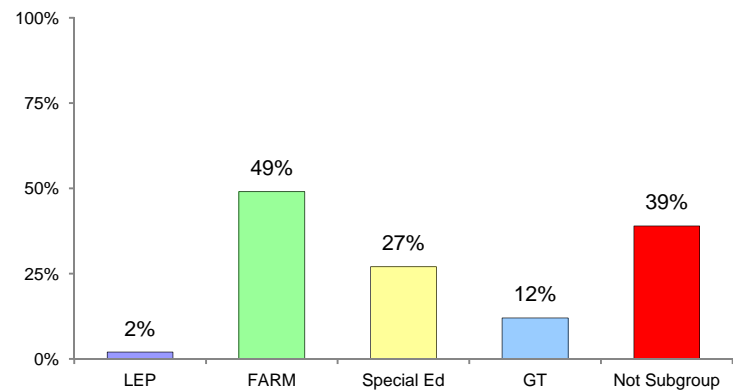
AYP Attendance 2010-2011

Mobility 2010-2011

All Students	95.9%
American Indian or Alaskan Native	*
Asian	98.2%
Black or African American	96.2%
Native Hawaiian or Other Pacific Islander	*
White	95.7%
Two or More Races	96.5%
Hispanic/Latino	94.8%
Free/Reduced Meals	95.2%
Special Education	94.3%
Limited English Proficiency	*

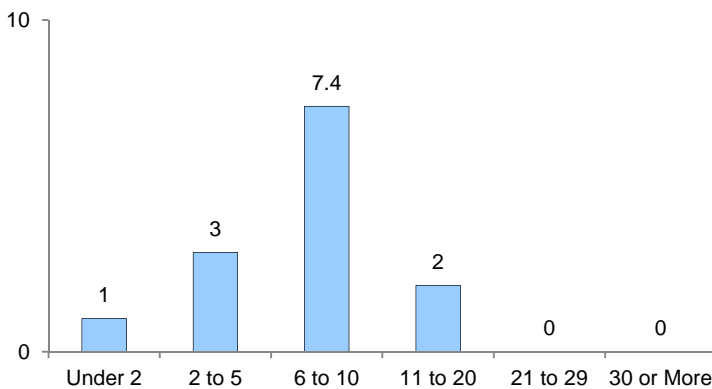
% Entry	5.5%
% Withdrawal	3.7%

Special Programs

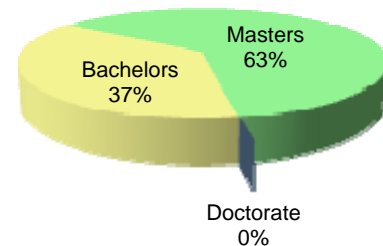


Classroom Teachers Characteristics

Instructional Staff Experience in Years

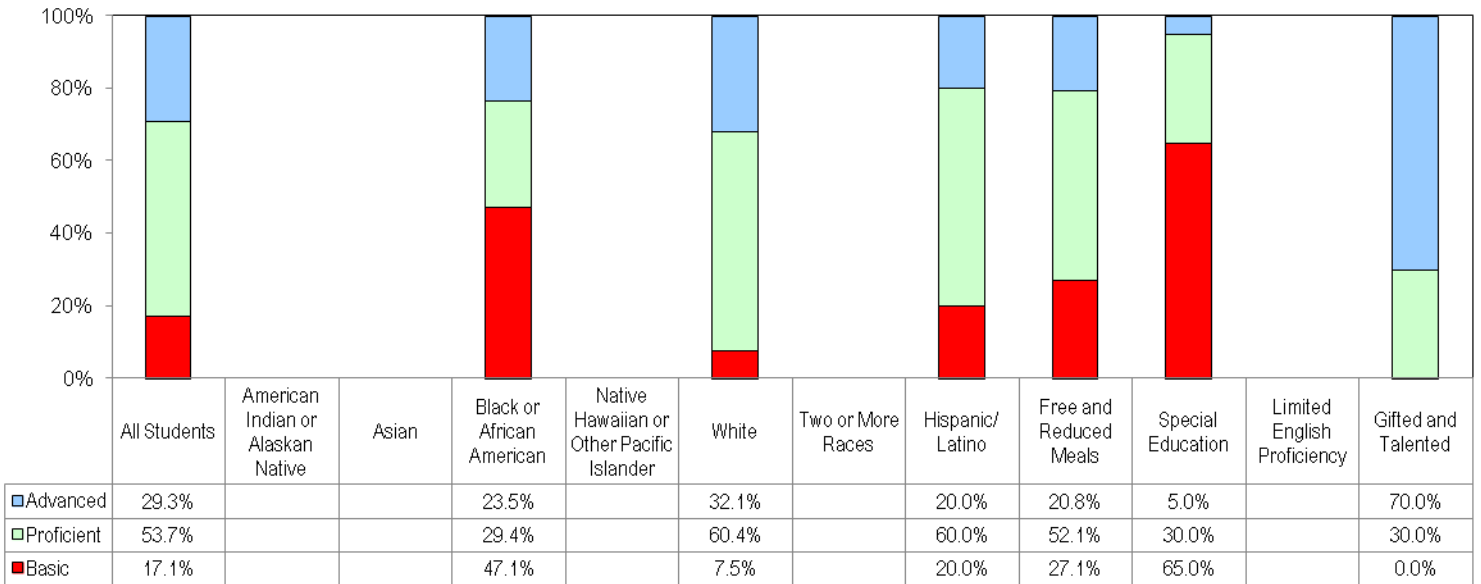


Education of Instructional Staff

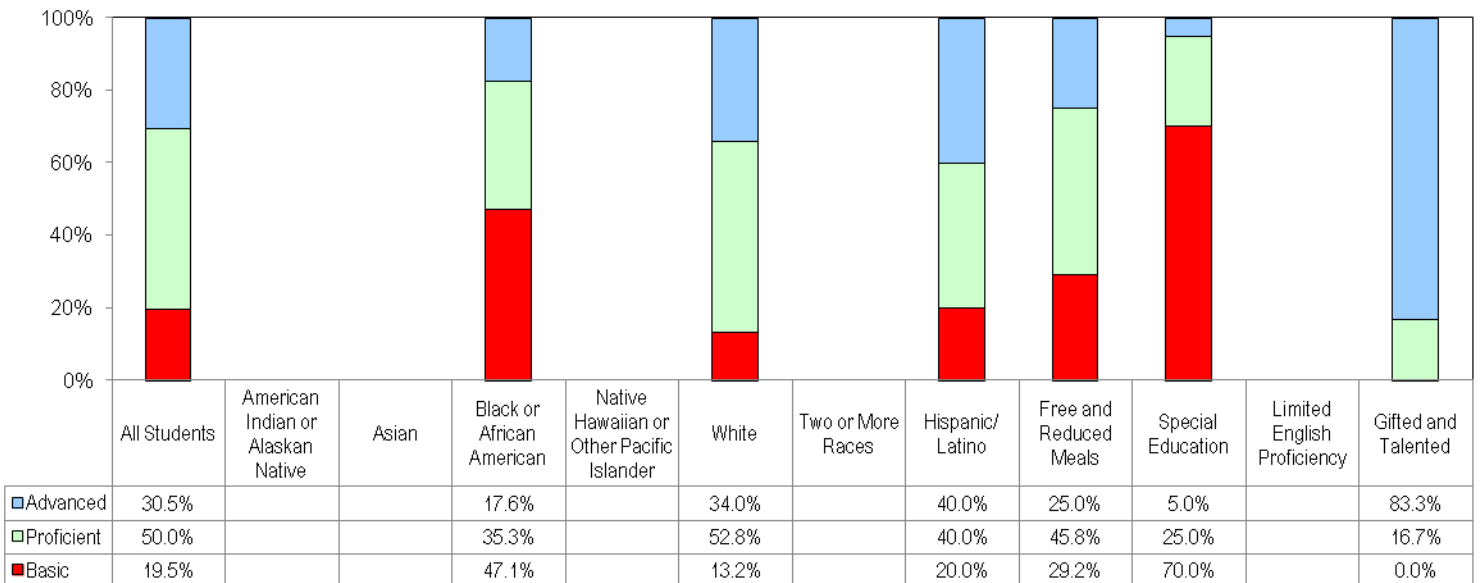


Student Performance

2010-2011 MSA Reading Performance Data



2010-2011 MSA Mathematics Performance Data



Alt-MSA

Alt-MSA Reading	*
Alt-MSA Mathematics	*

English Proficiency

ESOL LAS-Links - Percent Met Exit Criteria	N/A
--	-----

