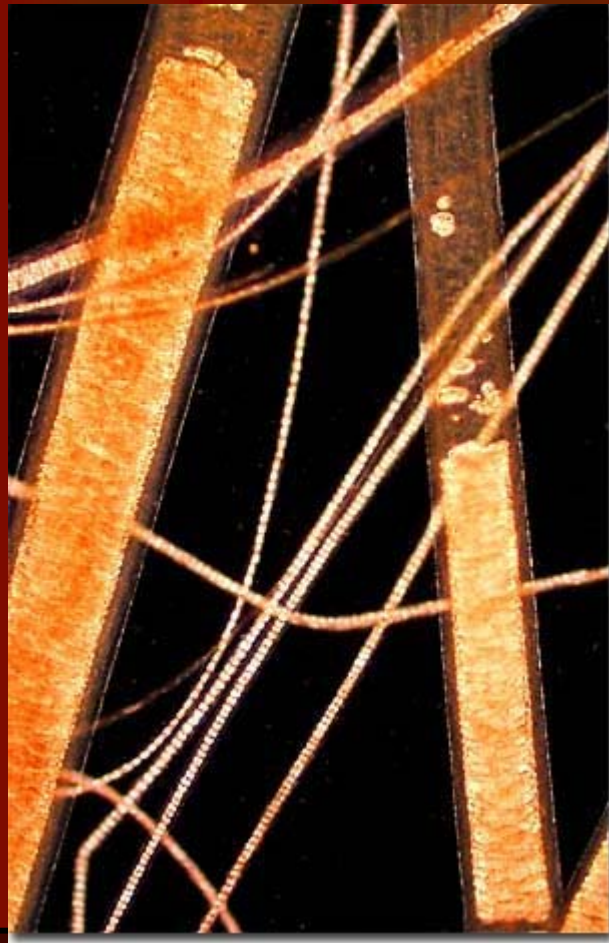


WHO AM I??

Can you identify these specimens?

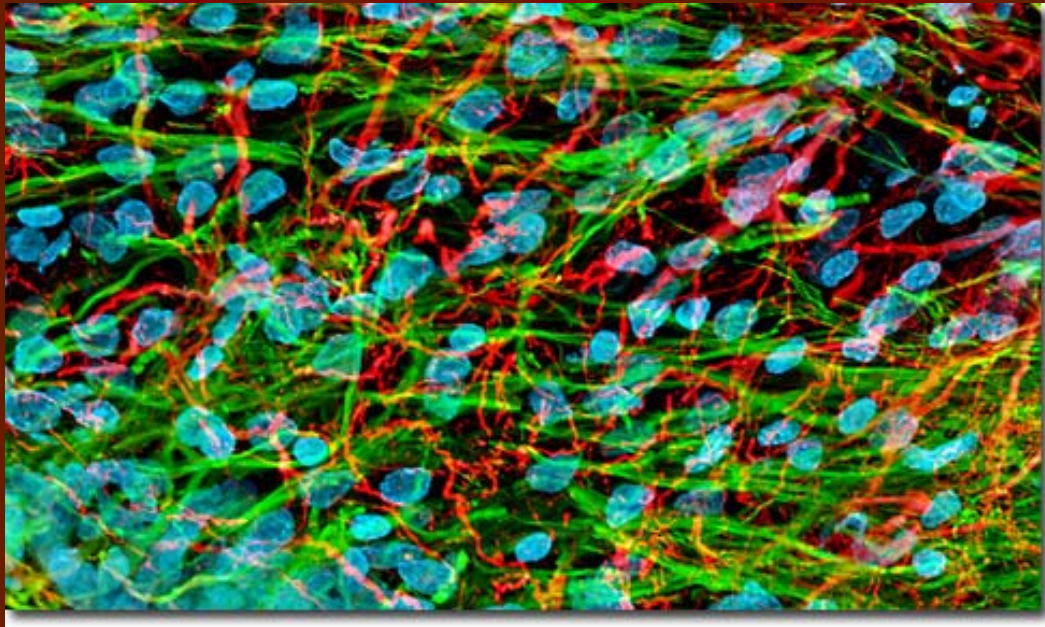
Mink Fur

Darkfield Illumination



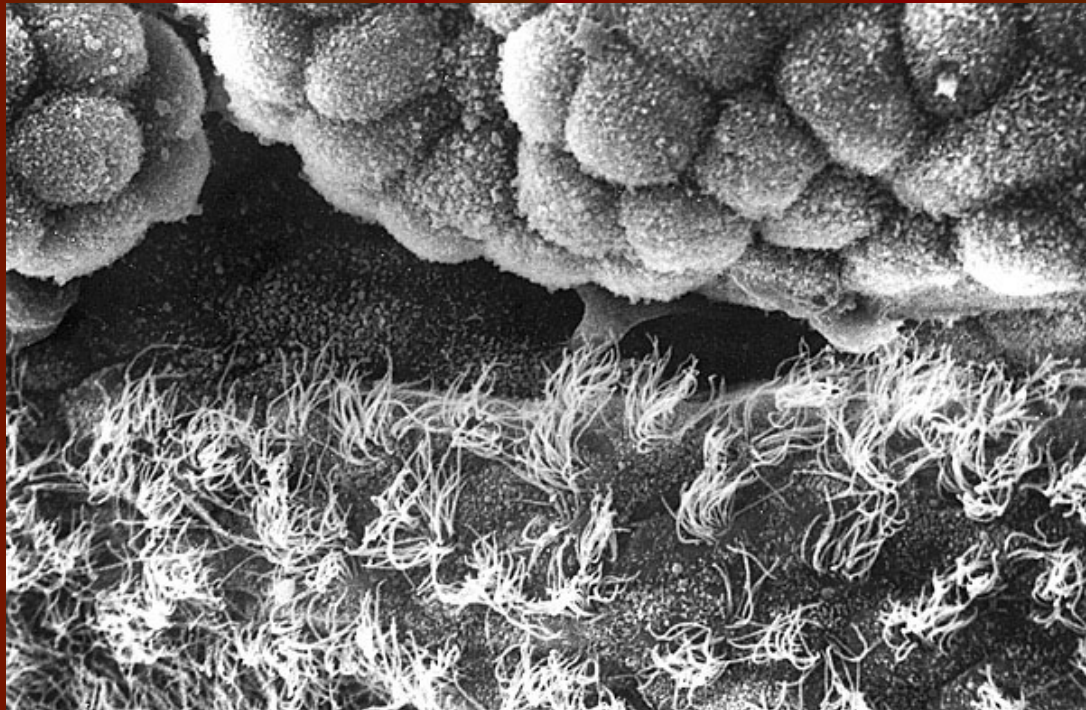
Rat Brain - Hippocampus Neurons

Fluorescence Microscopy



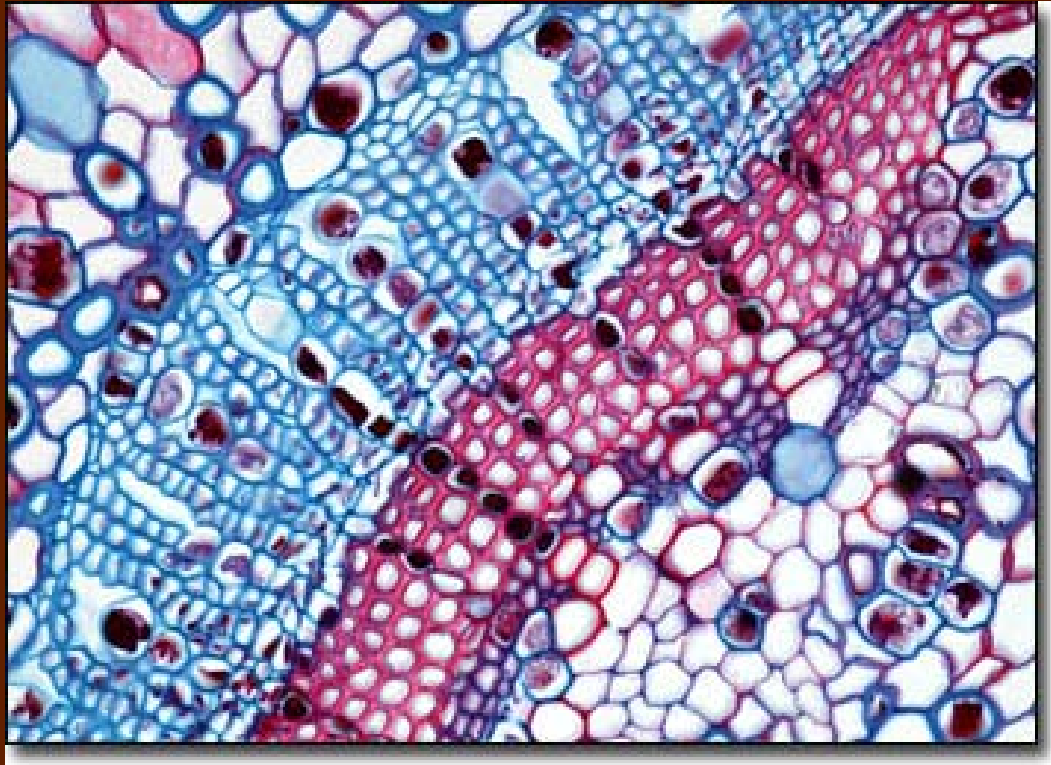
Small Intestine Microvilli and Cilia

Scanning Electron Microscope



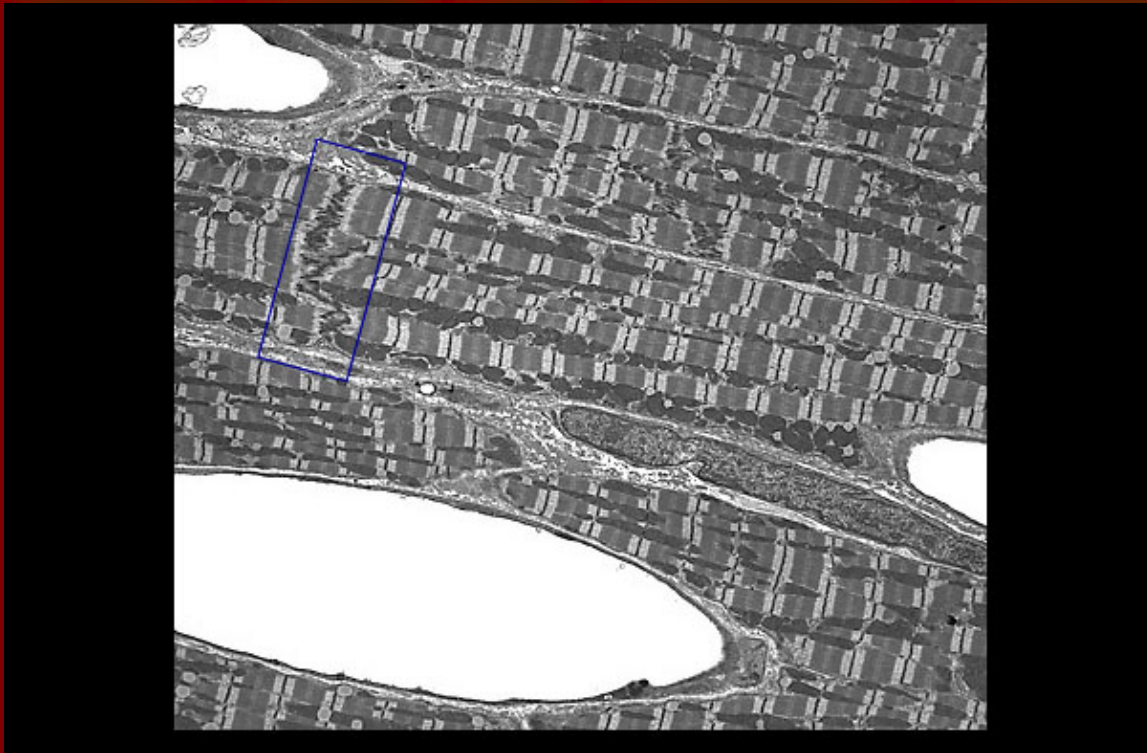
Pine Needle

Brightfield Microscopy

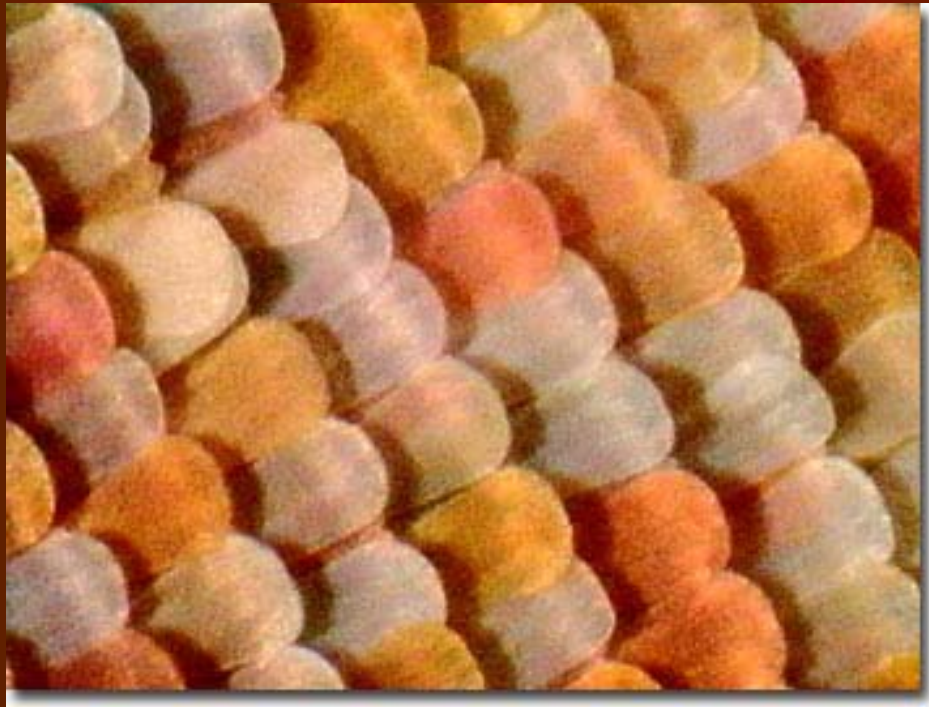


Cardiac Muscle Tissue

Transmission Electron Microscope



Clipper Butterfly Wing Reflected Light Microscopy



Deer Tick Mouthparts

Differential Interference Microscopy



CREDITS

Histology Learning System,
www.bu.edu/histology/m/t_electr.htm
Molecular Expressions: Images from the
Microscope, micro.magnet.fsu.edu/