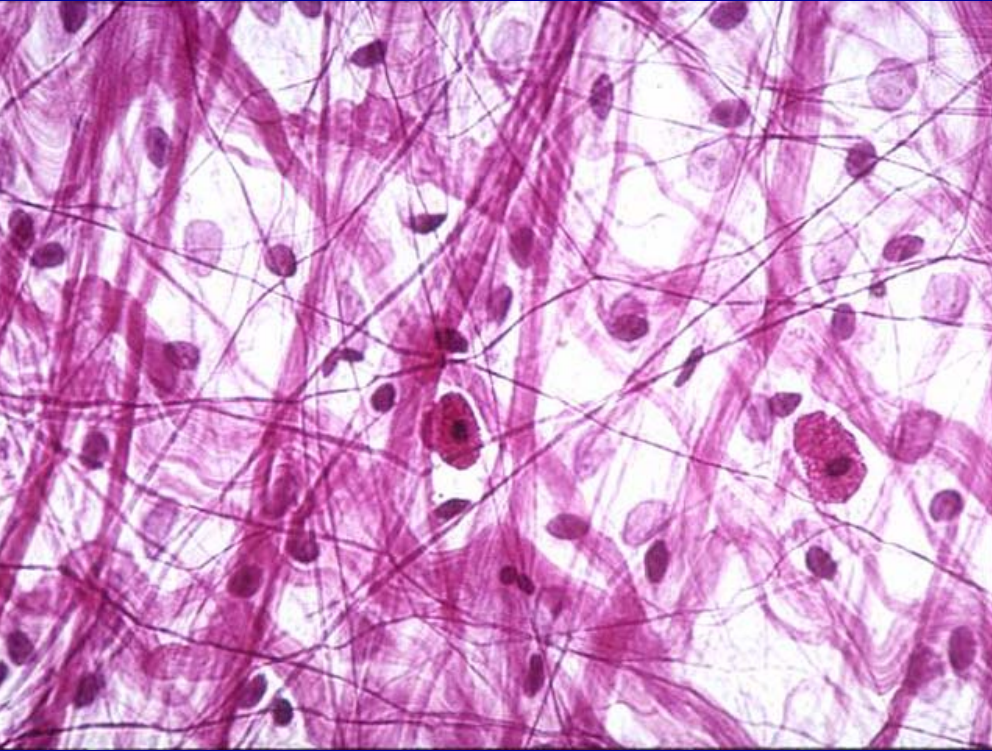
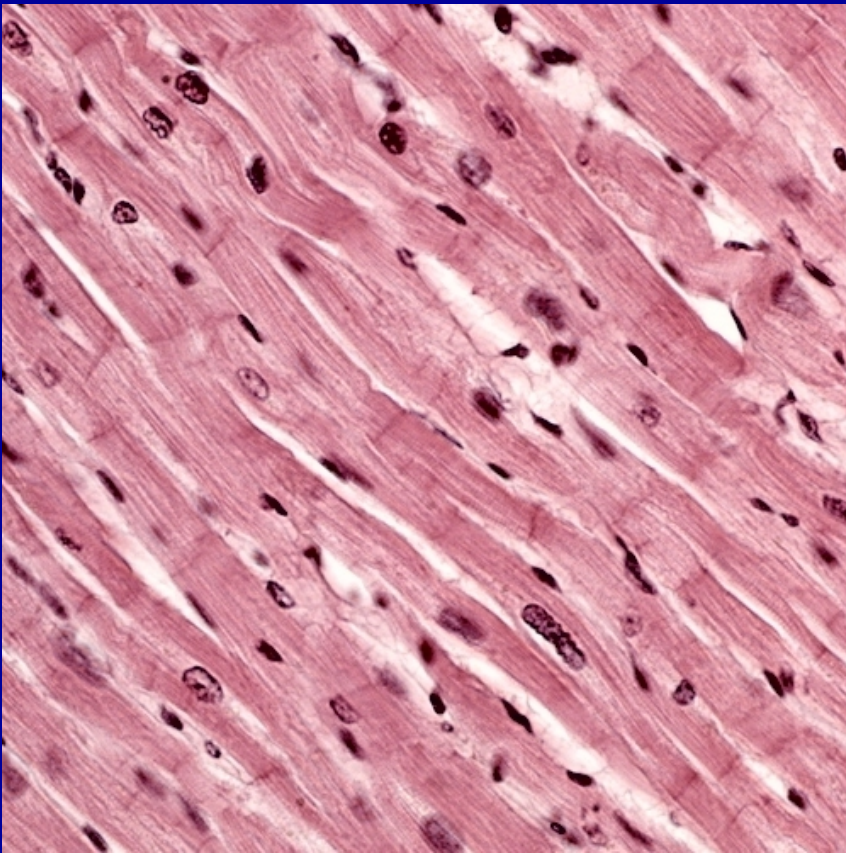


Connective Tissue



- Adds support and structure to the body
- Tendons, bone, cartilage, fat and blood
- What are some of the characteristics of the cells that make up connective tissue?

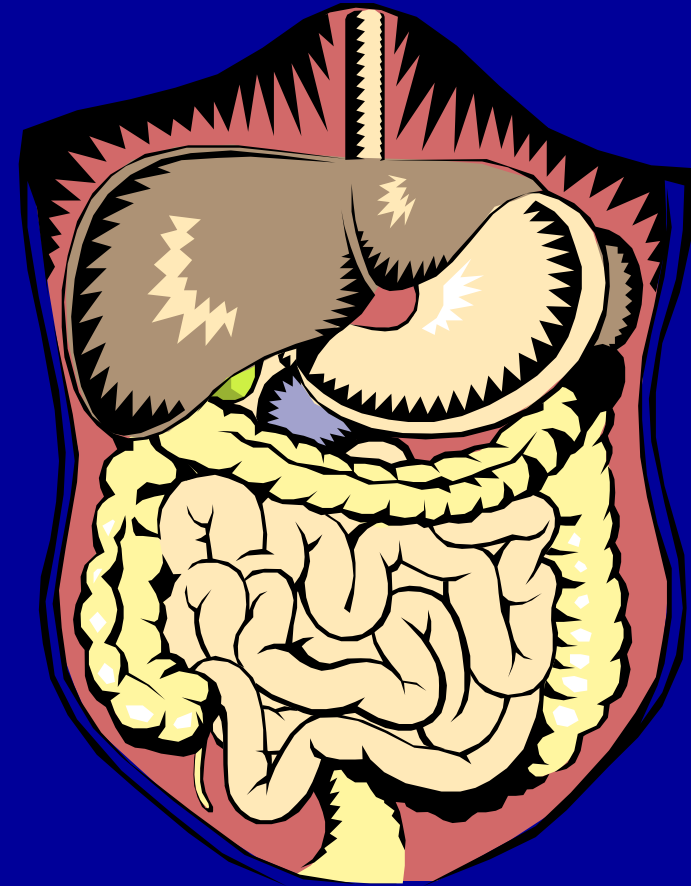
Muscle Tissue



- Contractile tissue
- Striated or smooth
- Voluntary or involuntary
- Biceps, heart, hamstring

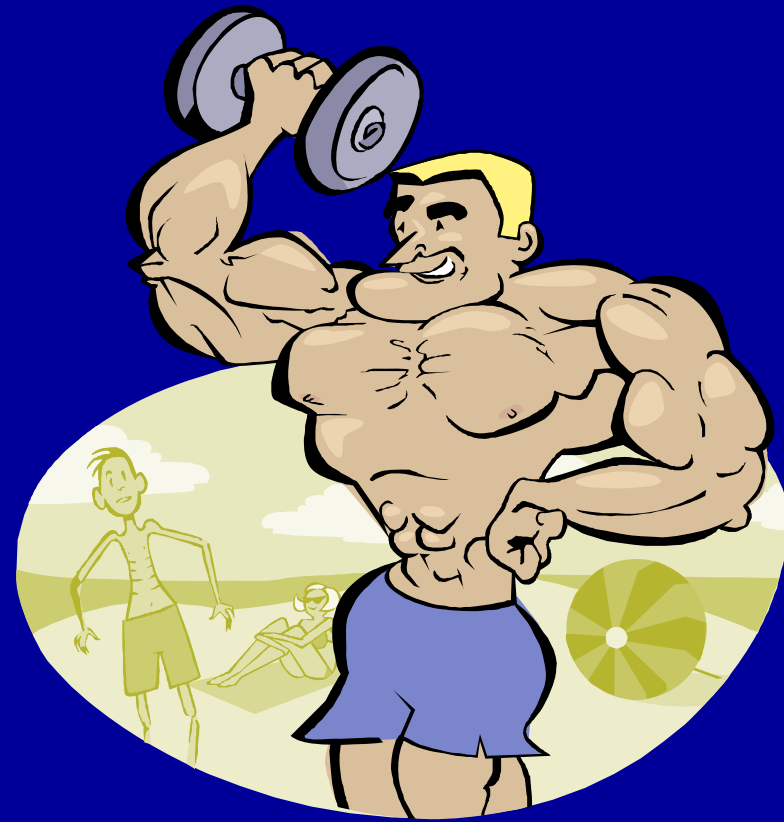
Smooth Muscle:

- Involved in involuntary contraction.
- Found in intestinal walls and in the arteries and veins
- You do not have to think about these movements... What would happen if you had to think about digestion and circulation?



Skeletal Muscle:

- Muscles that are attached to the bone and aid in movement
- These muscles move voluntarily
- Biceps, quadriceps, pectorals and abdomen



Epithelial Tissue



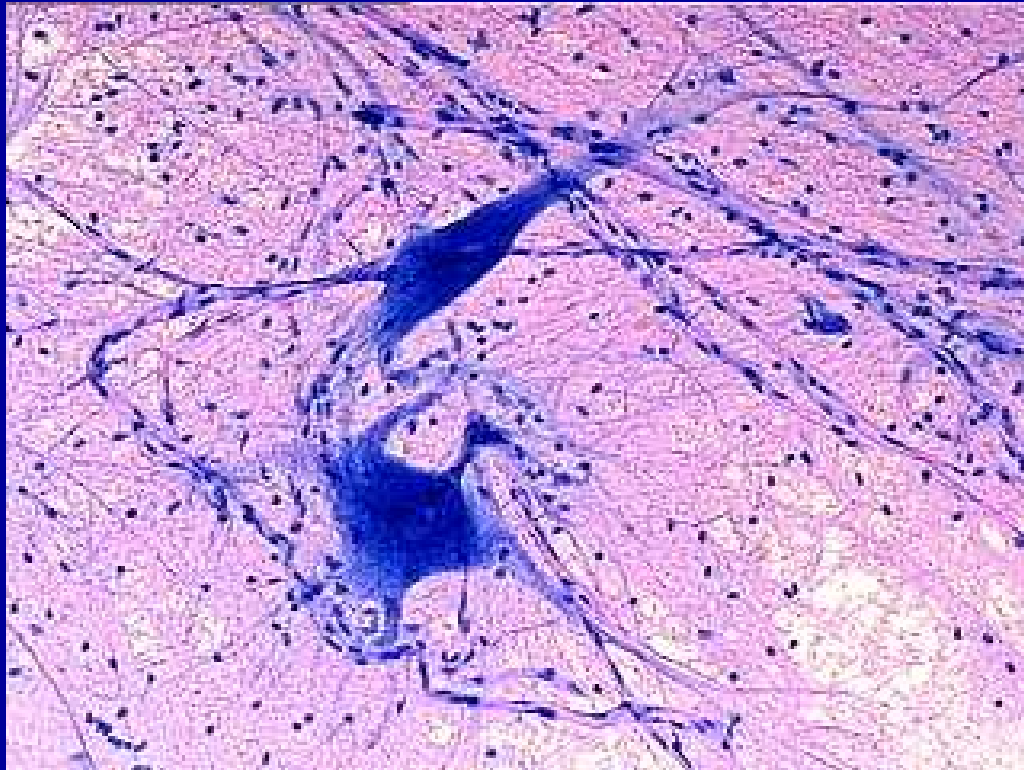
- Sheet like
- Acts as a lining and membrane over organs
- Skin, outer stomach

Functions of Epithelial Tissue:

- Protection - against injury, bacteria and from losing water
- Contains nerve endings so you can feel objects on your skin
- Contains glands that can secrete substances such as enzymes and sweat
- Epithelial cells in the small intestine can help absorb food



Nerve Tissue



- Conducts electrical signals throughout the body
- In brain, spinal cord and throughout the rest of the body

Fun Facts:

- Giraffes have a nerve that is 15 feet long extending from their head to their toes
- Nerves can move at speeds up to 390 feet per second
- There is a rare disorder called congenital insensitivity to pain with anhidrosis, or CIPA — a rare genetic disorder that makes a person unable to feel pain... Why might it be dangerous to not feel pain?