

BALTIMORE COUNTY PUBLIC SCHOOLS

DATE: July 14, 2009

TO: **BOARD OF EDUCATION**

FROM: Dr. Joe A. Hairston, Superintendent

SUBJECT: **CONSIDERATION OF THE PROPOSED BALTIMORE
COUNTY PUBLIC SCHOOLS' ORGANIZATION CHARTS
FOR 2009-2010**

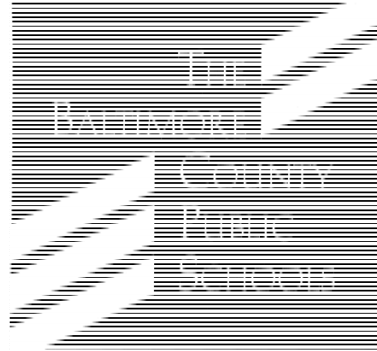
ORIGINATOR: Dr. Joe A. Hairston

**RESOURCE
PERSON(S):** Dr. Donald Peccia, Assistant Superintendent, Human Resources
Dr. Frances Allen, Manager, Personnel Services
Thomas Mallon, Position Management Officer
Robert Gibson, Analyst, Office of Position Management

RECOMMENDATION

In accordance with Policy 2310, organization charts have been prepared by the Superintendent of Schools for approval by the Board of Education.

Attachments – Organization Charts



ORGANIZATION CHARTS

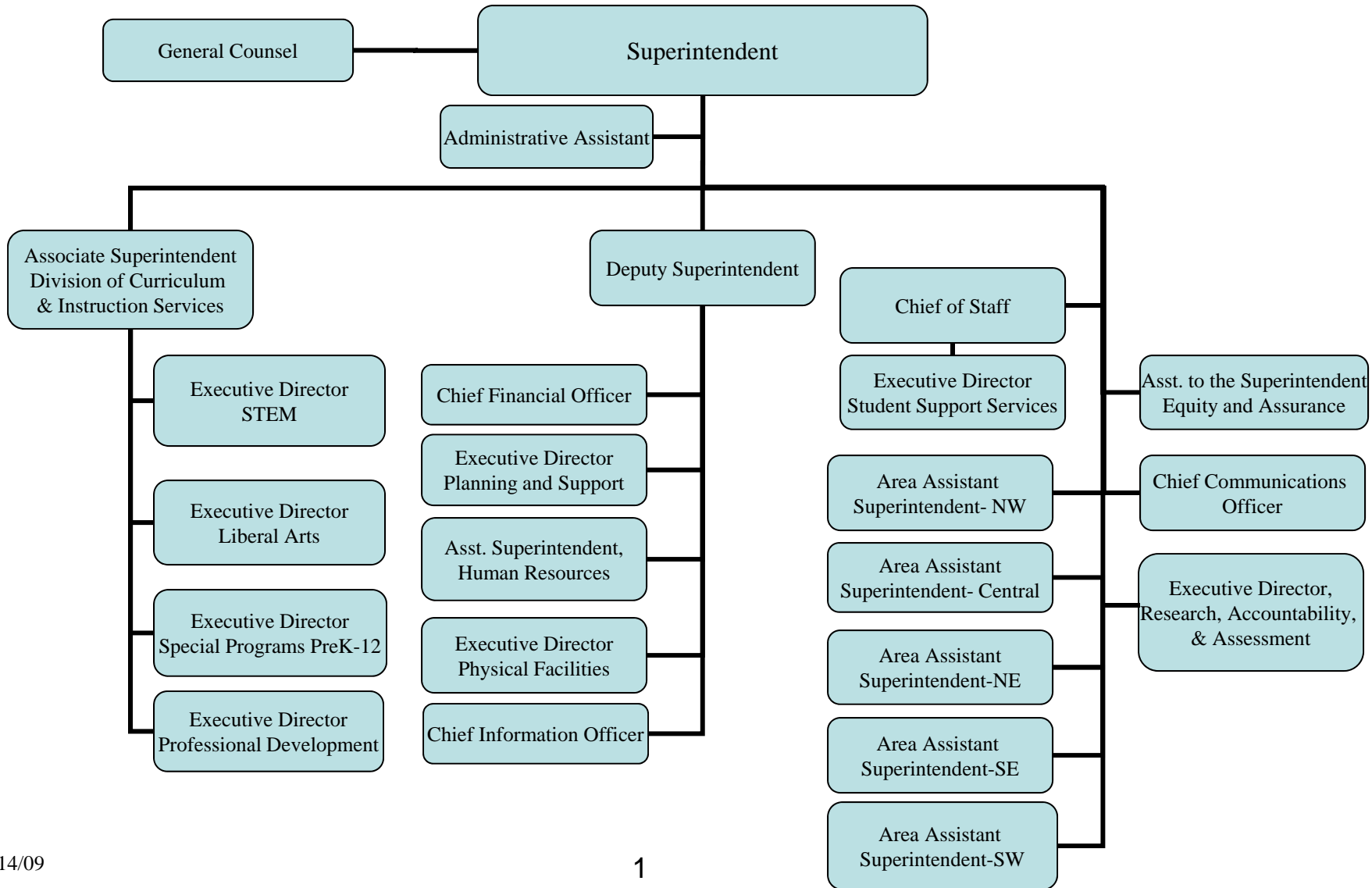
FY 2010

The Baltimore County Public Schools Organization Charts

Table of Contents

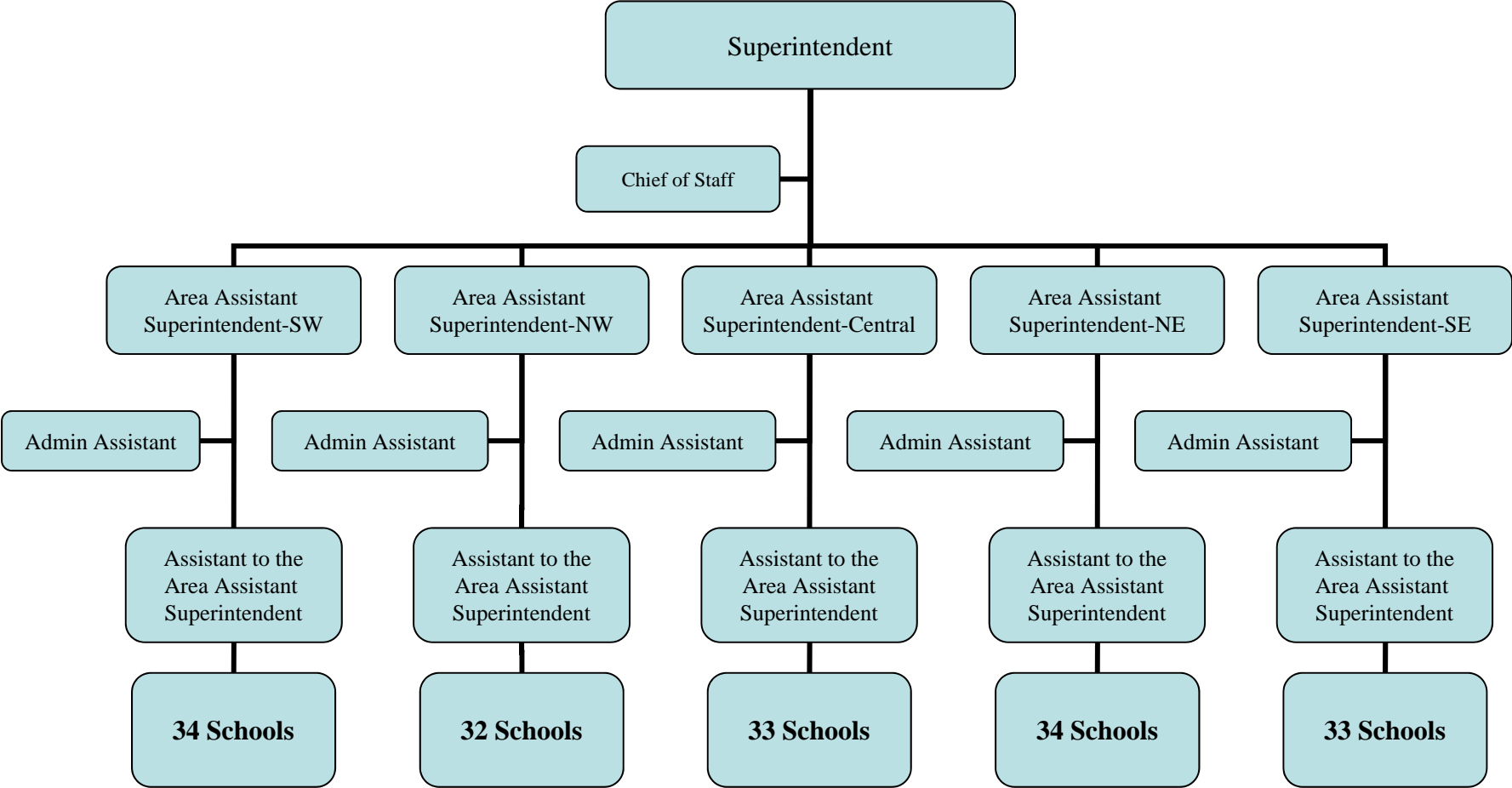
Superintendent of Schools	Page 1
Area Assistant Superintendents	Page 2
Department of Research, Accountability, and Assessment	Page 3
Student Support Services.....	Page 4
Associate Superintendent, Division of Curriculum and Instruction	Page 5
Executive Director, STEM.....	Page 6
Executive Director, Liberal Arts.....	Page 7
Special Programs, PreK-12	Page 8
Department of Professional Development	Page 9
Division of Business Services	Page 10
Department of Fiscal Services	Page 11
Department of Planning and Support Operations	Page 12
Department of Human Resources	Page 13
Department of Physical Facilities.....	Page 14
Department of Technology	Page 15
The Baltimore County Public Schools	Page 16
Office of Internal Audit.....	Page 17

Superintendent of Schools

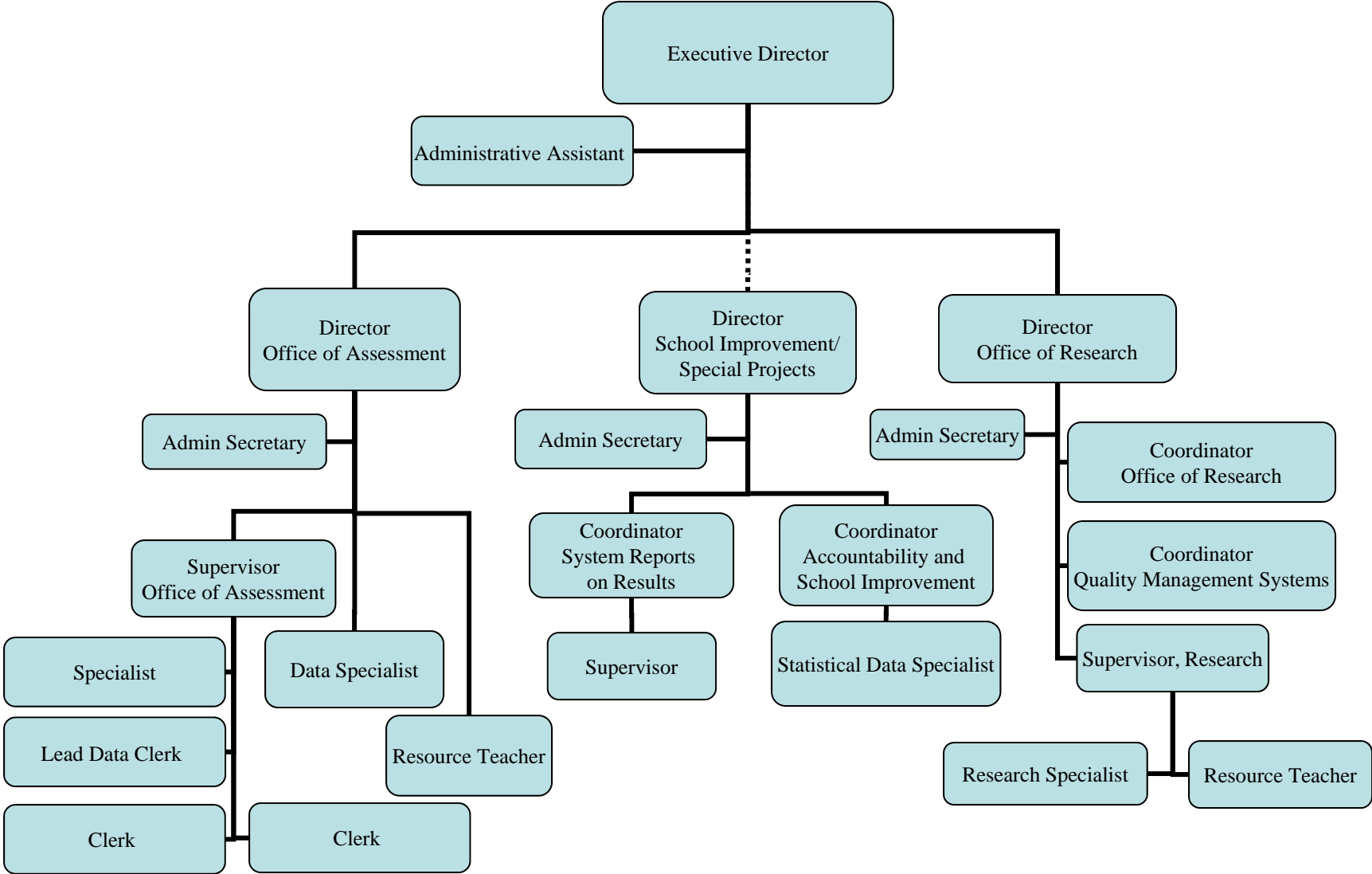


Superintendent of Schools

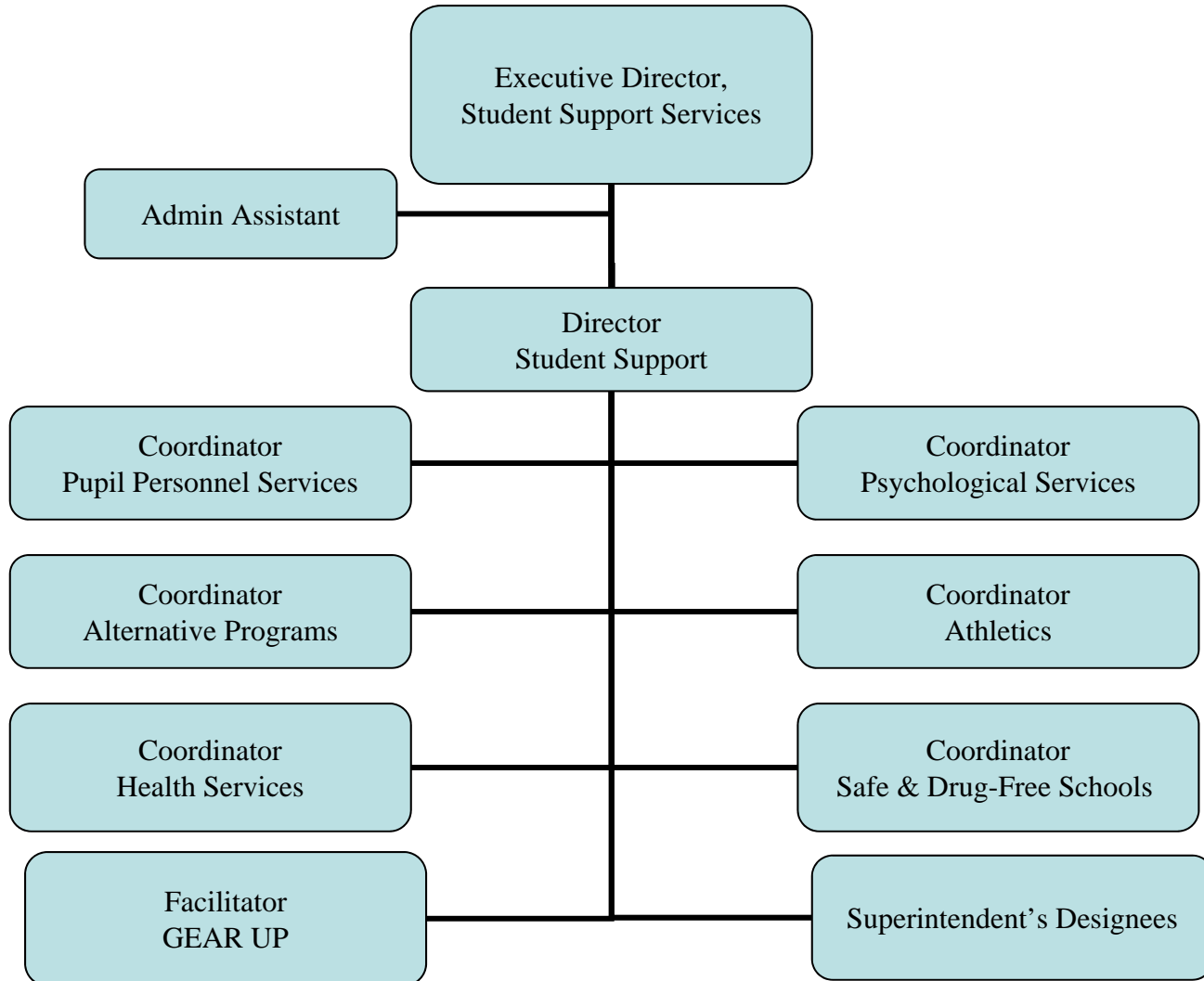
Area Assistant Superintendents



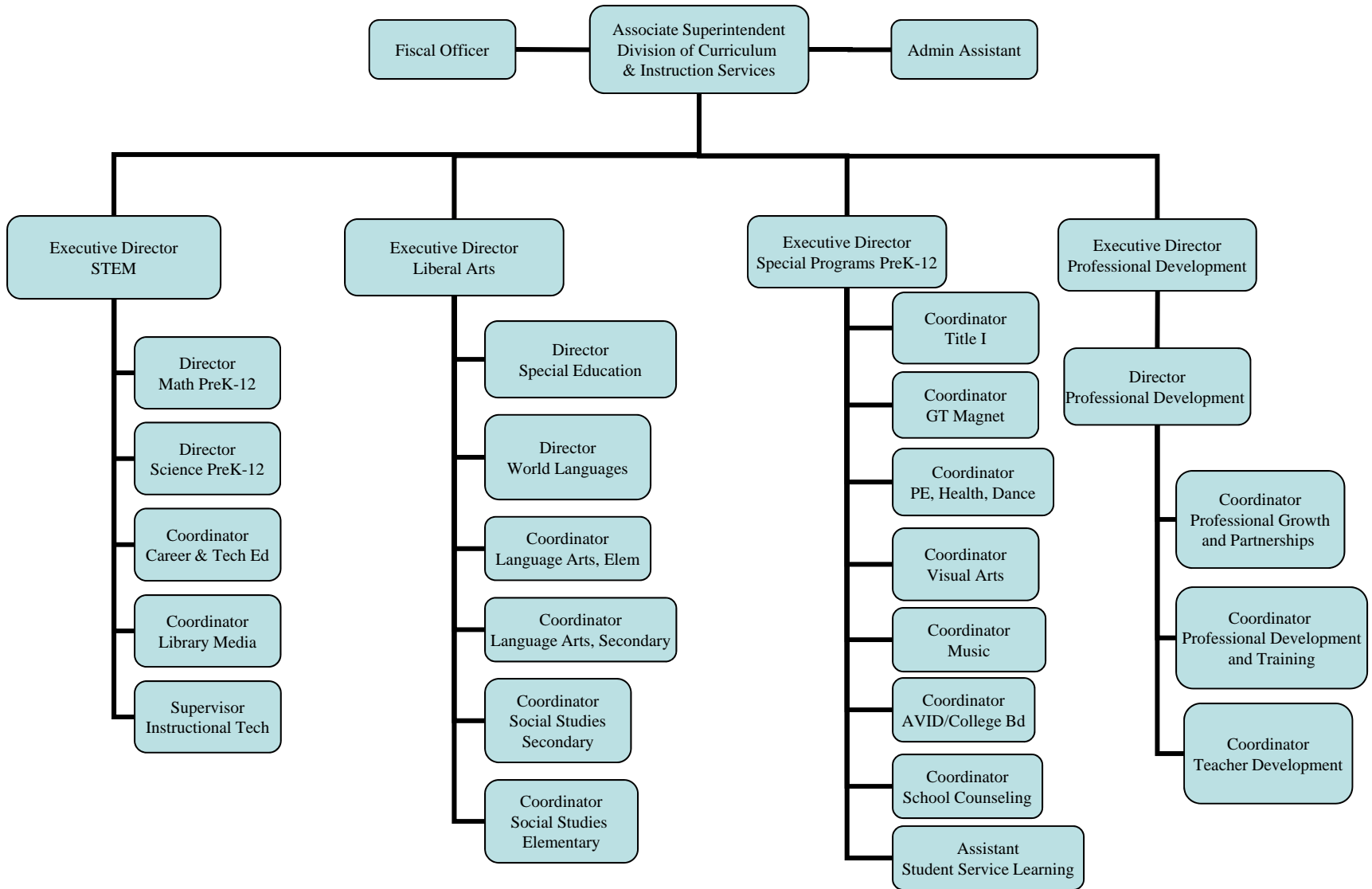
Department of Research, Accountability, and Assessment



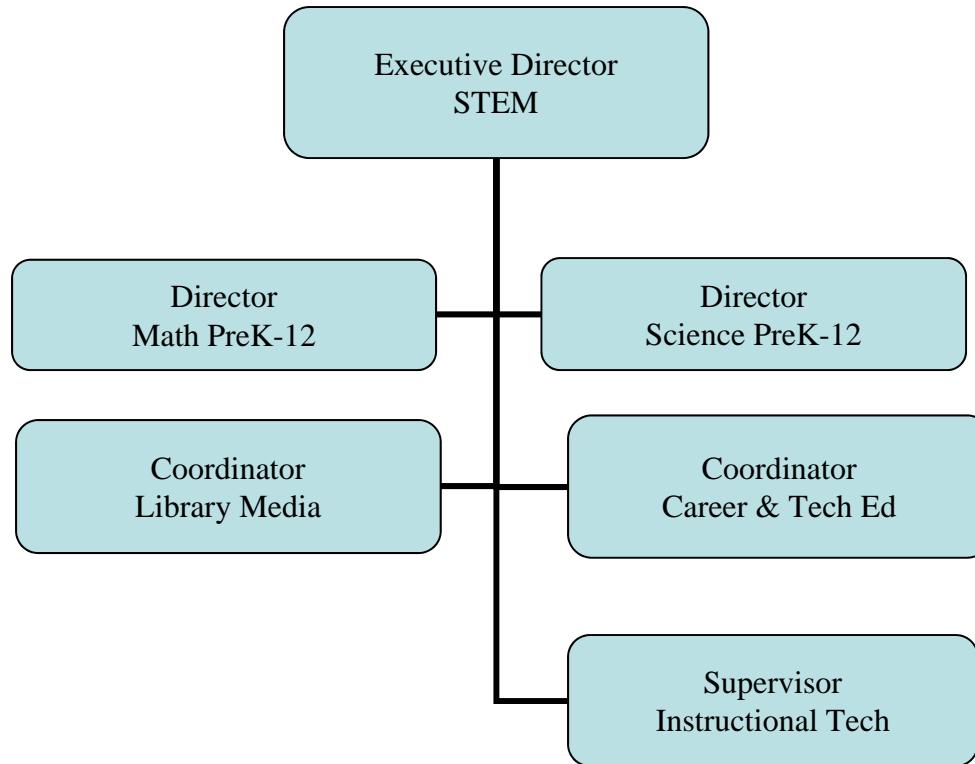
Department of Student Support Services



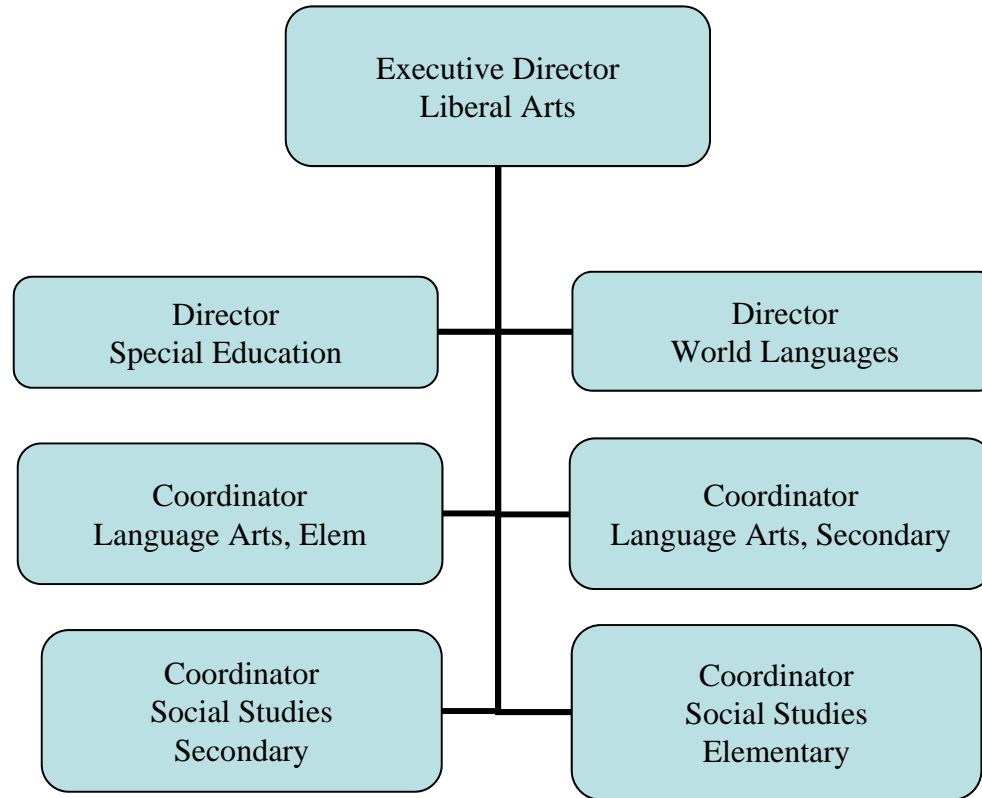
Division of Curriculum and Instruction Services



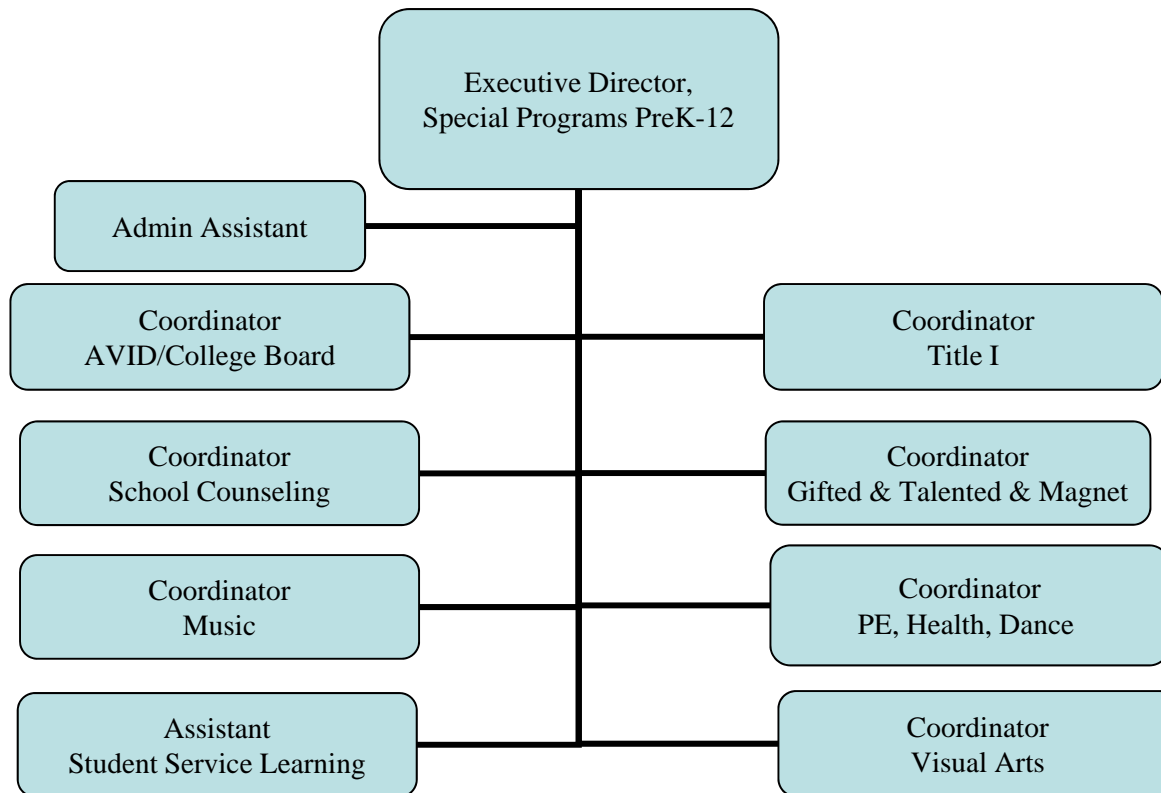
Executive Director - STEM



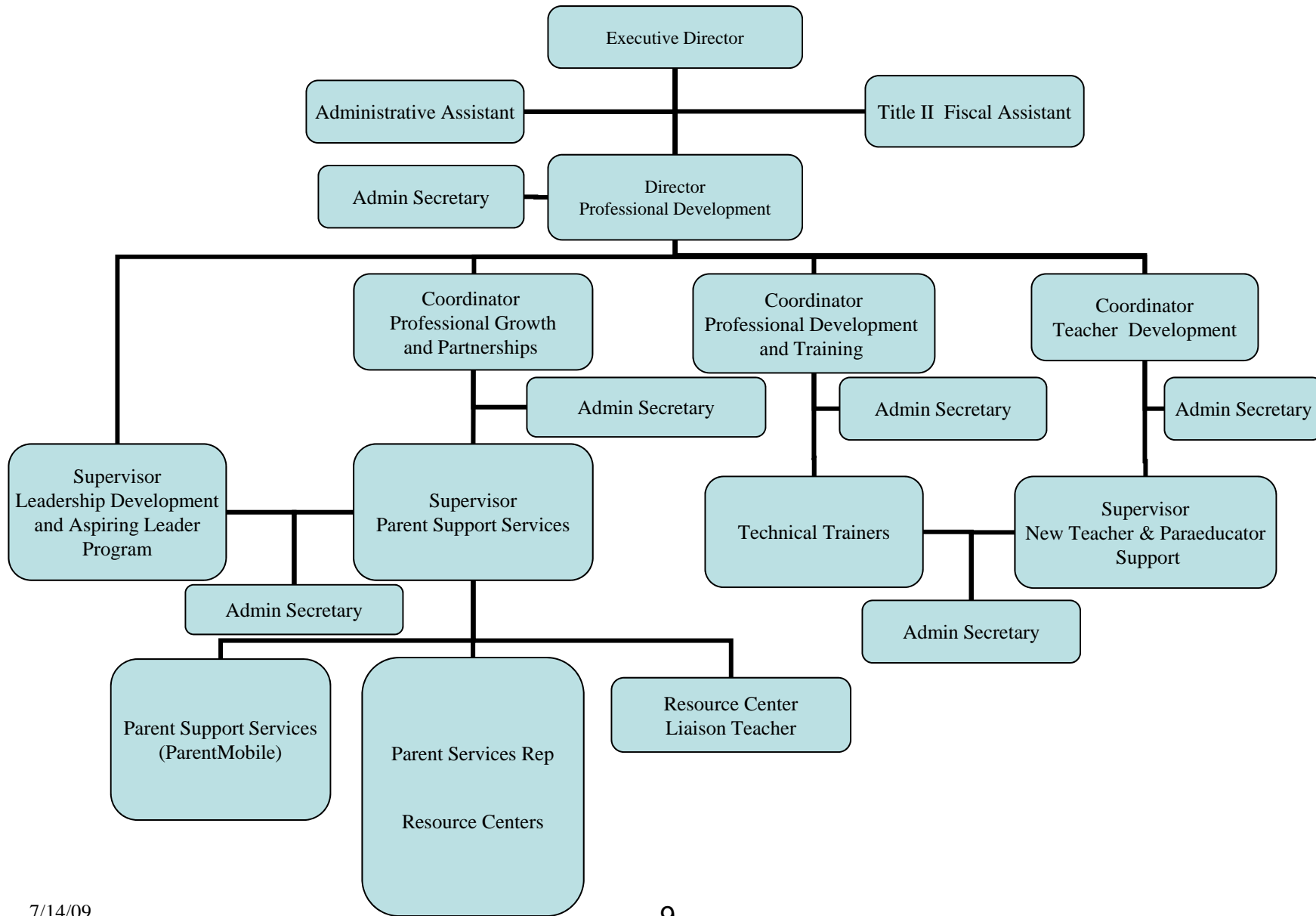
Executive Director – Liberal Arts



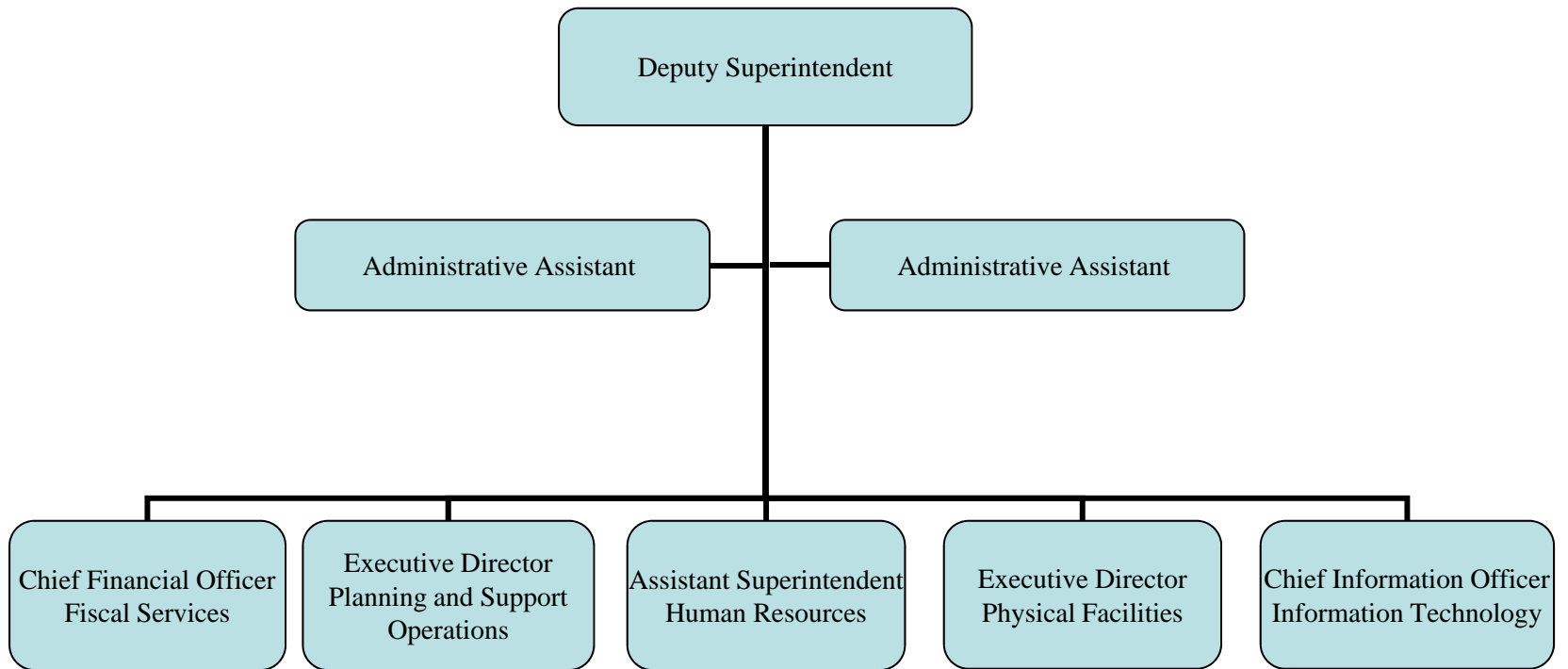
Department of Special Programs PreK-12



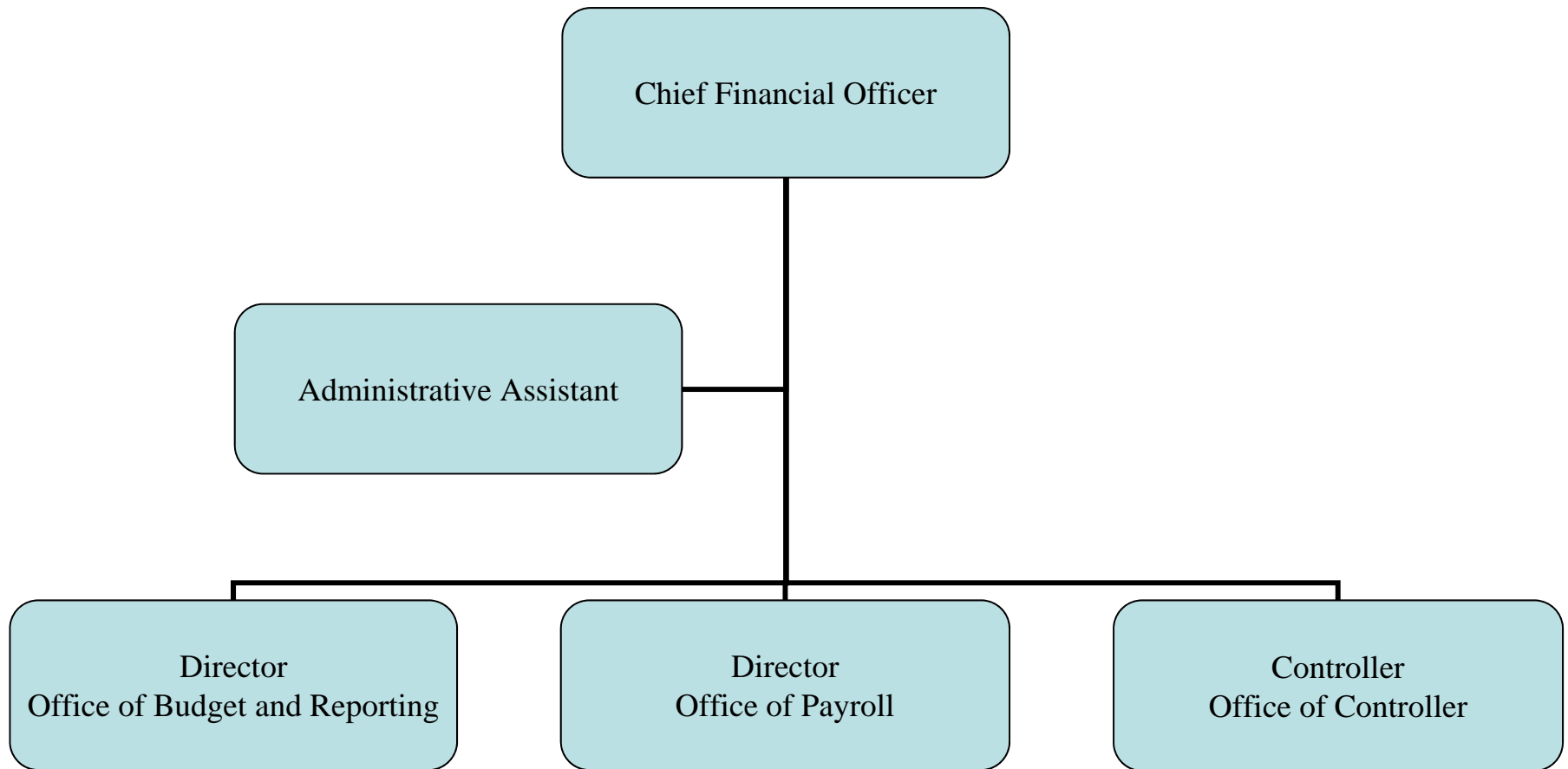
Department of Professional Development



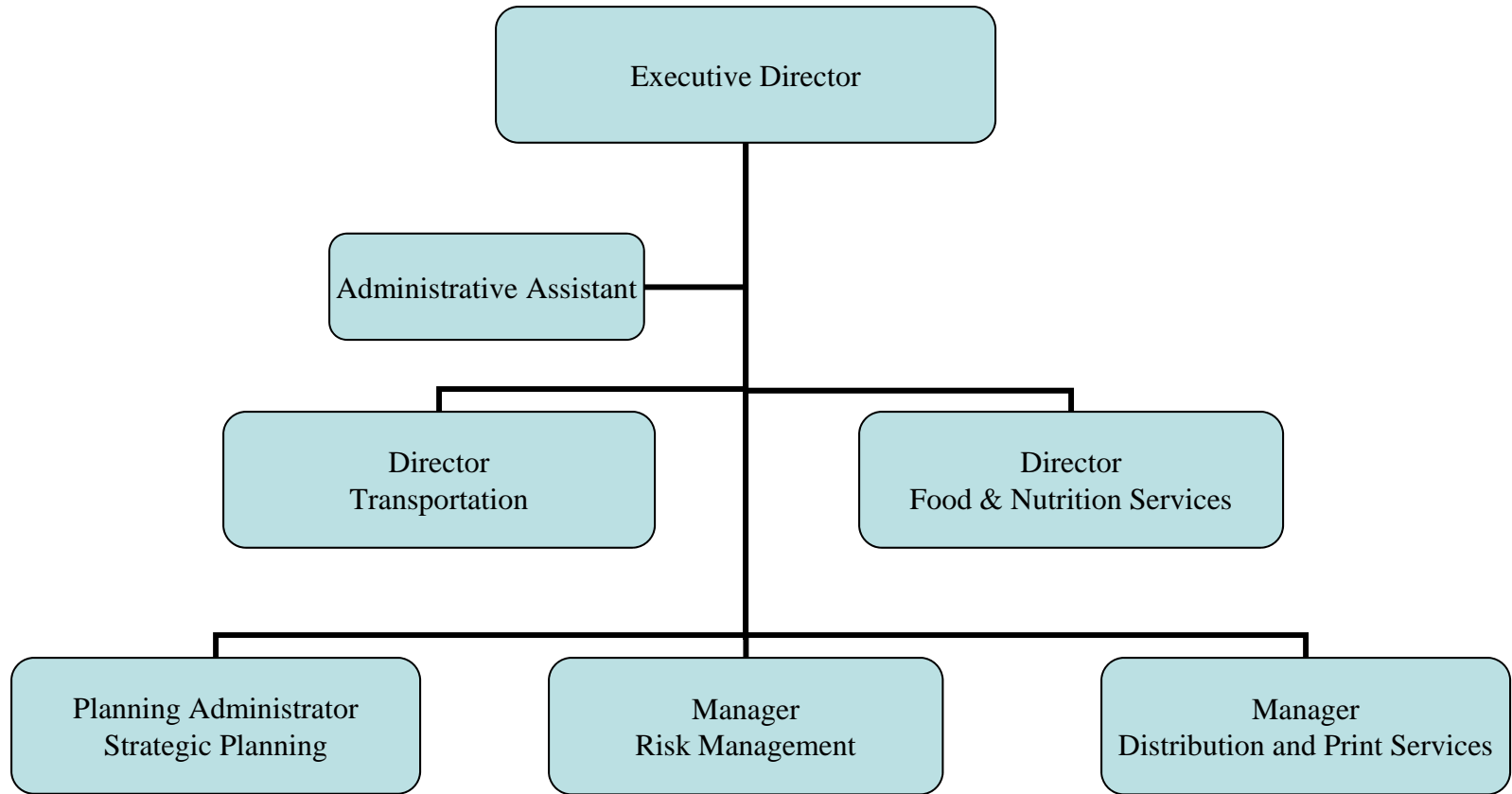
Division of Business Services



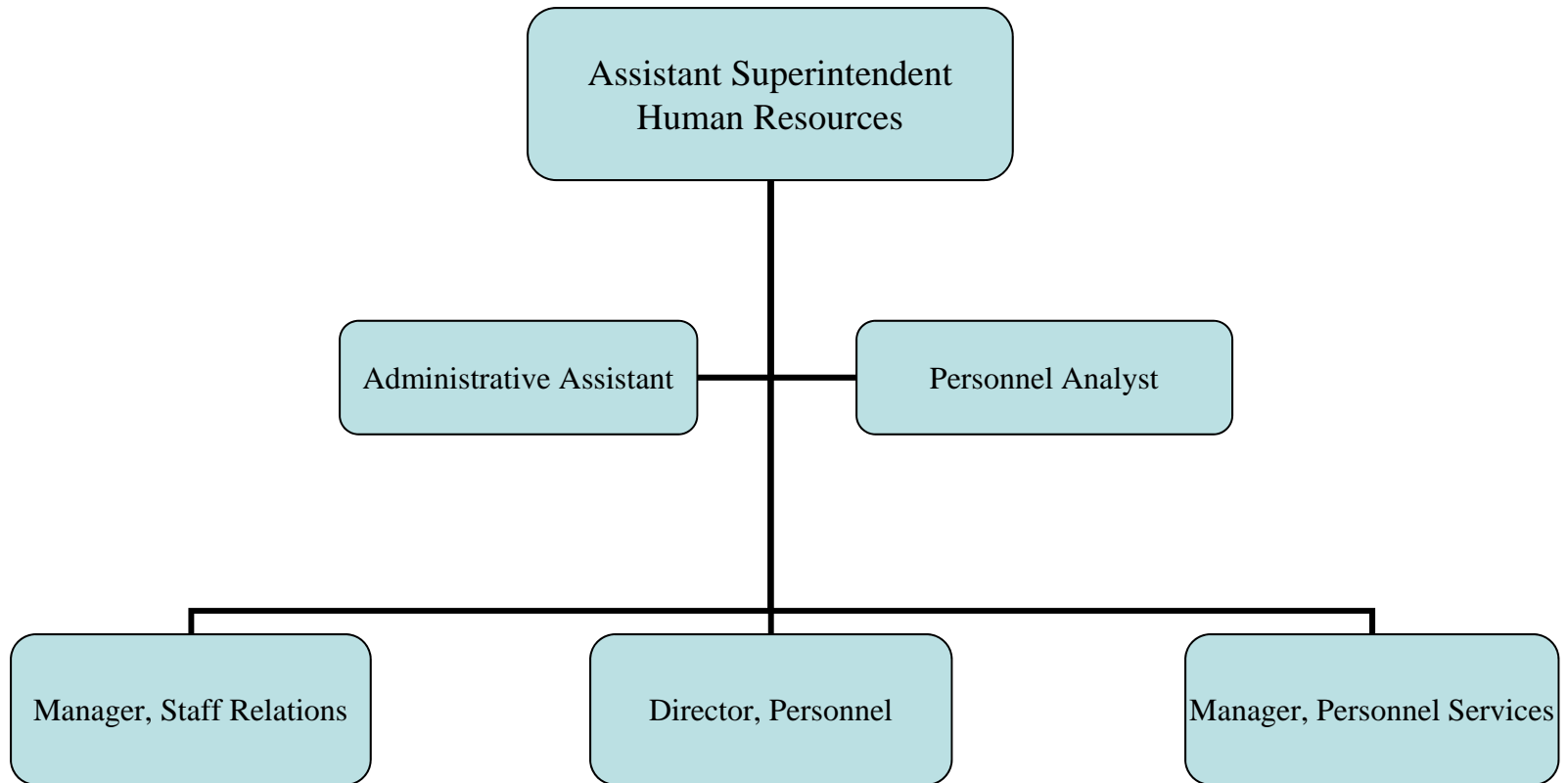
Department of Fiscal Services



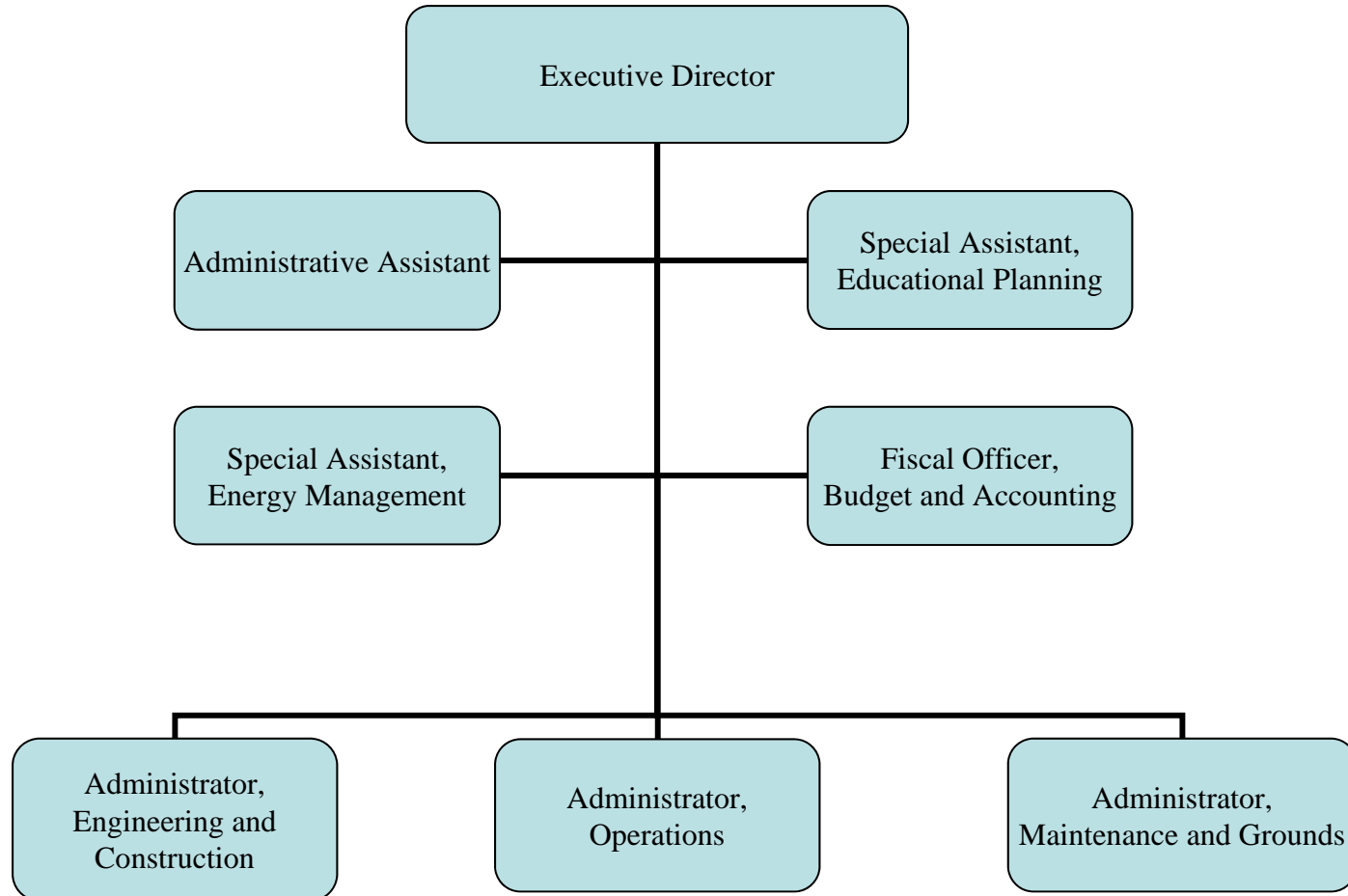
Department of Planning and Support Operations



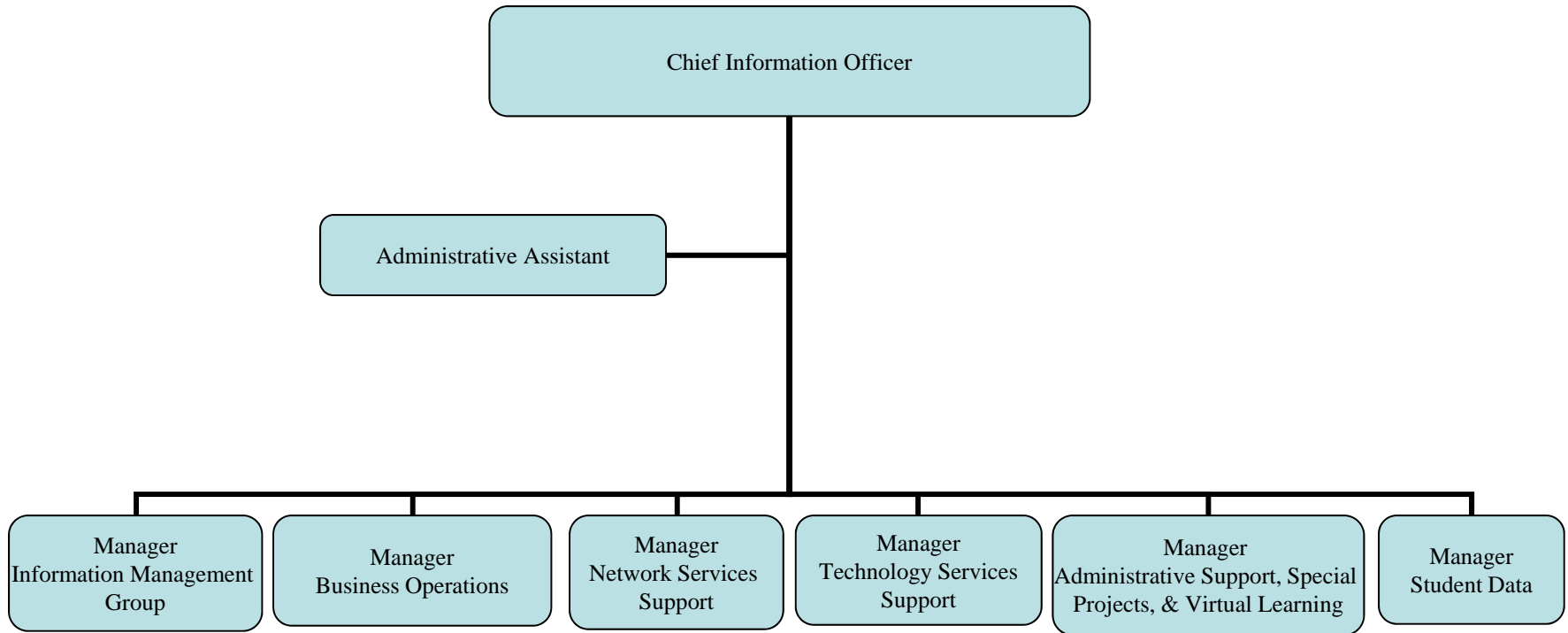
Department of Human Resources



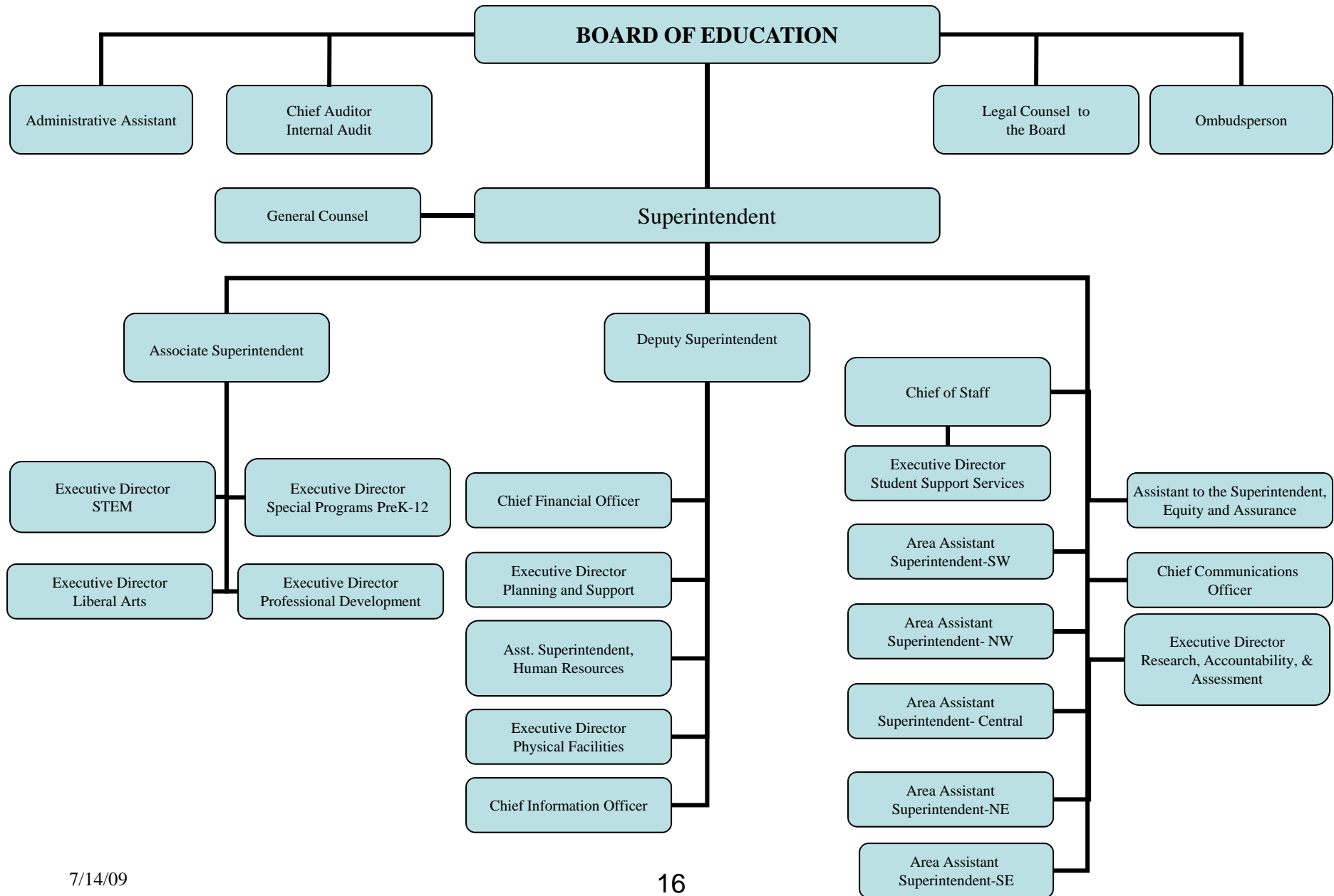
Department of Physical Facilities



Department of Technology



The Baltimore County Public Schools



The Baltimore County Public Schools Office of Internal Audit

