

**BALTIMORE COUNTY PUBLIC SCHOOLS**

**DATE:** May 13, 2003  
**TO:** BOARD OF EDUCATION  
**FROM:** Dr. J. Hairston, Superintendent  
**SUBJECT:** Overcrowding Relief for Southwest Area Elementary Schools  
**ORIGINATOR:** J. Robert Haines, Deputy Superintendent

**RESOURCE**  
**PERSON(S):** Rita Fromm, Executive Director, Planning and Support Operations

**RECOMMENDATION**

That the Board of Education accept and approve information supporting staff's proposals regarding programs relocations and adjustments at Dogwood Elementary, Edmondson Heights Elementary, and Featherbed Lane Primary and Intermediate Schools.

**Background Information: An action plan for relieving overcrowding in various elementary schools was approved by Executive Leadership on March 3, 2003.**

Estimated Operating Funds Fiscal Impact: \$ 35,000 for FY 2004  
Possible Funding Source: Department of Facilities and Office of Special Education

JRH/dd

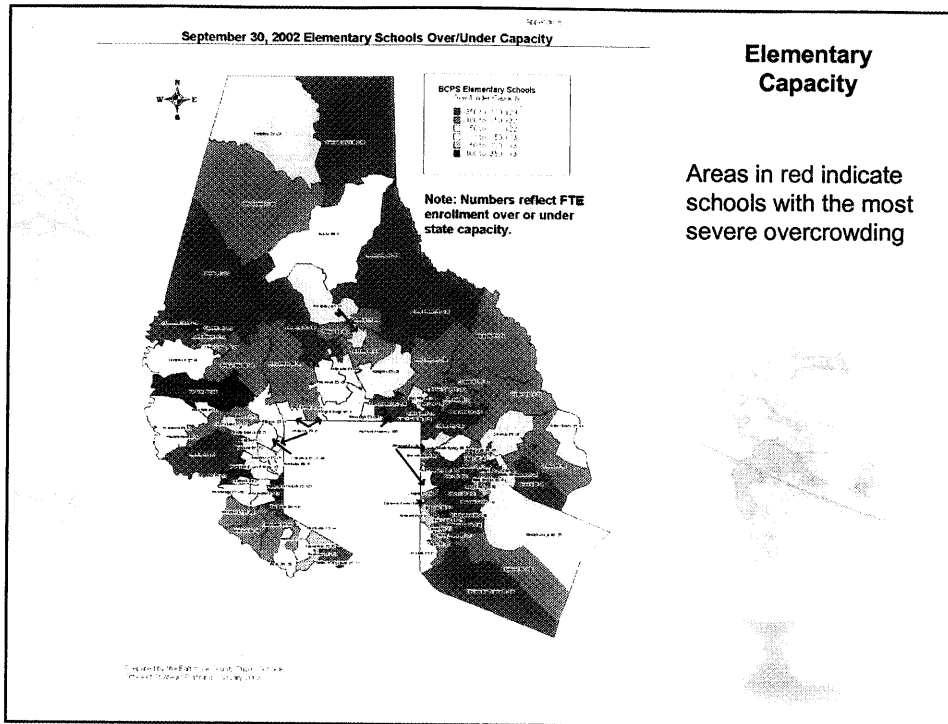
**Baltimore County Public Schools  
Relief Plan – Southwest Area**



Prepared by:  
Office of Strategic Planning  
In cooperation with Executive Directors  
of Schools

**Introduction**

- The Office of Strategic Planning reviewed capacity and enrollment information with the Southwest Area Executive Director of Schools.
- Relief was requested for:
  - Dogwood ES (115 students over capacity)
  - Edmondson Heights ES (103 students over capacity)
  - Featherbed Lane ES (43 students under capacity)



### Historical and Projected Enrollments

School	1998	1999	2000	2001	2002
Dogwood ES	0	0	542	607	625
Edmondson Heights ES	664	683	696	660	740
Featherbed Lane Primary ES	405	415	437	436	409
Featherbed Lane Intermediate ES	375	388	380	384	339
Westowne ES	480	474	456	453	458
Winfield ES	667	648	448	431	424

SW AREA	STATE CAPACITY	Without Changes			
		2003	2004	2005	2006
Dogwood ES	491	650	662	675	667
Edmondson Heights ES	614	771	761	763	771
Featherbed Lane Primary	758	340	380	394	398
Featherbed Lane Intermediate		425	465	483	488
Westowne ES	524	452	463	488	490
Winfield ES	556	425	433	439	434
		3063	3164	3242	3248

SW AREA	STATE CAPACITY	With Changes			
		2003	2004	2005	2006
Dogwood ES	491	626	638	651	643
Edmondson Heights ES	614	771	761	763	771
Featherbed Lane ES	758	765	845	877	886
Westowne ES	524	452	463	488	490
Winfield ES	556	449	457	463	458
		3063	3164	3242	3248

**Notes**  
 All projections reflect a September 30 date of given year  
 All projections are in total enrollment, not FTE  
 Capacity does not reflect adjustments to Dogwood ES and Winfield ES based on program movement.  
 Capacity also does not reflect additional seats provided by relocatable units

### Southwest Area Enrollment Data

School (* = Full-Day K)	Area	9/30/02 Enr.	9/30/02 FTE Enr.	State Cap.	Number Students +/- St. Cap.	% of State Capacity	% Over/ Under St. Cap.
Arbutus	SW	418	379	431	-62	87.9%	-12.1%
Balto. Highlands	SW *	580	550	663	-113	83.0%	-17.0%
Catonsville	SW	397	365	459	-94	79.5%	-20.5%
Chadwick	SW *	486	463	436	27	106.2%	6.2%
Dogwood	SW *	625	606	491	115	123.4%	23.4%
Edmondson Hgts	SW	740	717	614	103	116.6%	16.8%
Featherbed Lane	SW *	748	715	756	-43	94.3%	-5.7%
Halethorpe	SW	420	367	411	-44	89.3%	-10.7%
Heberville	SW *	550	526	576	-60	91.3%	-8.7%
Hillicrest	SW	646	586	646	-68	91.0%	-9.0%
Johnnycake	SW *	648	621	606	13	102.1%	2.1%
Lansdowne	SW *	439	419	339	80	123.6%	23.6%
Powhatan	SW *	358	341	349	-8	97.7%	-2.3%
Relay	SW	457	420	459	-39	91.6%	-8.5%
Riverview	SW *	543	514	633	-119	81.2%	-18.8%
Westchester	SW	487	448	516	-68	86.6%	-13.2%
Wstowne	SW	458	400	524	-124	76.3%	-23.7%
Winfield	SW *	424	404	556	-152	72.7%	-27.3%
Woodbridge	SW	456	409	459	-50	89.1%	-10.9%
Woodmoor	SW *	673	642	673	-31	95.4%	-4.6%
<b>Elementary Totals</b>		<b>10553</b>	<b>9894</b>	<b>10601</b>	<b>-707</b>	<b>93.3%</b>	<b>-6.7%</b>

### Dogwood Elementary School

#### Existing Conditions

- Dogwood ES opened in 2000 with an enrollment of 542, over capacity by 18 students. In 2002, Dogwood ES has an enrollment of 625 students, placing them over capacity by 115 students.
- Dogwood ED Program currently serves 12 Intermediate and 12 Primary ED students (24 total).
- Dogwood ES has 6 relocatable units
- Winfield ES has 152 available seats and is the closest school to relieve overcrowding at Dogwood ES. Winfield ES has 4 available classrooms.

#### Recommendations

- Transfer the Dogwood ED program to Winfield ES
  - Winfield ES has 4 available classrooms to accept the special education ED component from Dogwood ES
  - Dogwood ES would gain 30 seats. Capacity of Dogwood ES would increase from 491 seats to 521 seats
  - This proposal was developed in concert with the Executive Director of Schools, Special Education Office, Strategic Planning Office and Elementary Education Office

## Edmondson Heights Elementary School



### Existing Conditions

- In 2002, Edmondson Heights ES converted from ½ day kindergarten to full day kindergarten.
- Kindergarten enrollment jumped from 66 children (approx 3 ½ day classes) on 9/30/2001 to 115 children (approx 5 full day classes) on 9/30/2002
- Edmondson Heights has 2 relocatable units, with 3 more scheduled to be added in Spring 2003

### Recommendations

- Cap 2003/2004 kindergarten enrollment at 2002/2003 levels (110 students or 5 classes).
- Any additional kindergarten students would be annexed to Westowne ES, which was under capacity on 9/30/2002 by 124 students.
- The additional 3 relocatable units and cap will allow Edmondson Heights ES Library and Art programs to return their designated classrooms.

## Featherbed Lane Primary and Intermediate Elementary Schools

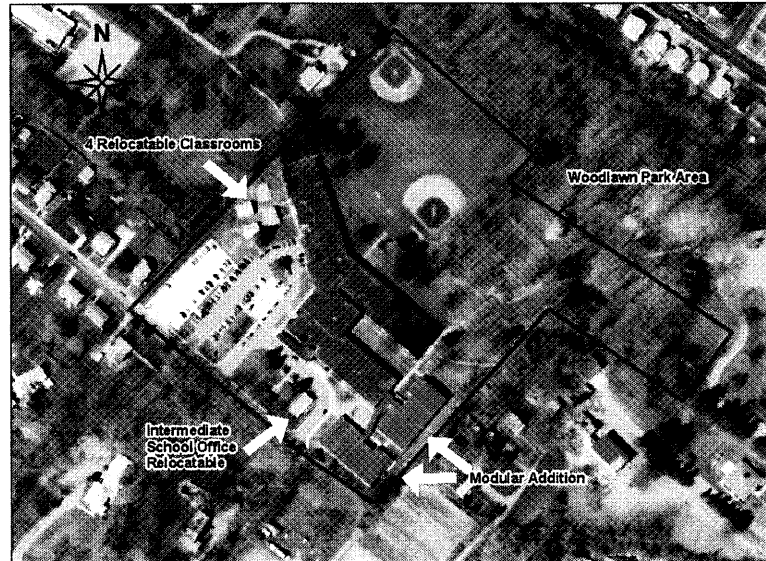
### Existing Conditions

- In 2002, Featherbed Lane Primary and Intermediate ES had an enrollment of 740, placing them 43 students under capacity
- Community concerns include:
  - Student achievement
  - Vehicular and pedestrian traffic congestion
  - Student traffic flow through campus
  - Adequacy of cover for students during inclement weather
- Site has 2 modular additions which house the Intermediate grades
- Site has 6 relocatable units:



- 3 are used as classrooms
- 1 is used to house resource staff
- 2 (1 double) is used as the Intermediate Office

## BCPS Featherbed Lane Primary/Intermediate Elementary School Site



Prepared by the Baltimore County Public Schools  
Office of Strategic Planning, November 2002

Orthophotography from 2000

### Featherbed Lane Primary and Intermediate Elementary Schools

#### Academic Recommendations

- Create one school and bring program implementation in line with other Baltimore County Public Elementary Schools
- Implement the STEM Academy (NSF) to increase academic rigor and increase student achievement
- Reorganization of school around one principal

#### Long-Term

- Featherbed Lane ES is scheduled for Year 2 (2004/2005) implementation as a STEM Academy with the National Science Foundation Grant. This grant places a strong emphasis on Math & Science skills
- Featherbed Lane ES will be one of three BCPS Elementary Schools participating in this partnership with the University of Maryland Baltimore County

Featherbed Lane Primary School  
Featherbed Lane Intermediate School

	Featherbed Lane Primary	Featherbed Lane Intermediate
# of Regular Classrooms (37)	21 classrooms	16 classrooms
# of Classrooms used for Special Education	-2 classrooms <i>1 primary functional 1 non-categorical</i>	-0 classrooms <i>Inclusive Classroom Setting</i>
# of Classrooms used for Pre-K	-2 classrooms	NA
# of Classrooms used for Art	-0 classrooms <i>Art on a Cart</i>	-0 classrooms <i>Art on a Cart</i>
# of Classrooms used for Music	-0 classrooms <i>Share relocatable on a rotating bases. Music on a cart</i>	-0 classrooms <i>Share relocatable on a rotating bases Music on a cart</i>
<b>Classrooms Available by Individual School</b>	<b>17-classrooms</b>	<b>16 classrooms</b>
<b>Total for School - 33 Classrooms</b>		

Featherbed Lane Primary			
Class	# of Students	Ratio (# of students divided by)	# of Classrooms
Kindergarten	112	21.9	(5.11) 5
Grades 1/2	222	21.9	(10.13) 10
Featherbed Lane Intermediate			
Grades 3/5	316	23.9	(13.22) 13
<b>Total of Classrooms Needed</b>			<b>28</b>

Classroom Count
<b>38 Classrooms Total</b>
<i>(21 FE Primary + 16 FE Intermediate - 1 relocatable = 36)</i>
<b>28 regular classrooms</b>
2 spec. ed classrooms
2 PreK classrooms
1 art classroom
1 music classroom
<b>34 classrooms (+4)</b>

*\*Intermediate School Office, which is currently in a relocatable, may be used as a classroom.*

Southwest

May 6, 2003

### Featherbed Lane Primary and Intermediate Elementary Schools

#### Physical Recommendations

#### Site Improvements

- Drop-off loop
  - Construct parent drop-off loop at rear of school to improve traffic flow and emergency access from Woodlawn Drive. This will significantly ease traffic congestion on Richardson Road.
  - This project is being funded by Baltimore County Public Schools with an estimated cost of \$309,000. Project completion is currently planned for late November 2003
- Canopy at the drop-off loop
  - In response to inclement weather concerns, a canopy will be placed at the new drop-off loop to provide cover to the closest school entrance
  - This project is also being funded by Baltimore County Public Schools with an estimated cost of \$150,000. Project completion should coincide with completion of drop-off loop.

## Proposed Drop-off Loop and Canopy for Featherbed Lane Elementary School



Prepared by the Baltimore County Public Schools  
Office of Strategic Planning, May 2003

Orthophotography from 2000

Office	Interaction	Date/Time	Purpose
Office of Strategic Planning Staff (Ghassan, Chris, Pam)	Visited Featherbed Lane Primary/Intermediate School and met with principals of New Town, Franklin, and Meeting with Kathleen McMahon and Gwen Grant	10/15/02 8:30 a.m.	The purpose was to view first-hand the use of the facility and to determine how space was being used to deliver the instructional program and services.
Office of Strategic Planning Staff (Ghassan, Chris, Pam)	Meeting with Kathleen McMahon and Gwen Grant	10/31/02 12:00 p.m.	The purpose was to discuss our observations at Featherbed Lane Primary/Intermediate School and to discuss the advantages/disadvantages of the dual school concept.
Executive Director of Schools, SW Area, and Office of Strategic Planning Staff	Meeting	10/31/02 1:00 p.m.	The purpose was to discuss our observations at Featherbed Lane Primary/Intermediate School and to make plans to do a comprehensive study of the facility and its needs for future presentation.
Office of Strategic Planning Staff (Ghassan, Chris)	Visited Featherbed Lane Primary/Intermediate School	12/20/02 10:00 a.m.	The purpose was to get input from concerned staff and PTA members relative to their perceptions of Featherbed Lane's needs.
Office of Strategic Planning Staff (Ghassan, Chris)	Visited Featherbed Lane Primary/Intermediate School	1/9/03	The purpose was to share data on students served by Featherbed Lane and to continue the dialogue on possible strategies for meeting the school's needs.
Office of Strategic Planning Staff (Ghassan, Chris, Pam)	Visited Dogwood Elementary and met with Karen Cortel	1/10/03 9:00 a.m.	The purpose of the visit was to discuss with the principal the degree of overcrowding in her school and the impact of the SED program and students from group homes.
Office of Strategic Planning Staff (Ghassan, Chris, Pam)	Visited Edmondson Heights Elementary and toured the building with the assistant principal	1/10/03 10:00 a.m.	The purpose was to view first-hand the use of the available space at the school and to determine the impact of the increased size of the kindergarten on this facility.
Office of Strategic Planning Staff (Ghassan, Chris)	Visited Featherbed Lane Primary/Intermediate School and met with Yaelin Stokes	1/10/03 1:00 a.m.	
Office of Strategic Planning Staff (Ghassan, Chris, Pam)	Visited Welford Elementary and met with principal Elliott Burgess	1/14/03 9:00 a.m.	The purpose was to view first-hand the use of the available space at the school and to determine if the school could accommodate an SED program.
Office of Strategic Planning Staff (Ghassan, Chris, Pam)	Joined Dr. Hamilton, Dr. Milbourne, and Ms. Fromm at SW Area Ed. Advisory Council Meeting at Woodmoor El.	1/15/03 7:00 p.m.	Dr. Hamilton addressed the Area Advisory Council and responded to citizens' concerns related to needs of the SW Area schools.
Office of Strategic Planning Staff (Ghassan)	Featherbed Lane Science Program	1/16/03	
Office of Strategic Planning Staff (Ghassan, Chris, Pam)	Visited Colonsville Elementary and met with principal Catherine Amiel	1/22/03 9:00 a.m.	The purpose was to view first-hand the use of the available space at the school and to determine if the school could help to ease the overcrowding at Edmondson Heights. Facility was determined to be more crowded than the current capacity and enrollment indicate. Capacity adjustment needed.
Office of Strategic Planning Staff (Ghassan, Chris, Pam)	Visited Wairowe Elementary and met with principal Renora DeShade	1/22/03 10:00 a.m.	The purpose was to view first-hand the use of the available space at the school and to determine if the school could help to ease the overcrowding at Edmondson Heights.
Office of Strategic Planning Staff and Dr. Milbourne	Met to discuss the Featherbed Lane Primary/Intermediate School study	2/3/03 10:00 a.m.	The purpose was to review the Featherbed Lane Primary/Intermediate School Study.
Office of Strategic Planning Staff and Executive Directors of Schools, SW Area, and Office of Strategic Planning Staff and Dr. Milbourne	Met to review Office of Strategic Planning recommendations for relief of overcrowding in all administrative areas	2/4/03 2:00 p.m.	The purpose was to share with all of the Executive Directors the strategies proposed by the Office of Strategic Planning to relieve overcrowding and address other facility concerns in all areas.
Office of Strategic Planning Staff and Dr. Milbourne	Met to discuss the Featherbed Lane Primary/Intermediate School study and Recommendations	2/5/03 2:00 p.m.	The purpose was to continue the dialogue related to addressing Featherbed Lane Primary/Intermediate School needs.
Office of Strategic Planning Staff and Dr. Milbourne	Met to discuss the Featherbed Lane Primary/Intermediate School study and Recommendations	2/20/03 4:00 p.m.	The purpose was to continue the dialogue related to addressing Featherbed Lane Primary/Intermediate School needs.

### SW Area Recommendations Meeting Timeline

## Questions and Answers

- Dogwood ES / Winfield ES
- Edmondson Heights ES / Westowne ES
- Featherbed Lane ES



## EDUCATIONAL PLAN FOR FEATHERBED LANE ELEMENTARY SCHOOL

The following is a synopsis of the administrative plan for Featherbed Lane Elementary School for the 2003/2004 school year. The Baltimore County Public Schools are proud to partner with the University of Maryland, Baltimore County and the National Science Foundation to implement an innovative project at Featherbed Lane Elementary that is based on research-based best practices for improving student achievement and teacher quality. The implementation of this engaging and exciting program requires some reconsideration of the current school educational plan.

### **National Science Foundation Grant and UMBC Partnership**

- In February 2003, the Baltimore County Public Schools announced its award of a National Science Foundation Grant to enhance the system's capacity to provide all students with challenging math and science curricula in order to increase student achievement and eliminate achievement gaps. The grant project will also increase the number, quality, and diversity of Pre-Kindergarten through 12<sup>th</sup> grade math and science teachers. To achieve these goals, the project will create **Science, Technology, Engineering, and Math (STEM) Academy Schools** in the following schools: Hebbville Elementary, Dogwood Elementary, Featherbed Lane Elementary, Southwest Academy Middle, Woodlawn Middle, and Woodlawn High, where all science, technology, engineering, and math (STEM) educators in the Academy Schools will receive high-quality professional development. In addition, UMBC interns will be placed in these buildings and will participate in a high quality teacher training program to become certified teachers after one year.
- This project will expand the UMBC **Urban Teacher Education Principal, Teacher, and Intern Scholarships** to recruit and retain the most talented science, technology, engineering, and mathematics (STEM) educators. Upon completion of the program and certification requirements, UMBC interns agree to spend three years teaching in a high-need Baltimore County public school, in order to stabilize the teaching forces at the BCPS science, technology, engineering, and mathematics (STEM) Academy Schools, provide exemplary teachers for other BCPS high-need schools, and increase student achievement.
- An additional component of the National Science Foundation grant provides year-round accelerated academic and extracurricular services to students from targeted schools. The **School To University Program** provides for exposure of students to a college environment with the intent of establishing a knowledge, excitement, familiarity, desire, planning, and expectation for higher education.



## Academic Program

▪ Baltimore County Public Schools' (BCPS) **Pre-Kindergarten and Kindergarten Programs** provide the foundation of a solid educational and experiential base for the system's youngest students. The Early Childhood Program is aligned with the Maryland Content Standards and Learning Outcomes. The core instructional components include:

**Language and Literacy**  
**Social Studies**  
**Physical Development**

**Mathematics**  
**The Arts**  
**Personal and Social Development**

**Science**

The comprehensive **Kindergarten Language Arts Program** includes modeled, shared, guided, and independent reading and writing experiences. It is recommended that 150 minutes of the full - day kindergarten program be devoted to language arts instruction.

The Baltimore County Public Schools' **Pre-Kindergarten Mathematics Program** uses literature and hands-on activities to explore mathematical concepts and skills. The **Kindergarten Mathematics Program** includes engaging experiences for young children as they are introduced to beginning mathematics concepts in number relationships, patterns, computation, geometry, measurement, statistics, and probability. This curriculum is aligned with the 2000 Maryland Learning Outcomes and Learning Goals.

### Core materials include:

McGraw Hill: *Mathematics Pre-K*

*The Newbridge Early Math Program*

*The BCPS Kindergarten Mathematics Guide*

*The BCPS Math Resource Guide K-5*

Open Court *Phonemic Awareness and Phonics Kits*

Great Source Education Group: *Everyday Counts*

▪ Baltimore County Public Schools' **Language Arts Program** is contained in the (BCPS) **Framework for Literacy Instruction**. This document incorporates research-based instructional practices that align with the Maryland Content Standards and Learning Outcomes. Each grade level has BCPS curriculum guides and documents to support instructional planning. Students in grades one through three receive a minimum of 150 minutes of daily language arts instruction and students in grades four and five receive a minimum of 120 minutes of daily language arts instruction. The following are the core components of the BCPS Language Arts Instructional Program in grades one through five:

**Phonemic Awareness, Phonics and Spelling**  
**Vocabulary/Word Study/Spelling**  
**Written Language**

**Fluency**  
**Text Comprehension**

### Core materials include:

SRA/Open Court *Phonics Kit*

Houghton Mifflin: *A Legacy of Literacy*



## Academic Program, continued

- The goal of the **Elementary Mathematics Program** is to teach students to become proficient in the content areas of number relationships, computation, geometry, measurement, statistics, probability, and algebra and patterns. The Baltimore County Public Schools' Elementary Mathematics curriculum is aligned to the Maryland Learning Outcomes and Learning Goals. It is recommended that 60 minutes of instruction be provided for grades 1 – 5.

Featherbed Lane Elementary's participation in the NSF grant will allow exciting opportunities for increasing teacher knowledge and student achievement in mathematics. It will further create the opportunity for highly qualified teachers to deliver effective, rigorous instruction with high expectations for the achievement of all students.

### Core materials include:

*BCPS Elementary Mathematics Guide*

McGraw Hill: *Math in My World*

*BCPS Math Resource Guide K-5*

*BCPS Elementary Mathematics Summative Assessments*

- The **Elementary Science Program** is designed to engage students in science experiences from Life Science, Earth/Space Science, and Physical Science that are appropriate to their cognitive stages of development. It provides opportunities for students to develop understandings and skills necessary to function productively as problem-solvers in a scientific and technological world. The science curriculum includes 30 minutes of instruction at the primary level and 45-50 minutes at the intermediate level.

### Core materials include:

*BCPS Science Curricula for Grades 1 - 5* include units on Observing Science, Exploring Science, Discovering Science, and Investigating Science

Harcourt Science Big Books, Grades 1 and 2

Harcourt Science Modular Texts, Grades 3 and 5

Houghton Mifflin Modular Texts, Grade 4

- **Social studies** content includes the study of geography, history, economics, civics, and cultures. Social studies instruction in grades one through five is outlined in the specific BCPS grade-level curriculum guides and is aligned to the Maryland Content Standards for Social Studies. A variety of field trips are tied directly to the core curriculum. Students are provided with 30 minutes of instruction at the primary level and 45-50 minutes at the intermediate level.

### Core materials include:

Harcourt *A Child's Place* (Grade 1)

Harcourt *Making a Difference* (Grade 2)

Harcourt *Communities* (Grade 3)

Houghton Mifflin *America Will Be* (Grades 4 and 5)



### **Academic Program, continued**

- The BCPS **Gifted and Talented Program** exists in all elementary schools. Components include:

- Primary Talent Development (K-2) PACE Language Arts modules (K-2)
- PACE Mathematics (Grades 1-3) GT Language Arts (Grades 3-5)
- GT Science and Social Studies (Grades 3-5) GT Math (Grades 4-5)

- **Art, Music, Physical Education, and Health** education is delivered to all students in grades 1 through 5. It is also part of the curricular program for full-day kindergarten. The programs are aligned with the Maryland Content Standards and Learning Outcomes.

### **Academic Program, General Recommendations**

- As plans are made for Featherbed Elementary to implement the opportunities provided by the NSF grant some general recommendations include:

#### **Scheduling**

- Focus all scheduling decisions on strategies that will maximize instructional time.
- Create a schedule that emphasizes uninterrupted reading, math and science instruction as a first priority.
- Identify blocks of grade level instructional time to facilitate regrouping of students for instruction.

#### **Professional Development**

- Create a yearlong professional development plan considering NSF opportunities, internal resources, as well as resources from the Division of Curriculum and Instruction.
- Create differentiated opportunities based on the experiences and needs of staff.

#### **Other considerations**

- Evaluate the instructional impact of all programs and make data based decisions about continuation/elimination of programs.
- Consider organizing the intermediate grades by departmentalization of subjects.
- Plan the most effective use of paraprofessionals.
- Consider the features of the physical plant (e.g. location and size of rest rooms) when planning to maximize instructional time.



### **Special Education Program**

- For 2003-2004, Featherbed Lane Elementary School will continue to house a non-categorical pre-school class with opportunities for inclusion in the general education pre-school class and in kindergarten.
- Special Education Programs for Featherbed Lane Elementary School (03-04) will include:
  - Inclusion (3.0 teachers and 2.0 instructional assistants to provide a continuum of services)
  - Non-categorical Pre-Kindergarten/Kindergarten (2 classes AM/PM) – 1.0 teacher and 1.0 instructional assistant
  - Primary Functional - 1 class (1.0 teacher and 1.0 instructional assistant)
- A functional class serving both Featherbed Lane Elementary and students from surrounding elementary schools will also remain in place. Presently more than fifty percent of the students functional class are from Featherbed Lane Elementary School. Three special education teachers at Featherbed will be designated to support the inclusion of students with disabilities into the least restrictive environment in order to provide flexibility in instructional delivery for students with IEPs. Whenever possible, students with IEP's will be in regular homerooms and in special subject classes and school activities with their general education classmates.

### **Physical Facility Improvements and Capital Planning Initiatives**

- To improve access to the school building, a parent drop-off loop will be constructed in the summer of 2003 to ease congested traffic along the main school entrance on Richardson Road. The loop will egress off of Woodlawn Drive through Woodlawn Memorial Park to the rear of the school. We expect this loop to greatly enhance traffic flow around the school, as well as provide better access for emergency vehicles should an urgent situation arise.
- The Office of Strategic Planning and the Office of Physical Facilities will continue to work with the Featherbed Lane Elementary leadership and PTA to develop workable site improvements, such as redesigned parking and improved walkways, and incorporate them into a phased site improvement plan. The projects within this plan may be implemented as funding and priorities allow within the Baltimore County Public Schools.



## **Administrative Structure**

- The circumstances that lead Featherbed Lane Elementary School to become Featherbed Lane Primary and Featherbed Lane Intermediate have changed substantially since implementation in 1997. During this time, these two schools functioned with two separate cooperative principals, each with their own staff and budget. The award of the National Science Foundation grant will require a unified leadership to guide staff and students to success. The school will return to its former name and administrative structure of Featherbed Lane Elementary School, a comprehensive elementary serving children from Pre-Kindergarten through Grade 5, under a single principal. This strength of leadership will allow Featherbed to build a program based on academic rigor and focused on student achievement.
- The combined Featherbed Primary and Intermediate projected enrollment is 731.5 FTE students.
- By formula this will produce 5.1 kindergarten teachers, 25.2 grade 1 - 5 teachers, 3.7 special area teachers (art, physical education, and vocal music), 2.0 reading teachers, and a 0.6 technology integration teacher.
- The combined school will be scheduled to have a 0.6 instrumental music teacher, three sessions of Pre-Kindergarten (1.5 teachers), 2.0 self-contained special education teachers, 3.0 special education inclusion teachers and 1.8 speech language pathologists.
- The combined school will also have 2.0 mentors, a 0.5 primary development resource teacher, 0.2 gifted and talented teacher, 1.0 math resource teacher, and 4.0 instructional assistants.
- All of the preceding positions are additive; that is, equal to the sum of the primary and intermediate schools.
- The following positions reflect the current basis of allocation for elementary schools and are not additive. There will be 1.0 of each of the following: librarian, guidance counselor, school nurse, assistant principal, and principal. There is currently 1.0 of each position in each school.
- There will be 3.0 clericals in the combined school. There are currently 2.0 clericals in each school.