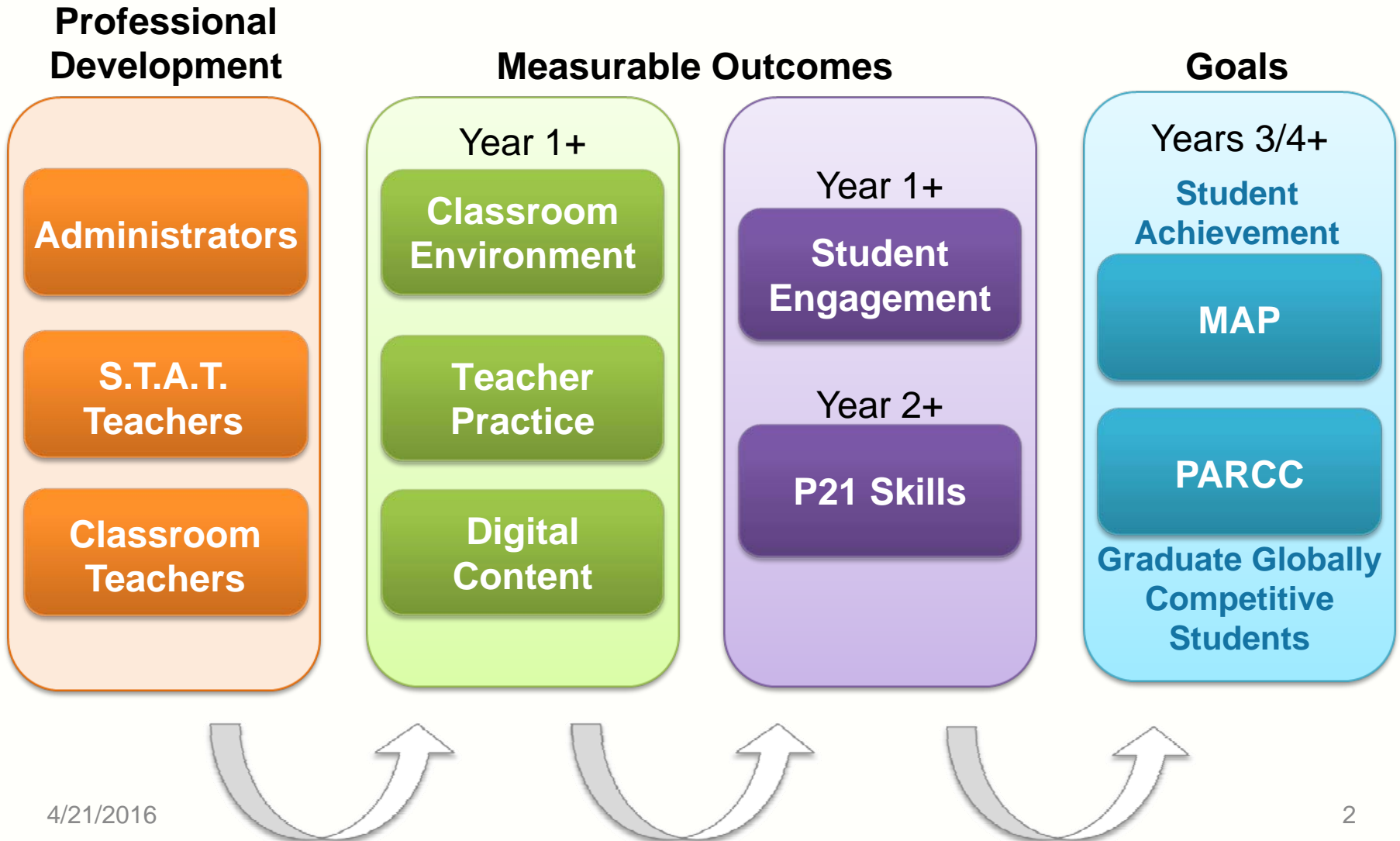


S.T.A.T. Year Two Mid-Year Evaluation

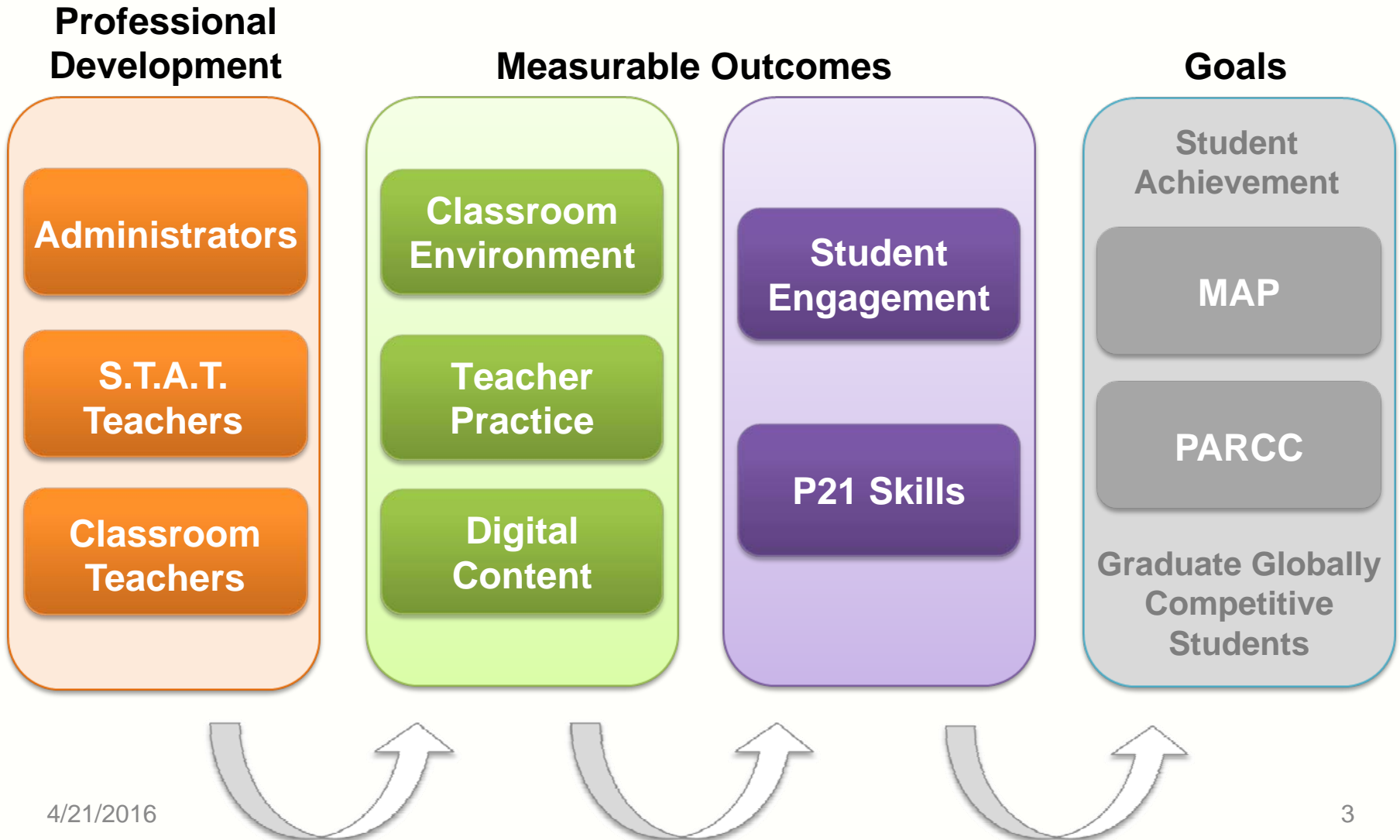
April 21, 2016

Dr. Steven M. Ross
Dr. Jennifer R. Morrison

S.T.A.T. Evaluation Model



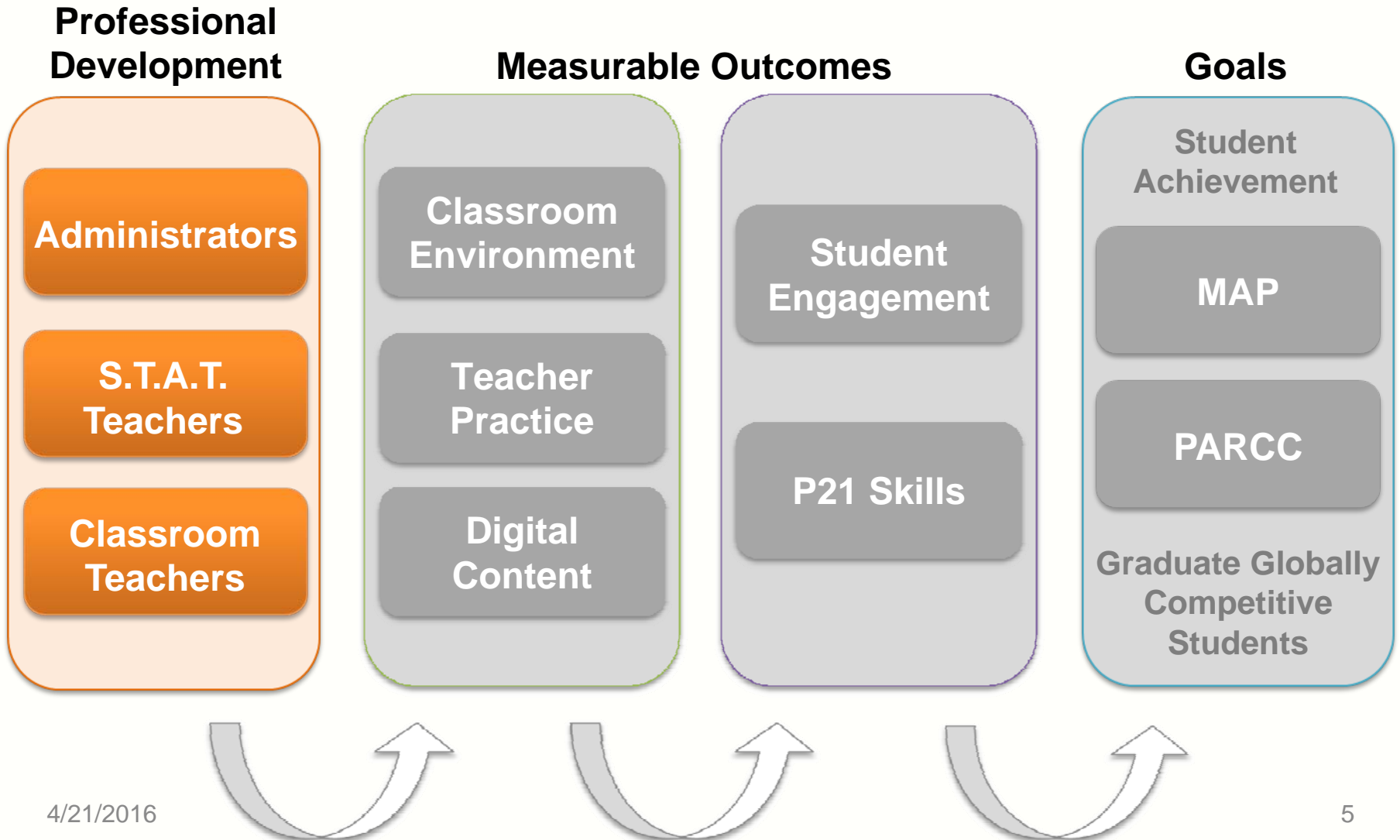
Mid-Year Report



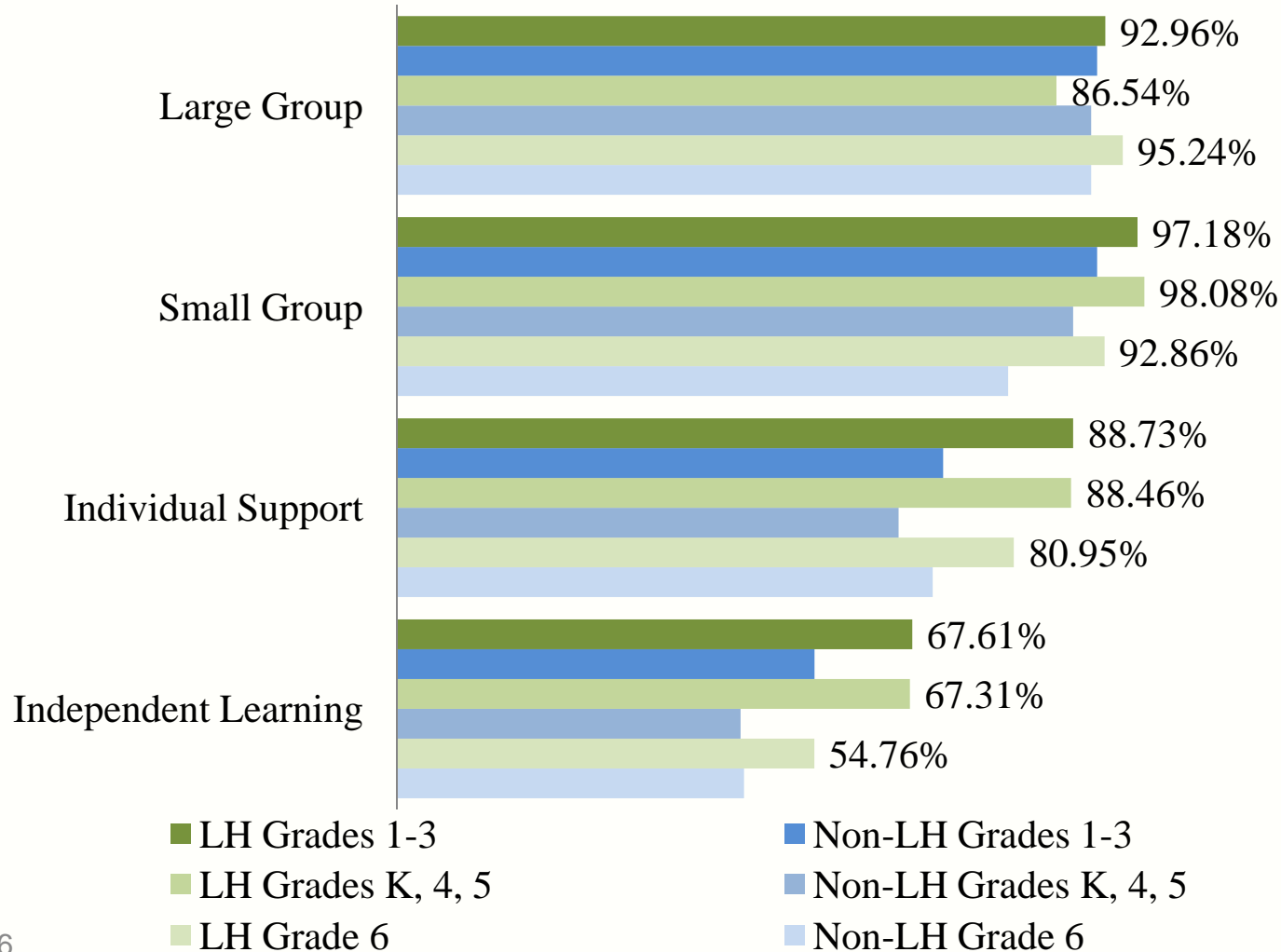
Data Sources

- Classroom observations in Lighthouse Elementary Schools (10), Phase 2 Elementary Schools (10), and Lighthouse Middle Schools (7) (OASIS-21 Instrument)
- S.T.A.T. Teacher Program Survey (BCPS survey)
- Digital content usage (BCPS One)

S.T.A.T. Evaluation Model



Survey: PD Participation

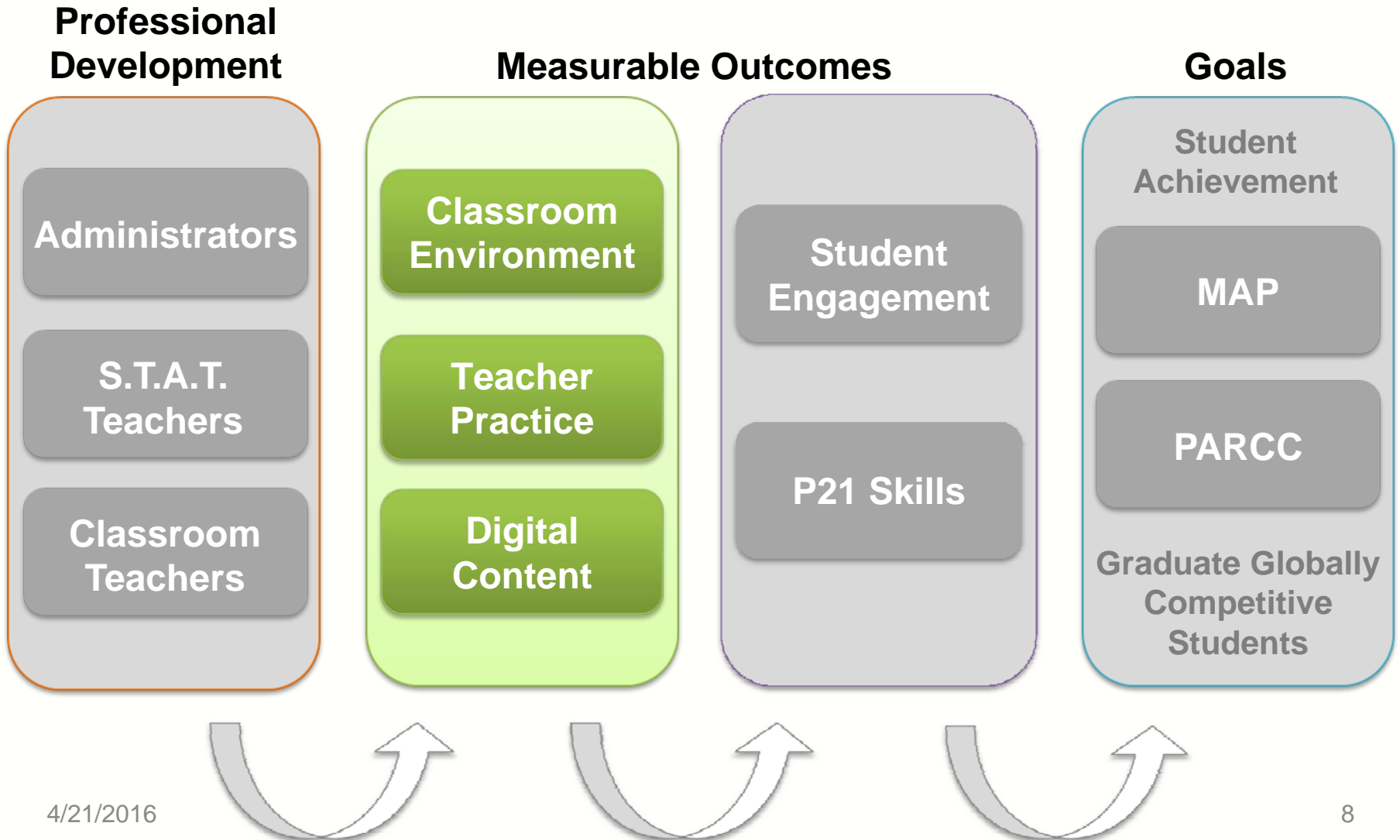


S.T.A.T. Teacher Program

The logo of the university is partially visible in the top right corner, featuring a shield with a globe and a building.

- Classroom teachers highly positive towards the S.T.A.T. teacher
 - Support offered
 - Professional development
- Clear definition S.T.A.T. teacher roles and responsibilities needed
- Increased time in schools

S.T.A.T. Evaluation Model



Observation Rating Scales

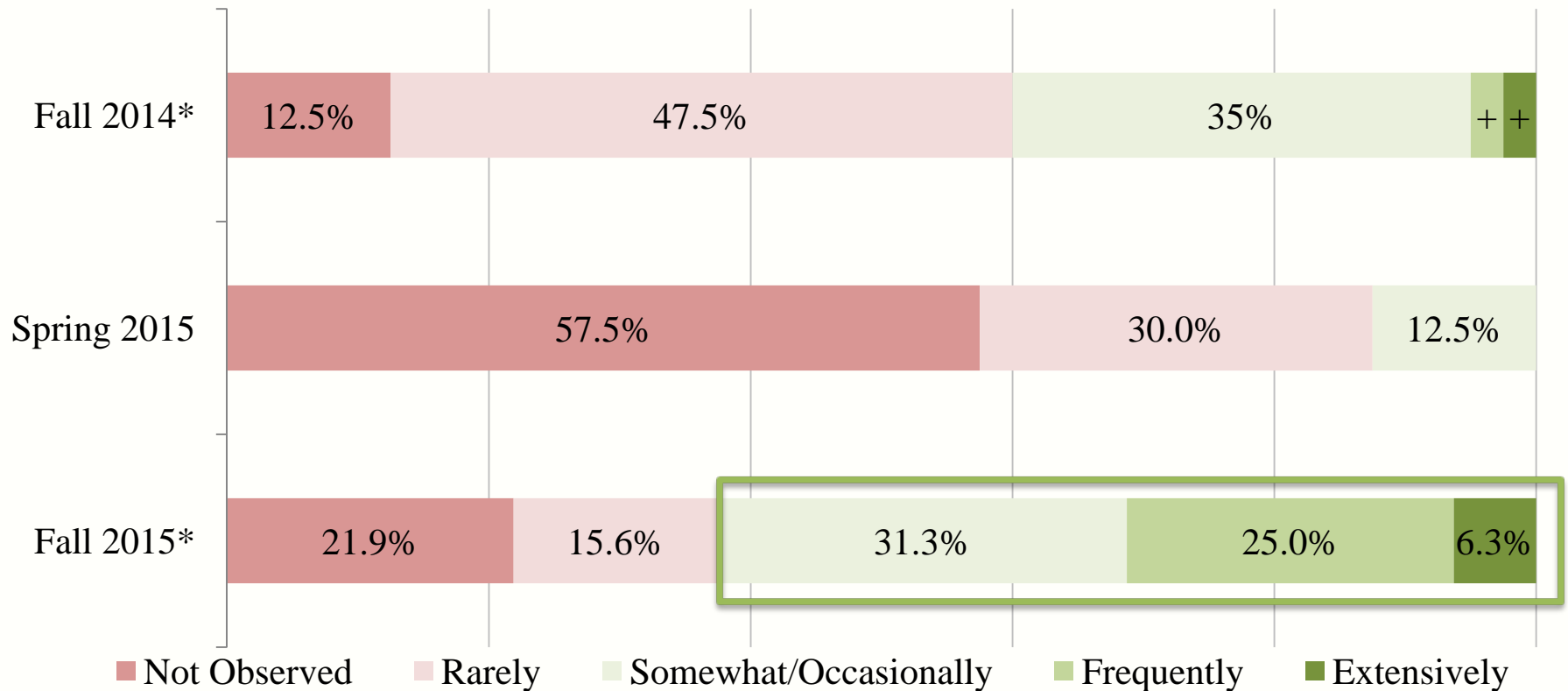
- Not observed: Not observed in class
- Rarely: Received little emphasis/time in class
- Somewhat/Occasionally: Receives modest emphasis/time in class
- Frequently: Receives substantial emphasis/time in class
- Extensive(ly): Highly prevalent in class

Impact on Classroom Environment

- Majority of classrooms reflected an environment consistent with S.T.A.T.
 - Display of information/resources
- Less frequent use of different workspaces, independent acquisition of materials and resources

Impact on Teacher Practices

Lighthouse elementary (Gr. 1-3): Communication is initiated by students



* $p < 0.17$

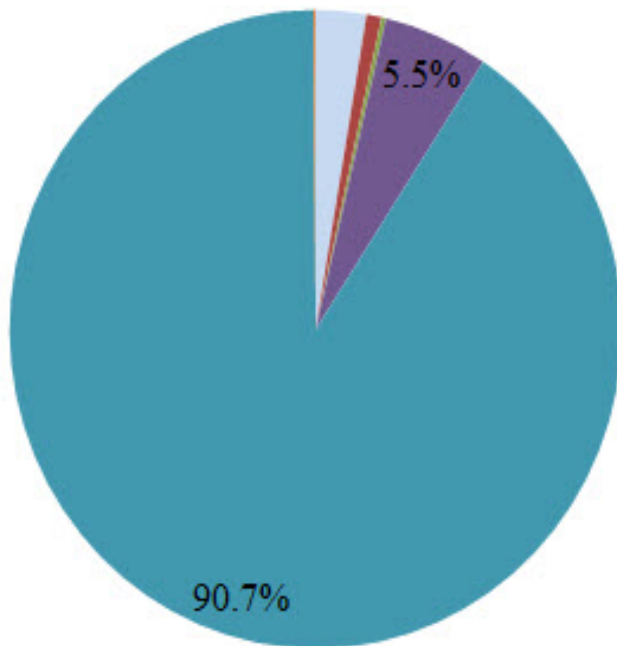
+ < 5%

4/21/2016

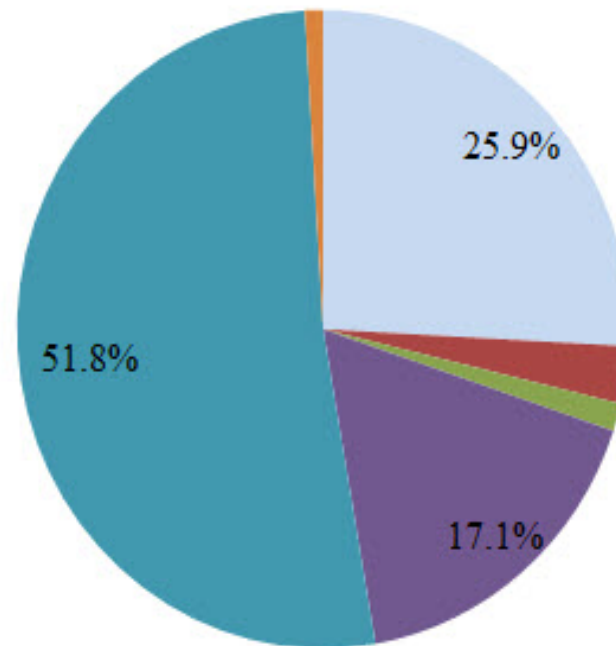
Digital Content Usage

S.T.A.T. Schools

Semester 1, 2014

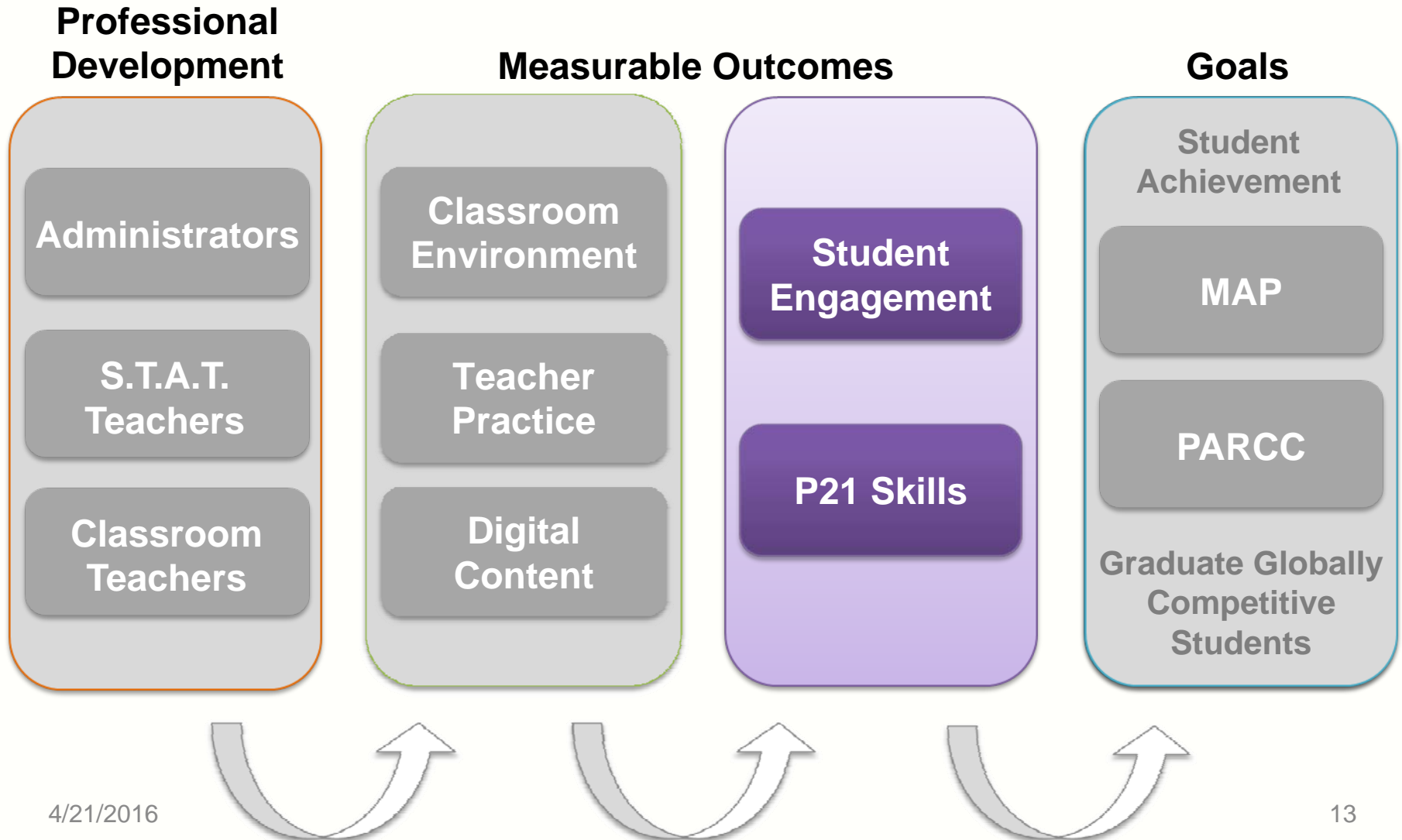


Semester 1, 2015



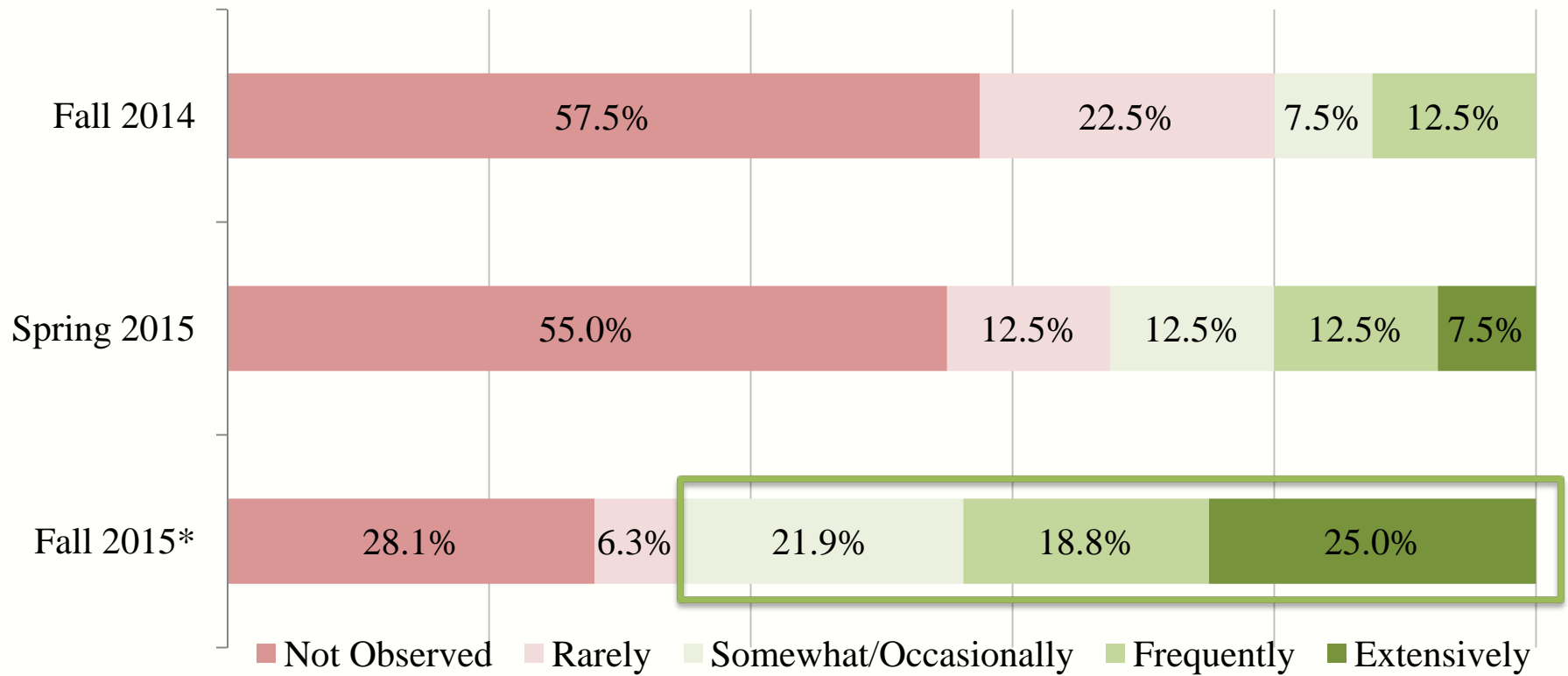
- Link tiles
- File tiles
- Assessment tiles
- Repository content tiles
- Assignment tiles
- Instruction tiles

S.T.A.T. Evaluation Model



Impact on Student Engagement

Lighthouse elementary Gr. 1-3: Collaborative learning



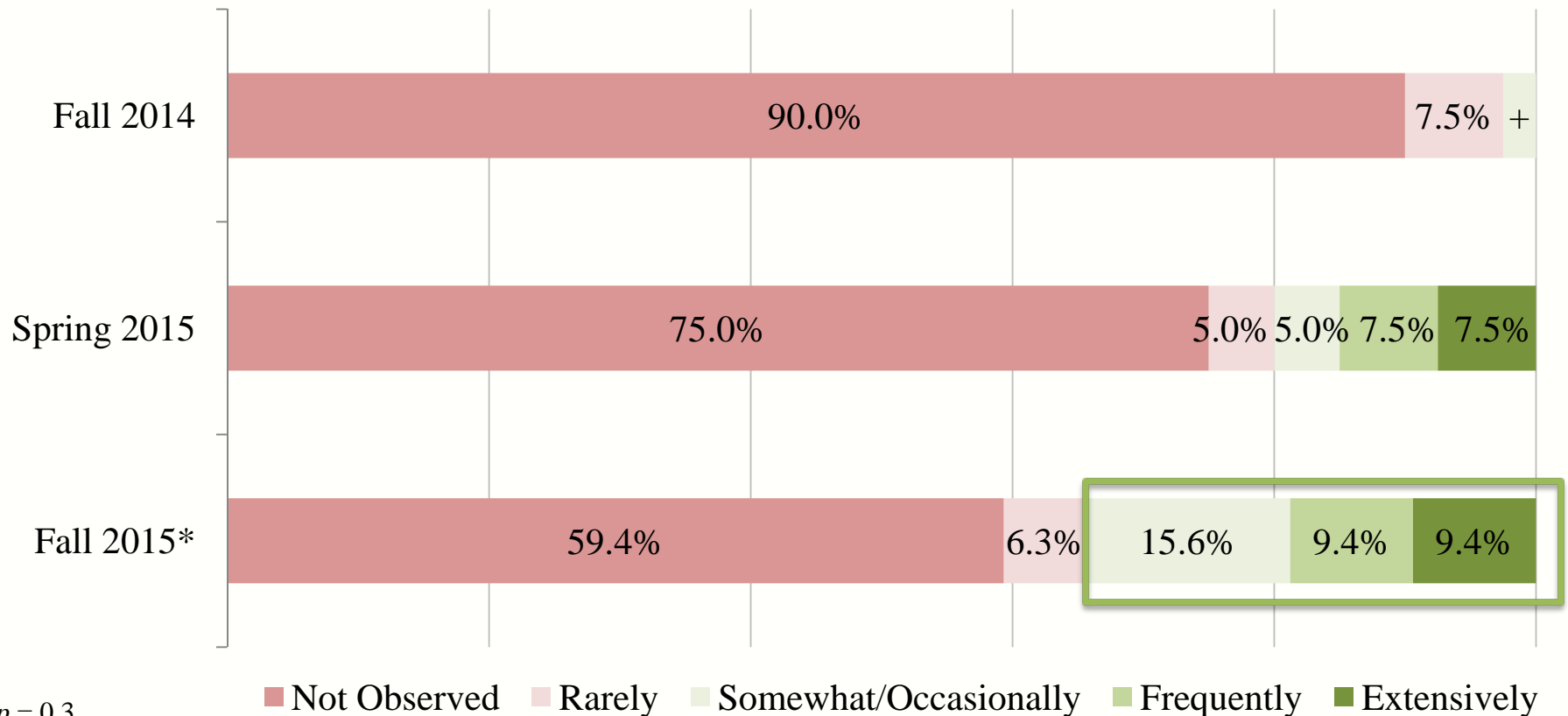
* $p < 0.17$

+ < 5%

4/21/2016

Impact on P21 Skills

Lighthouse elementary Grades 1-3: Problem solving



* $p = 0.3$

+ < 5%

4/21/2016

Recommendations



- Professional development
 - Desirable though less-practiced teaching and learning activities
- S.T.A.T. Teacher roles and responsibilities

Conclusion



- Impact of professional development on logic model components to various degrees
 - Notably on teacher practices
- S.T.A.T. Teacher Program is viewed by teachers as highly beneficial, valuable asset
- Observational data indicates growth across time for Grades 1-3 in Lighthouse and Phase 2 schools