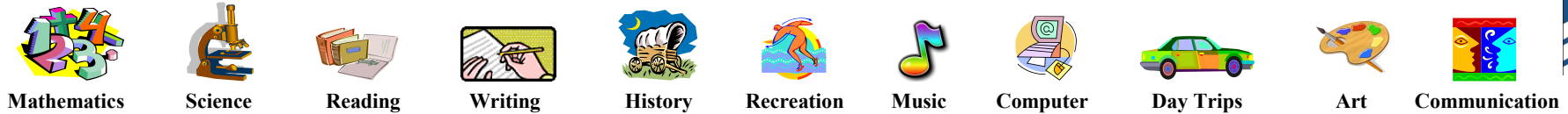


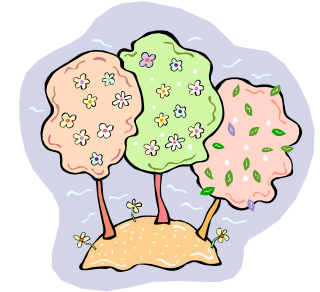
March 2011 Learning Calendar



P-Prekindergarten E-Elementary S-Secondary

Sunday	Monday	Tuesday	Wednesday	Thursday	Friday	Saturday
<p>The Maryland State Assessment (MSA) is coming... March 7 – 16 Grades 3 – 8</p>	<p>1 It's Nutrition Month. Talk to your family about food choices and menu planning. Visit www.mypyramid.gov for healthy eating tips. P, E, S</p>	<p>2 To celebrate National Youth Art Month, The Walters Art Museum will display 300 pieces by BCPS' students through Sunday, March 6. P, E, S</p>	<p>3 Create a healthy fruit juice treat. Mix two or more juices in one glass. Pick your favorite combination and make frozen fruit pops in the freezer. P, E, S</p>	<p>4 Dundalk Community Theater presents the classic courtroom drama <i>Twelve Angry Men</i> at CCBC through Sunday. 443.840.2787. E, S</p>	<p>5 Tap a tree for sap and then boil that sap into syrup for pancakes and waffles at Cromwell Valley Park from 10:30 a.m. – noon. Reservations required. 410.887.2503 P, E, S</p>	
<p>6 Explore summer options for kids at the Baltimore Area Camp Fair at the Crowne Plaza Timonium Hotel from noon – 3 p.m. P, E, S</p>	<p>7 Dutch painter Piet Mondrian was born in 1872. Many of his paintings feature straight lines and minimal use of colors. What are the primary colors? P, E, S</p>	<p>8 Count the change. Gather the coins from your pockets and have your child count them. Have older students figure out the change due after purchases. E, S</p>	<p>9 Maryland is home to the oldest continuously published newspaper in the United States. The Maryland Gazette was founded in 1727. Check it out! P, E, S</p>	<p>10 Maryland is called "The Old Line State" and "The Free State." What are the origins of these nicknames? What are our neighboring states called? E, S</p>	<p>11 In 1888 more than 45 inches of snow fell on the eastern region of the country, creating snowdrifts 15 feet high. How does that compare to this year's winter weather? E, S</p>	<p>12 The B&O Railroad Museum celebrates Women's History Month with an exhibit on women's contributions to the railroading industry. P, E, S</p>
<p>13 The Maryland Science Center's BodyLink offers visitors a high-tech chance to learn about health science and the human body. E, S</p>	<p>14 Why is today National Pi Day? (Hint: Think numbers, not apple cobbler.) E, S</p>	<p>15 The Ides of March is known as the day when Julius Caesar was killed in 44 B.C. What does the saying "Beware the Ides of March" mean today? E, S</p>	<p>16 Use measuring cups to determine recommended servings of food. Is there a difference between what you would normally eat and the suggested serving size? E, S</p>	<p>17 Saint Patrick's Day honors the patron saint of Ireland by celebrating Irish history, ancestry, traditions, and customs. How does your family celebrate its heritage? E, S</p>	<p>18 Create your own family trivia game. Make up questions about each family member and see who knows the most about family members. P, E, S</p>	<p>19 Celebrate Samson the elephant's 3rd birthday at the Maryland Zoo in Baltimore. Cakes for humans and elephants will be served. 11 a.m. P, E, S</p>
<p>20 How much do you know about Maryland? What is the state song? The state bird? Visit the Maryland Kids Page to find out; then take the Maryland quiz. E, S</p>	<p>21 Today is the first full day of Spring. What are the other three seasons of the year? How are they different from each other? How do seasons in other parts of the earth differ from ours? E, S</p>	<p>22 The Wham-O toy company first introduced hula hoops in 1958. But kids have been playing with large rings since ancient times. Make up a new game for a hoop. P, E, S</p>	<p>23 The motto on the Maryland state seal says "Fatti Maschii Parole Femine," meaning "strong deeds, gentle words." Create a family motto today. E, S</p>	<p>24 Magician Harry Houdini was born in Hungary in 1874. Learn a magic trick and practice with your child. E</p>	<p>25 Maryland Day commemorates the arrival of Lord Baltimore and the first colonists in Maryland in the 17th century. How was our state different when Lord Baltimore arrived? E, S</p>	<p>26 American playwright Tennessee Williams was born in Mississippi in 1911. Can you name some of his famous plays? E, S</p>
<p>27 The Baltimore Museum of Industry celebrates the city's working class history and recent renaissance. The collection includes an 1850s shipyard bell and an 1820s printing press. E, S</p>	<p>28 People blink an average of 4,200,000 times a year. How many times do we blink an hour? Why do we blink? E, S</p>	<p>29 Maryland's Chesapeake Bay is the largest inlet on the Atlantic Coast. How does the bay affect daily life and the economy in our state? E, S</p>	<p>30 Be a weather tracker: Write down the temperature each day for a week. How much does it change? What is the difference between Fahrenheit and Celsius? E, S</p>	<p>31 Look at a map or a globe together and plan an imaginary voyage. Where would you go if you could go anywhere? P, E, S</p>	<p>MSA – Parents can view sample testing and get other information about MSA. Follow the link: http://www.marylandpublicschools.org/MSDE/testing/msa/</p>	

TOPICS OF INTEREST



Cromwell Valley Park is a 380-acre stream valley park of cultivated gardens, open fields, woods, hedgerows, orchards, and wooded piedmont hills. It is open for visitation 365 days a year.

www.cromwellvalleypark.org

The **Baltimore & Ohio Railroad Museum** collects, preserves, and interprets artifacts related to early American railroading. This national historic landmark houses thousands of artifacts, fine art, uniforms, furniture, and a collection of scale models and toy trains.

www.borail.org

Popular exhibits and attractions at the **Maryland Science Center** include Dinosaur Mysteries, the Kids Room, Your Body: The Inside Story, the IMAX Theater, and the Davis Planetarium. www.mdsci.org

The Baltimore Museum of Industry is located in the historic Platt Oyster Cannery building in South Baltimore. The museum collects, preserves, and interprets for the public the industrial and technological heritage of the Baltimore region. www.thebmi.org

2002 Cromwell Bridge Road
Baltimore, MD 21234
410-887-2503

901 W. Pratt Street
Baltimore, MD 21223
410-752-2490

601 Light Street
Baltimore, MD 21230
410-685-5225

1415 Key Highway
Baltimore, MD 21230
410-727-4808